






Property Webb
At the HEART of your move

Dalyell Place, Armadale, EH48 2QB

Offers Over £150,000

 2  1  1



This spacious two double bedroom terraced home is located in the sought-after commuter town of Armadale. Throughout, the property boasts tasteful decor, ensuring a welcoming ambience from the moment you step inside. With ample storage solutions thoughtfully integrated throughout the home, you'll find convenience at every turn. The fully enclosed rear garden provides a private retreat, perfect for relaxing or entertaining outdoors.

This property presents an ideal opportunity for a first-time buyer, offering a perfect blend of comfort, functionality, and style. Don't miss out on the chance to make this house your home.

 01506 637553

 info@property-webb.co.uk

 www.property-webb.co.uk

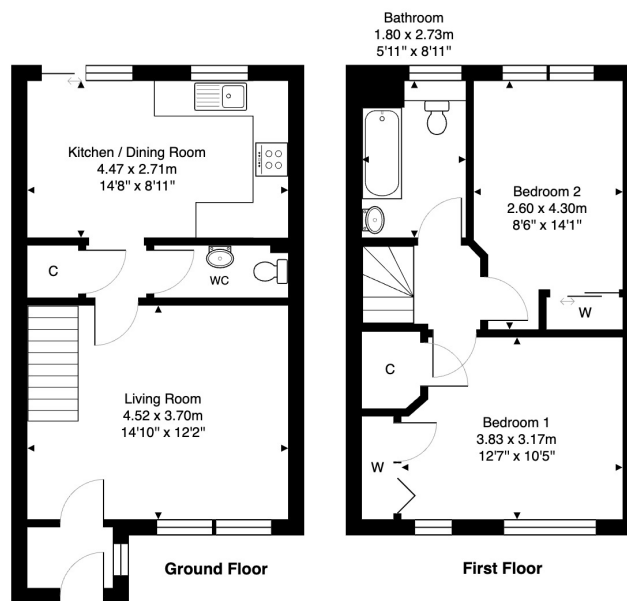
 71 South Bridge St, Bathgate, EH48 1TJ



Property Webb
At the HEART of your move

Key Features

- Delightful mid terraced property
- Move-in condition
- Good sized lounge
- 2 double bedrooms with fitted wardrobes
- Private rear garden
- Tastefully decorated throughout
- Entrance vestibule
- Modern kitchen/diner with access to rear garden
- Stylish family bathroom and downstairs WC
- Ample storage



40 Dalryell Place, Armadale, EH48 2QB

Total Area: 70.4 m² ... 758 ft²

All measurements are approximate and for display purposes only.



01506 637553

info@property-webb-co.uk

www.property-webb.co.uk

71 South Bridge St, Bathgate, EH48 1TJ