



Property Webb
At the HEART of your move

Beechwood Park, Uphall Station, Livingston, EH54 5QH

Offers Over £200,000

3 1 1



An impeccably maintained 3-bedroom semi-detached modern home presented in move-in ready condition. From the inviting lounge with a stylish feature wall to the modern kitchen with high gloss units, this home offers a blend of comfort and style. Further benefits are the fully enclosed private garden driveway for 2/3 cars, and a single garage, all in a sought-after location in Uphall Station. If you're looking for a home that's ready for you to move straight into, this is it!

Arrange a viewing today and make this stunning property your new home sweet home!

01506 637553

info@property-webb-co.uk

www.property-webb.co.uk

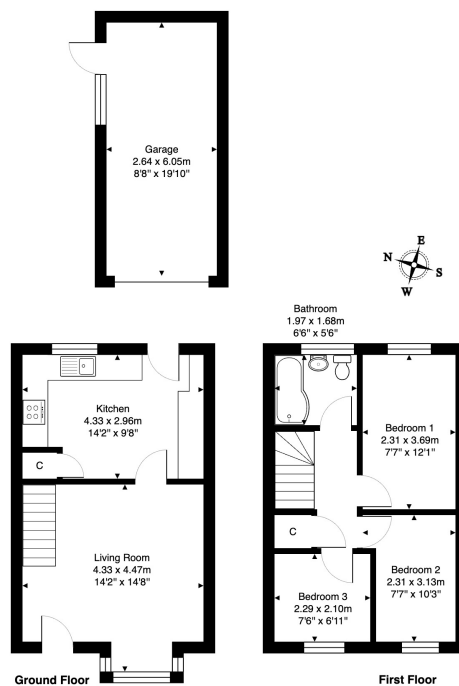
71 South Bridge St, Bathgate, EH48 1TJ



Property Webb
At the HEART of your move

Key Features

- Modern Semi-Detached House
- Move-In Condition
- Bright Stylish Lounge
- Fitted Kitchen/Diner
- 2 Double Bedrooms
- Large Single
- Contemporary Bathroom
- Fully Enclosed Garden
- Single Garage
- Walking Distance to Train Station



9 Beechwood Park, Uphall Station, EH54 5QH

Total Area: 60.4 m² ... 650 ft² (excluding garage)

All measurements are approximate and for display purposes only.

01506 637553

info@property-webb-co.uk

www.property-webb.co.uk

71 South Bridge St, Bathgate, EH48 1TJ