






Property Webb
At the HEART of your move

Mossend View, West Calder, EH55 8RZ

Offers Over £340,000

 4  2  1



Contemporary yet comfortable family living is assured in this four bedroom & two bathroom detached executive home, positioned within the exclusive Monarch's Way development.

The Canterbury' signature style, built by Walker Homes offers immaculate accommodation that is elevated by a fabulous rear garden boasting uninterrupted views, with a single garage and driveway. This presents a luxurious forever family home, in close proximity to excellent amenities.

 01506 637553

 info@property-webb.co.uk

 www.property-webb.co.uk

 71 South Bridge St, Bathgate, EH48 1TJ



Property Webb
At the HEART of your move

Key Features

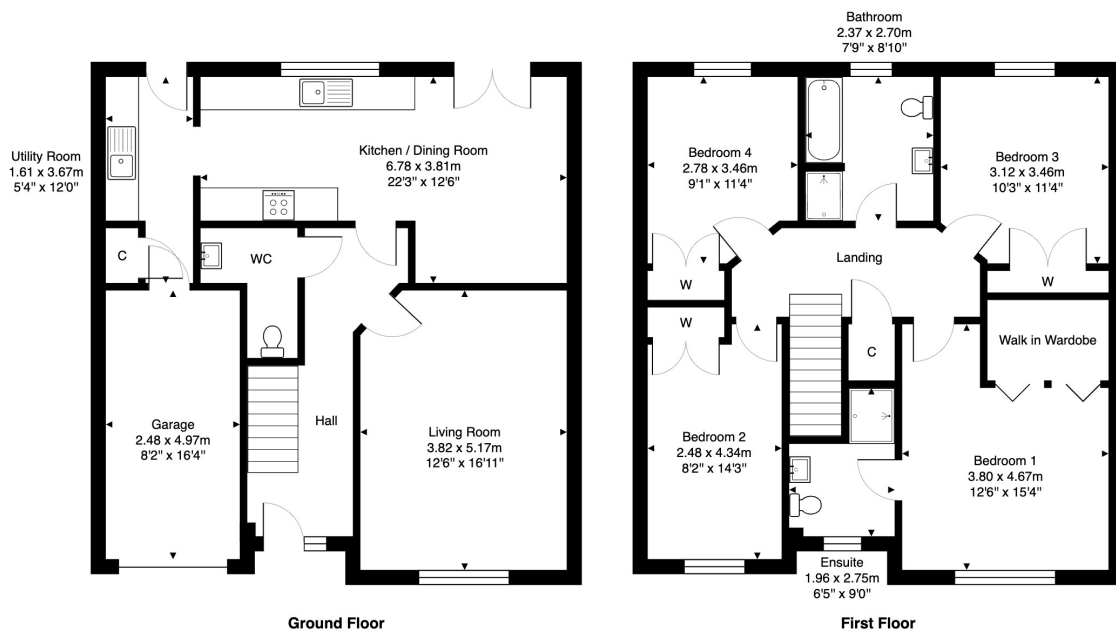
- Impressive Detached Family Home
- Exclusive Residential Development
- Bright and Spacious Lounge
- Stunning Kitchen/Dining Room with Integrated Appliances
- Utility Room and Guest WC
- Elegant Principal Bedroom and En-Suite
- Three Further Double Bedrooms with Fitted Wardrobes
- Modern Four Piece Family Bathroom
- Large Rear Garden with Patio Seating Area
- Driveway and Single Garage



26 Mossend View, West Calder, EH55 8RZ

Total Area: 151.9 m² ... 1635 ft²

All measurements are approximate and for display purposes only



01506 637553

info@property-webb-co.uk

www.property-webb.co.uk



71 South Bridge St, Bathgate, EH48 1TJ