



FreemanHomes

ENERGY-EFFICIENT
EPC A-RATED HOMES



OAKFIELDS

CREDENHILL, HEREFORDSHIRE



Customer Satisfaction 2025



By FreemanHomes





FreemanHomes

ENERGY-EFFICIENT
EPC A-RATED HOMES

WELCOME TO



OAKFIELDS

CREDENHILL, HEREFORDSHIRE

A unique collection of energy-efficient, low-carbon living properties in the Herefordshire village of Credenhill. Oakfields presents homes with attractive exteriors and spacious internal layouts, that feature a high specification to include renewable energy technologies from market-leading brands.

Enjoy the best of both worlds from an enviable position nestled at the foot of Credenhill, where oak trees frame iconic Herefordshire countryside views; yet these homes are a stone's throw from the vibrant Cathedral City centre of Hereford.

FreemanHomes

ASPIRATIONAL HOMES, DESIRABLE LOCATIONS

MORE SPACE, MORE STYLE & UNBEATABLE SPECIFICATION

Each property at Oakfields has been thoughtfully designed with your comfort, convenience and enjoyment in mind. We have partnered with leading architects to curate a development that brings together a choice of flexible property layouts and generous outdoor areas, ensuring there is no shortage of space inside or out. A superior specification presents luxury features, appliances and technologies, chosen to create modern homes that achieve A-rated energy assessments without compromising on design or style.

At Oakfields, we have positioned the properties to make the most of the surrounding countryside and drawn inspiration from local architecture to design homes that complement the area's existing style and aesthetic.

For those who reserve early, we offer the opportunity to further personalise your new home, from kitchen cabinets and flooring finishes to additional security and sustainable features.

Our Freeman Choice range of options will help you make your new property feel like home before you've unpacked the first box.

Talk to our friendly team and learn more about the properties and surrounding area.

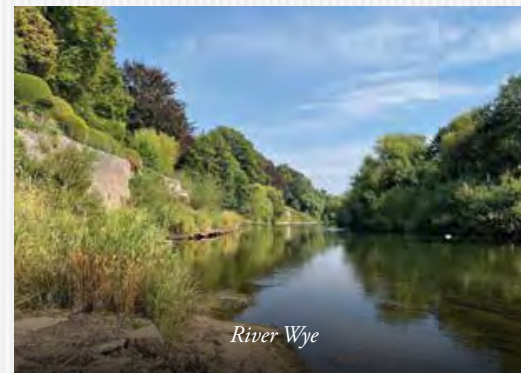
We look forward to meeting you.

Luke Freeman

Founder of Freeman Homes and Group CEO



Open countryside views around Credenhill



River Wye



Woodland walks

Herefordshire countryside views

FreemanHomes

SAY HELLO TO
RIVERSIDE WALKS AND LOCAL
NATIONAL TRUST SITES

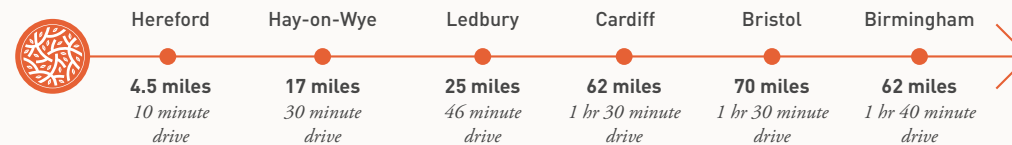
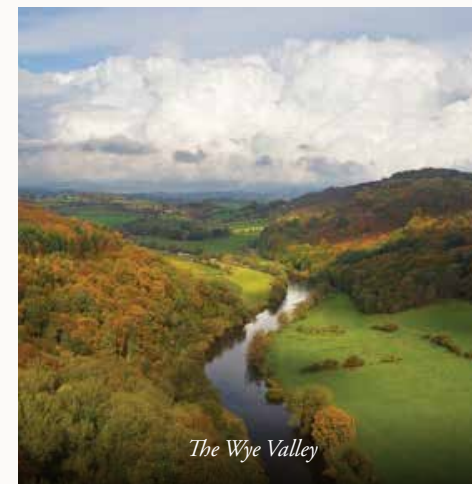


OAKFIELDS

The Weir Garden, National Trust, near Credenhill

OAKFIELDS | 2

A WELL-CONNECTED COMMUNITY



Distances and times are approximate

WHAT'S NEARBY

Eat & Drink

Herefordshire is famed for its local produce and boasts a vibrant foodie scene to feast within. Locally brewed ales, ciders, and cocktails mixed with tipples from local distilleries can be found in most eateries. Credenhill is only a short distance from the centre of Hereford City, where some of our favourite places include The Bookshop and their famous steak-led menu; award-winning burgers at The Beefy Boys and The Burger Shop; Instagram worthy brunches and lunches at Sensory & Rye and Rocket; and coffee and homemade cake next to the river at De Koffie Pot. You will also find the surrounding area and neighbouring villages are peppered with notable country pubs, restaurants and cafés.

Shopping

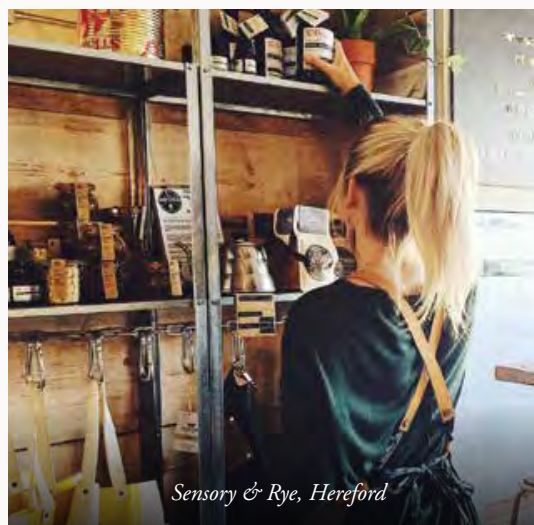
Hereford offers a mix of popular high street brands and an ever-growing number of independent shops across the town. Explore cobbled streets for hidden gems, or head to the Old Hereford Market where you will find everything in one place, including a Waitrose supermarket and Odeon cinema. There are multiple supermarkets to choose from and a Marks & Spencer Foodhall can be found in the centre of town. Whether you've got green fingers or are looking for some garden inspiration and advice, Hereford Garden Centre is just a mile down the road from Oakfields, where it also houses a café restaurant and pet shop.



The Hereford, Bar and Brasserie at The Green Dragon Hotel



Hereford Old Market



Sensory & Rye, Hereford



Hereford



Arts & Culture

Museums and attractions are abundant in Herefordshire. The Courtyard in Hereford is a centre for the arts and stages touring shows and in-house productions; Hereford Cathedral hosts notable events and exhibitions and is home of the Mappa Mundi and the Chained Library; whilst The Museum of Cider tells the tale of apples in Herefordshire. The county is also home to an impressive range of seasonal festivals and events to be enjoyed by all the family.



Hereford Cathedral, exhibitions

Health & Wellbeing

In addition to the sprawling countryside scenery, you can enjoy all manner of indoor activity. The region is well served with leisure centres, gyms and indoor activities that are never too far away. Dive into a pool at Herefordshire Leisure Centre; sign up to a beginner's climbing or bouldering course at Green Spider Climbing Centre; or treat yourself to a spa treatment at Holmer Park Health Club & Spa.

Get Outdoors

From Oakfields you can explore parish trails and the rich history of the area on foot. There is a public footpath running through the fields directly behind Oakfields where you can enjoy expansive Herefordshire views. The nearby Credenhill Park Wood is managed by the Woodland Trust and is steeped in history with a past as a Roman army depot, medieval deer park and the site of an Iron Age tribal centre. It features a range of paths, views of the Black Mountains and stunning woodland flowers; this special wildlife site is brimming with a wide range of woodland animals. You can also find geocaches in the woods to keep little ones entertained. Less than 2 miles away, The National Trust Weir Garden is a peaceful place to enjoy the picturesque River Wye, where seventy species of bird have been spotted as well as the odd otter sighting.

Education

Credenhill is home to St Mary's C of E Primary School which continues to hold a good rating. The village also sits within the catchment area of numerous high-performing high schools to include the Ofsted Outstanding St Mary's RC High School in Hereford, and Hereford Cathedral School which is an outstanding independent school for nursery to sixth form age.



Open countryside walks throughout Herefordshire



Credenhill Park, Managed by the Woodland Trust



National Trust, Weir Garden

FreemanHomes

SAY HELLO TO
A BRIGHT AND SPACIOUS HOME



OAKFIELDS

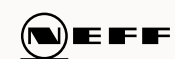
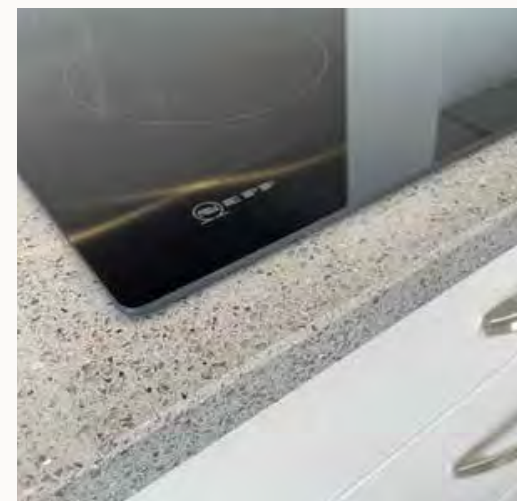
OUR SIGNATURE SPECIFICATION

Let your personality shine through in your new home with the Freeman Choice of options and upgrades. We will talk you through the items available and offer more detailed information to assist with decision making, helping you to personalise your home.

The homes at Oakfields feature the Freeman Homes' signature specification, combining meticulous attention to detail with premium branded appliances, technologies and products.

Kitchen

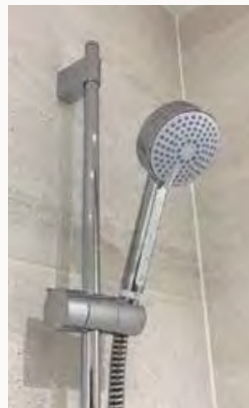
- Beautifully designed, fully fitted Symphony kitchen
- Soft close doors and drawer units with integrated cutlery tray
- Choice of worktops with matching upstand (subject to build stage)
- NEFF integrated single oven
- Integrated dishwasher
- Integrated 70/30 fridge freezer
- NEFF ceramic hob, stainless steel splashback and cooker hood
- Utility room with space for one or two appliances (as design dictates)



Symphony®

Bathroom, En suite and Cloakroom

- White Villeroy and Boch sanitaryware
- Hansgrohe chrome fittings
- Mira Evoco shower with low profile shower tray to bathrooms and en suites
- Underfloor heating to bathrooms and en suites
- Classic straight towel rail in chrome to bathrooms and en suites
- Shaver socket to bathrooms and en suites
- Porcelanosa half-height tiles with full-height wall tiles to shower enclosure and bath




Villeroy & Boch
1748

hansgrohe

mira
SHOWERS

PORCELANOSA

Finishes

- Natural wool mix carpet, carpet to stairs, landing, bedrooms, hall and living room
- Hard flooring to kitchen
- Fitted wardrobes with sliding doors to bedrooms (as design dictates)
- Natural stained ash handrail
- Internal walls and ceilings finished in Crown White
- Internal woodwork finished in Crown Brilliant White
- Silver-grey foil wrapped uPVC windows, patio, utility, and garage personnel doors
- Bowater Maple natural grained front door with clear glass
- Glazed sliding doors or French patio doors leading to patio and garden
- Oak Veneer Prefinished doors on 4 and 5 bed house types, upgrade available on 2 & 3 bed house types

Safety and Security

- External multi-point locking door with thumb lock
- Window locks
- In-door viewer with security chain

Energy-efficient Heating, Lighting & Electrical

- Viridian roof integrated Solar PV panels (option available for battery storage - 5.0 kWh)
- NIBE Air Source Heat Pump
- Project EV 7.3kW electric car charging point
- Underfloor heating and/or Stelrad Compact radiators (as design dictates)
- Low energy downlights and pendant lighting (as design dictates)
- Ample sockets throughout, including BT point in living room
- TV points to kitchen, living room and all bedrooms
- USB charging port sockets to kitchen and master bedroom
- Satin chrome push door bell
- Pendant light to loft



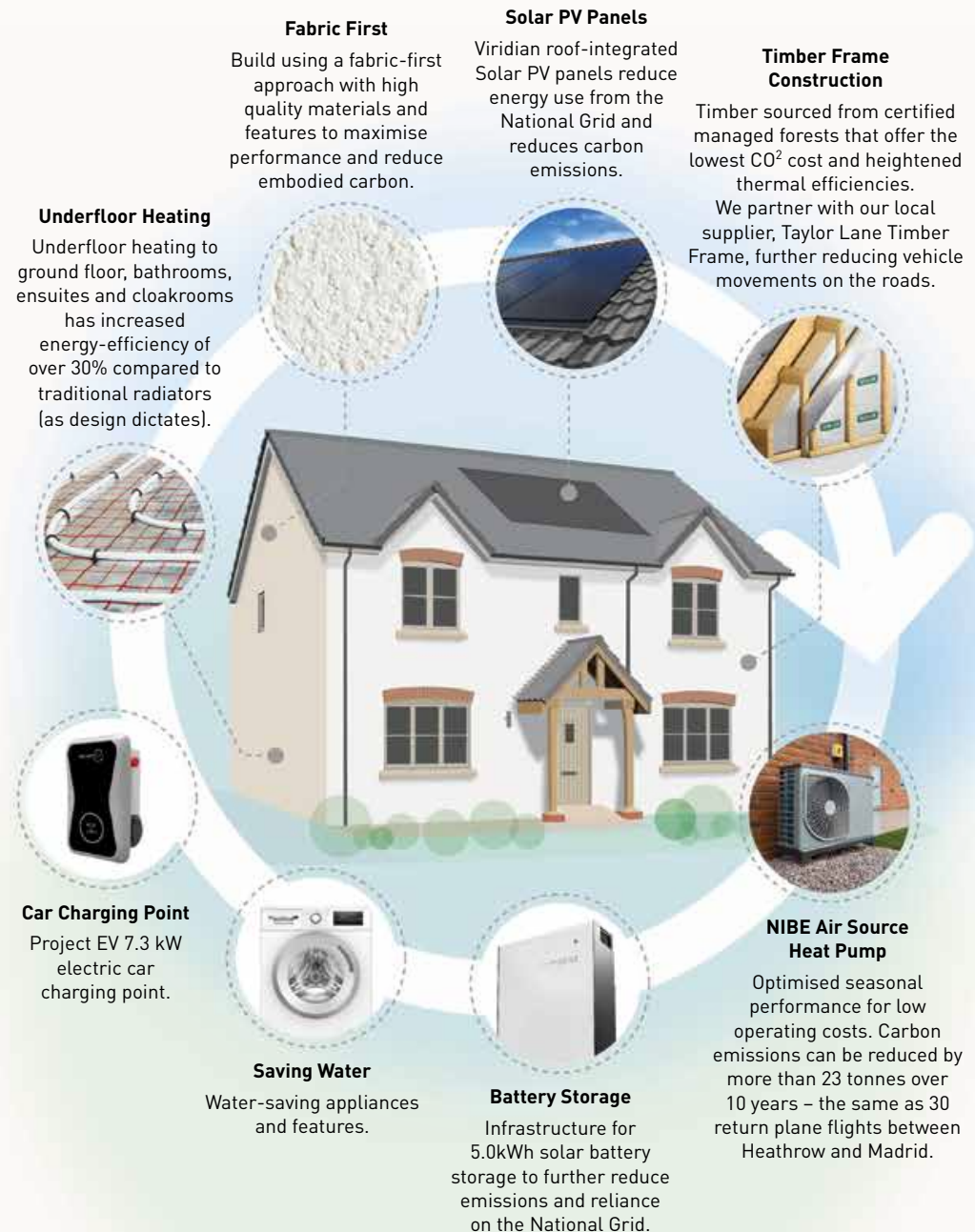
EPC A-RATED HOMES

Zero carbon living, sustainable features

Our approach to sustainability is about carefully considering the future and ensuring that we build communities that create a positive impact. We adopt a fabric-first approach to design, partnering with market-leading renewable technology brands to maximise energy performance, reduce carbon emissions, and lower embodied carbon. The result is an EPC A-rated property with significantly lower running costs.



SUSTAINABLE LIVING AT OAKFIELDS



Environmental Details



Development predicted to achieve A-rated energy assessment

Market leading renewable energy technologies

- Hedgehog-friendly fencing allows hedgehogs to roam freely in search of food and mates
- Hedgehog houses within the shared open areas provide shelter and somewhere to nest
- Bird boxes provide a home for nesting birds, and bat boxes provide a place for bats to roost
- Bee bricks for nesting solitary bees
- Significant ecology landscape planting
- Dual flush mechanism to toilets to reduce water use
- Double-glazed windows providing a high level of thermal insulation and reduced heat loss
- High levels of insulation within roof spaces and external wall cavities, to limit heat loss in the winter and reduce heat gain in the summer
- Significant recycling of waste materials and packaging during the construction of each home
- Rainwater butt and garden composting bin

Garden & Garage

- Lighting and double power socket to garage
- Up and over garage door
- External tap
- Landscaping to front garden and turf to back garden
- External, low-level, wildlife-friendly lights to front and back of property
- Patio to rear garden



Stay connected at home

With fast broadband, everyone in the house can be online, keeping in touch with friends and family, working from home, watching Netflix, and doing the weekly shop, all at the same time.

Credenhill benefits from fibre enabled broadband. The village also falls under Fastershire, which is a partnership between Herefordshire Council and Gloucestershire County Council, that is bringing even faster broadband to the two counties. This means you can upgrade to ultrafast fibre through your provider and access broadband speeds of up to 1,000Mbps. For more information visit www.fastershire.com.

Space to work from home

Whether it's a downstairs study, upstairs study, spare room converted into a home office, or a dedicated corner of a spacious open plan layout, we have a wide range of designs to suit your work from home style. Better still, inspire productivity and put your own stamp on your work-friendly space.



OAKFIELDS

HOUSE TYPE

4 BEDROOM



THE YEAT

164.6 sqm - 1,772 sqft

PAGE 15

3 BEDROOM



THE HARDY

102.8 sqm - 1,107 sqft

PAGE 19



THE POTTER

92.6 sqm - 996 sqft

PAGE 21



THE KEATS

91.3 sqm - 983 sqft

PAGE 25

2 BEDROOM



THE TENNYSON

81 sqm - 874 sqft

PAGE 27



THE MILNE

77 sqm - 829 sqft

PAGE 29

OAKFIELDS

SITE MAP



Get in touch with our friendly team today
and schedule your viewing.

01594 543354

credenhill@freemanhomes.co.uk
www.freemanhomes.co.uk

These particulars are set out as a general outline for guidance only.
The information in this brochure does not in any way form part of a contract or warranty.
Details may be subject to change.

SHOW
HOME



PLOT AVAILABILITY

Please call our friendly
sales team or visit
www.freemanhomes.co.uk



SOLD PLOTS

THE YEAT

4 BEDROOM 164.6 sqm / 1,772 sqft

SPECIFICATION OVERVIEW

- Large, detached four-bedroom property
- Low-carbon, energy-efficient home, predicted to achieve an A-rated energy assessment
- Light, airy and spacious kitchen with NEFF appliances
- Kitchen island
- Separate dining room
- Utility room with external door
- Spacious living room with French doors to patio
- Family bathroom
- En suite shower room to bedrooms 1 and 2
- Fitted wardrobes with sliding doors to bedrooms 1, 2 & 3
- Walk-through wardrobe to master bedroom
- Sleek roof-integrated Solar PV panels and market leading NIBE Air Source Heat Pump
- Double garage with private parking
- Electric car charging point

THE YEAT KEY FEATURES



4 BEDROOMS



TRADITIONAL
LAYOUT



FAMILY
BATHROOM



2
EN SUITES



FITTED
WARDROBES



UTILITY



HOME
WORKING



DOUBLE
GARAGE



ENERGY
EFFICIENT



LOW
CARBON



VIEWS



59 67 Weathered red brick

PLOTS

60 67

All measurements are approximate and may vary on site. CGIs are of a similar property previously built. Floor plans are indicative only and are subject to change.






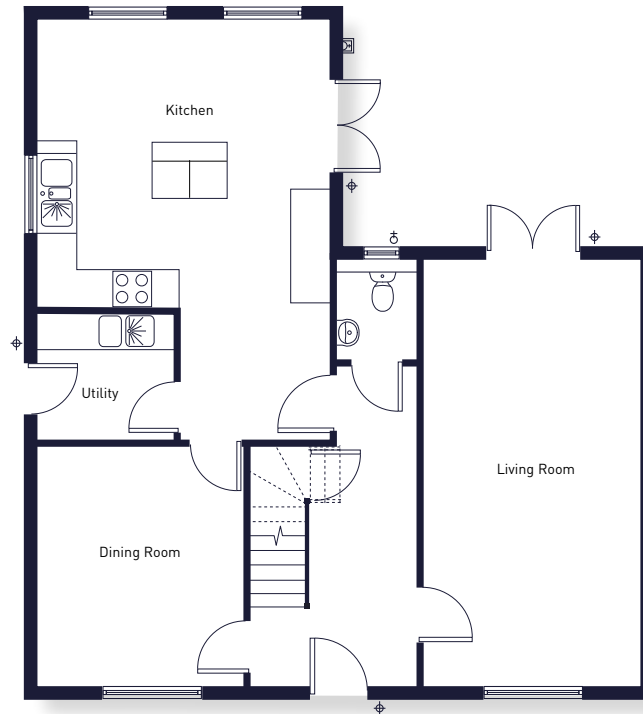
THE YEAT 60 Painted brick

All measurements are approximate and may vary on site. CGIs are of a similar property previously built. Floor plans are indicative only and are subject to change.

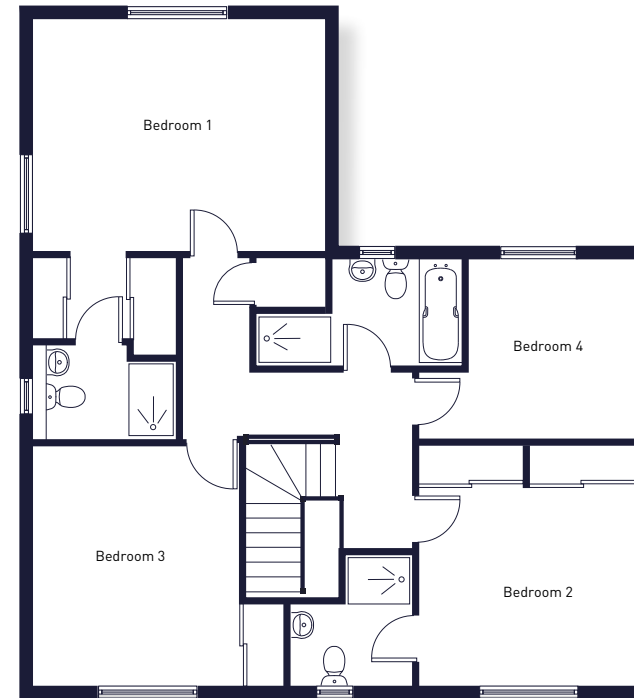
THE YEAT

4 BEDROOM 164.6 sqm / 1,772 sqft

-  Exterior Socket
-  Light
-  Tap



GROUND FLOOR



FIRST FLOOR

PLOT

60

Living Room	6.8m x 3.5m	22'4" x 11'6"
Kitchen	4.9m x 4.6m	16'1" x 15'1"
Dining Room	3.3m x 3.9m	10'10" x 12'10"
Utility	2.0m x 2.2m	6'7" x 7'3"

Bedroom 1	4.7m x 3.7m	15'5" x 12'2"
Bedroom 2	3.5m x 3.1m	11'6" x 10'2"
Bedroom 3	3.9m x 3.3m	12'10" x 10'10"
Bedroom 4	2.9m x 2.7m	9'6" x 8'10"






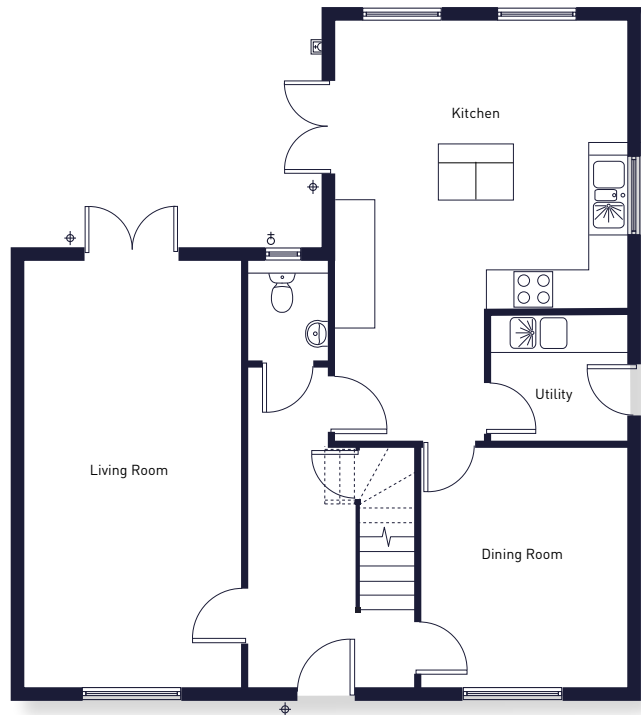
Double garage
38.68 sqm / 416 sqft (approx)

All measurements are approximate and may vary on site. CGIs and floor plans are indicative only and are subject to change.
Please refer to the sales advisor for specific details as layout may be mirrored on individual plots.

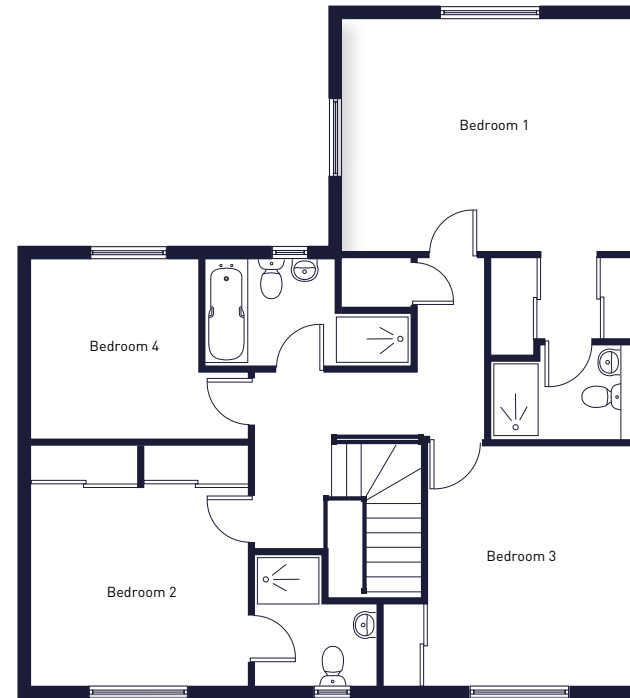
THE YEAT

4 BEDROOM 164.6 sqm / 1,772 sqft

-  Exterior Socket
-  Light
-  Tap



GROUND FLOOR



FIRST FLOOR

PLOT

67

Living Room	6.8m x 3.5m	22'4" x 11'6"
Kitchen	4.9m x 4.6m	16'1" x 15'1"
Dining Room	3.3m x 3.9m	10'10" x 12'10"
Utility	2.0m x 2.2m	6'7" x 7'3"

Bedroom 1	4.7m x 3.7m	15'5" x 12'2"
Bedroom 2	3.5m x 3.1m	11'6" x 10'2"
Bedroom 3	3.9m x 3.3m	12'10" x 10'10"
Bedroom 4	2.9m x 2.7m	9'6" x 8'10"



Detached Double garage
38.68 sqm / 416 sqft (approx)

All measurements are approximate and may vary on site. CGIs and floor plans are indicative only and are subject to change.
Please refer to the sales advisor for specific details as layout may be mirrored on individual plots.

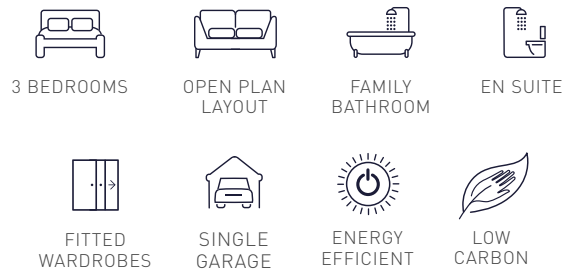
THE HARDY

3 BEDROOM 102.8 sqm / 1,107 sqft

SPECIFICATION OVERVIEW

- Spacious three-bedroom property
- Low-carbon, energy-efficient home, predicted to achieve an A-rated energy assessment
- Modern kitchen with NEFF appliances
- Spacious open plan living area
- Sliding doors maximise flow of natural light
- Fitted wardrobes with sliding doors to bedrooms 1 & 2
- Family bathroom
- En suite to master bedroom
- Single garage with personnel door and private parking
- Sleek roof-integrated Solar PV panels and market leading NIBE Air Source Heat Pump
- Electric car charging point

THE HARDY KEY FEATURES






PLOT

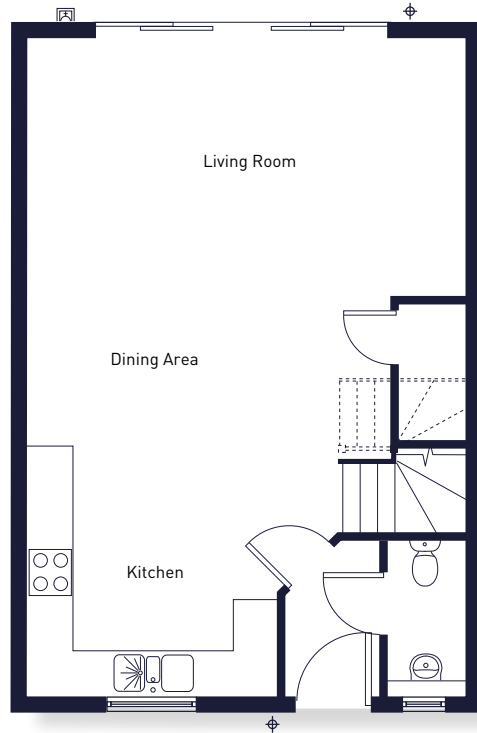


All measurements are approximate and may vary on site. CGIs are of a similar property previously built. Floor plans are indicative only and are subject to change.

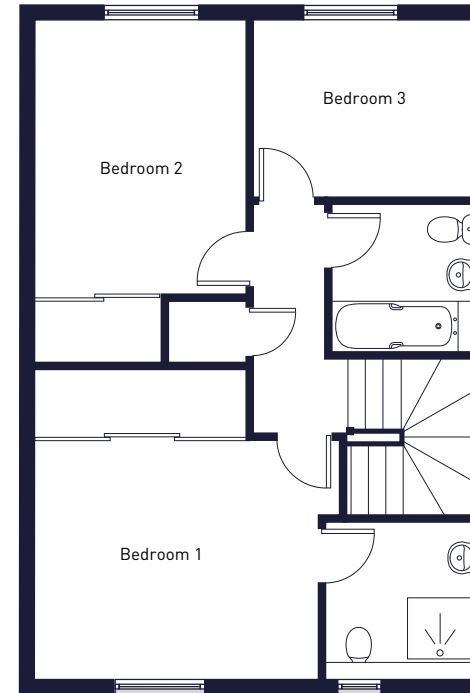
THE HARDY

-  Exterior Socket
-  Light
-  Tap

3 BEDROOM 102.8 sqm / 1,107 sqft



GROUND FLOOR



FIRST FLOOR

PLOTS

39 * 40 * 52

Living Room	5.9m x 3.4m	19'4" x 11'2"
Kitchen/Dining Area	5.6m x 4.9m	18'4" x 16'1"

Bedroom 1	3.8m x 3.5m	12'6" x 11'6"
Bedroom 2	3.6m x 2.8m	11'10" x 9'2"
Bedroom 3	3.0m x 2.4m	9'10" x 7'10"



Single garage
19.39 sqm / 208 sqft (approx)

*Handed

All measurements are approximate and may vary on site. CGIs and floor plans are indicative only and are subject to change.
Please refer to the sales advisor for specific details as layout may be mirrored on individual plots.

THE POTTER

3 BEDROOM 92.6 sqm / 996 sqft

SPECIFICATION OVERVIEW

- Detached three-bedroom property
- Low-carbon, energy-efficient home, predicted to achieve an A-rated energy assessment
- Spacious kitchen with NEFF appliances
- Dining room with French doors to patio
- Utility with external door
- Spacious living room with French doors to patio
- Family bathroom
- En suite to bedroom 1
- Fitted wardrobes to bedrooms 1, 2 & 3
- Sleek roof-integrated Solar PV panels and market leading NIBE Air Source Heat Pump
- Single garage with personnel door and private parking
- Electric car charging point
- Views out to surrounding countryside

THE POTTER KEY FEATURES



3 BEDROOMS



TRADITIONAL LAYOUT



FAMILY BATHROOM



EN SUITE



FITTED WARDROBES



UTILITY



SINGLE GARAGE



ENERGY EFFICIENT



LOW CARBON



PLOTS

37 38 42

All measurements are approximate and may vary on site. CGIs are of a similar property previously built. Floor plans are indicative only and are subject to change.



THE POTTER 37 Weathered Red Brick

All measurements are approximate and may vary on site. CGIs are of a similar property previously built. Floor plans are indicative only and are subject to change.






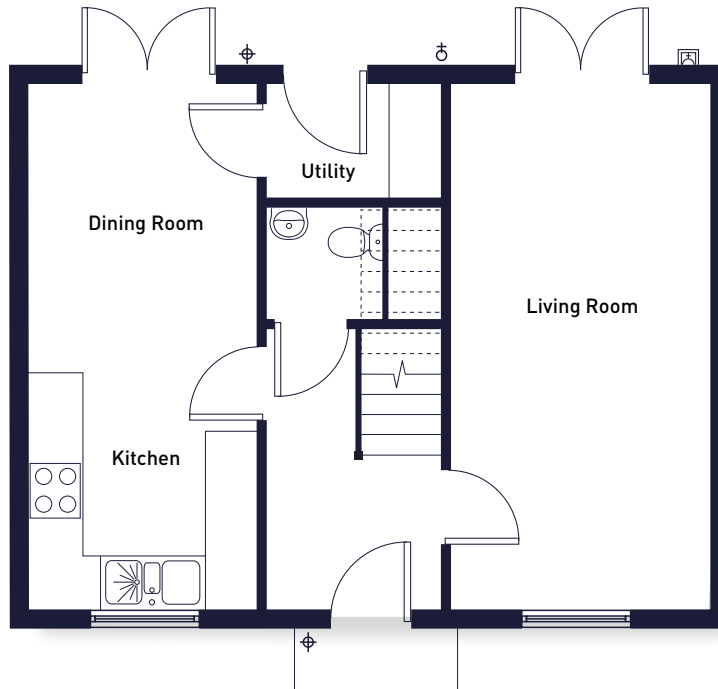
THE POTTER 42 Render in Sand Dune

All measurements are approximate and may vary on site. CGI's are of a similar property previously built. Floor plans are indicative only and are subject to change.

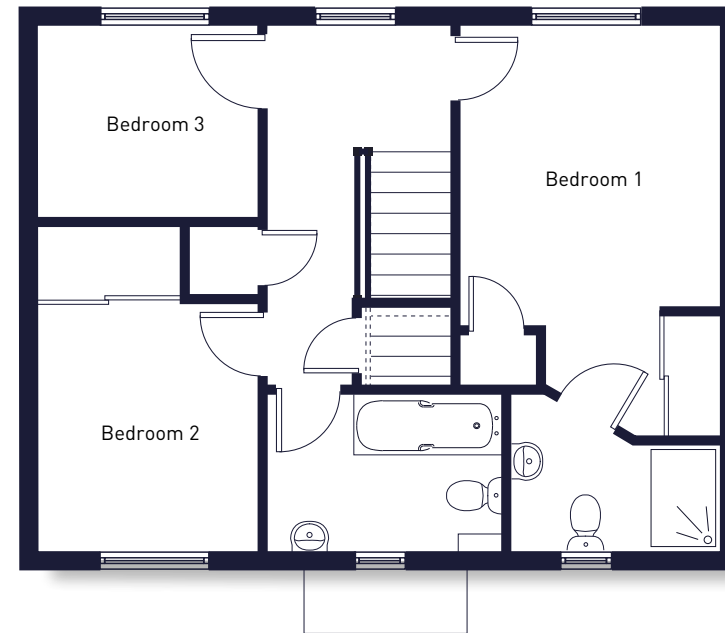
THE POTTER

3 BEDROOM 92.6 sqm / 996 sqft

-  Exterior Socket
-  Light
-  Tap



GROUND FLOOR



FIRST FLOOR

PLOTS

37 **38** **42**

*Handed

Living Room	6.0m x 3.0m	19'8" x 9'10"
Kitchen/Dining Room	6.0m x 2.6m	19'8" x 8'6"
Utility	1.3m x 2.0m	4'3" x 6'7"

Bedroom 1	3.2m x 3.0m	10'6" x 9'10"
Bedroom 2	3.5m x 2.5m	11'6" x 8'2"
Bedroom 3	2.5m x 1.6m	8'2" x 5'3"



Single garage
19.39 sqm / 208 sqft (approx)

All measurements are approximate and may vary on site. CGIs and floor plans are indicative only and are subject to change.
Please refer to the sales advisor for specific details as layout may be mirrored on individual plots.


THE KEATS

3 BEDROOM 91.3 sqm / 983 sqft


SPECIFICATION OVERVIEW

- Semi-detached three-bedroom property
- Low-carbon, energy-efficient home, predicted to achieve an A-rated energy assessment
- Open plan kitchen and dining area
- NEFF integrated appliances
- Separate, spacious living room
- French doors with glazed side panels onto garden
- Family bathroom
- En suite to master bedroom
- Fitted wardrobes to bedrooms 1 & 2
- Sleek roof-integrated Solar PV panels and market leading NIBE Air Source Heat Pump
- Single garage with personnel door and private parking
- Electric car charging point


THE KEATS KEY FEATURES




3 BEDROOMS




TRADITIONAL LAYOUT




FAMILY BATHROOM




EN SUITE




FITTED WARDROBES




SINGLE GARAGE



ENERGY EFFICIENT



LOW CARBON



VIEWS



PLOTS

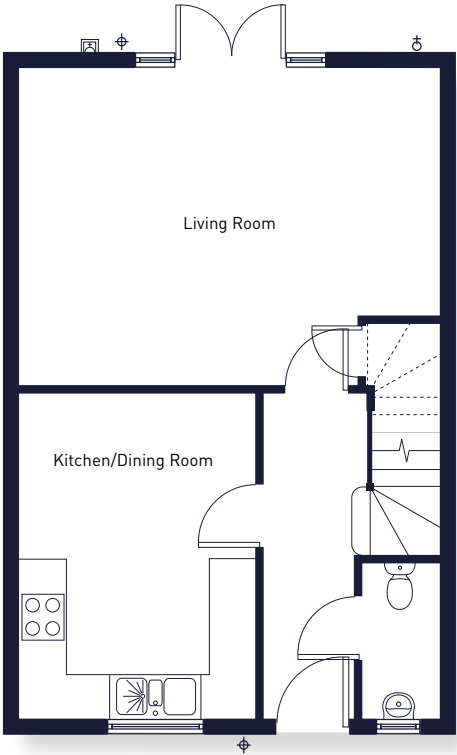
17 35 43

All measurements are approximate and may vary on site. CGIs are of a similar property previously built. Floor plans are indicative only and are subject to change. Plots 4 & 5 are semi-detached

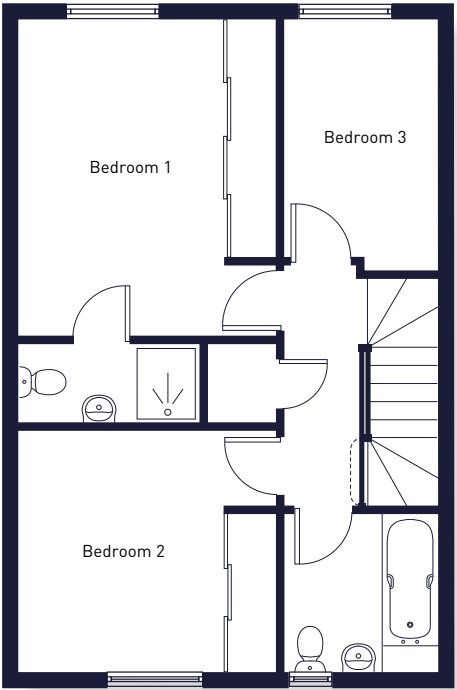
THE KEATS

- Exterior Socket
- Light
- Tap

3 BEDROOM 91.3 sqm / 983 sqft



GROUND FLOOR



FIRST FLOOR

PLOTS

17 35 43

Living Room	4.3m x 5.5m	14'1" x 18'1"
Kitchen/Dining Room	3.1m x 4.1m	10'2" x 13'5"

Bedroom 1	3.3m x 3.4m	10'10" x 11'2"
Bedroom 2	2.4m x 3.4m	7'10" x 11'2"
Bedroom 3	3.3m x 2.0m	10'10" x 6'7"



Single garage
19.39 sqm / 208 sqft (approx)

*Handed

All measurements are approximate and may vary on site. CGIs and floor plans are indicative only and are subject to change.
Please refer to the sales advisor for specific details as layout may be mirrored on individual plots.

Plot 17 - No garage

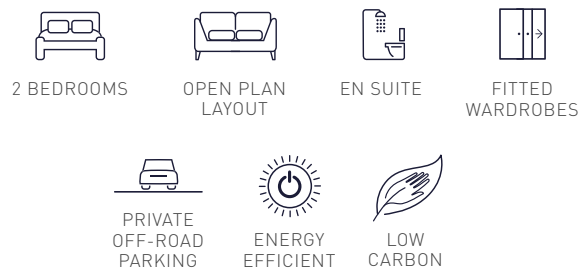
THE TENNYSON

2 BEDROOM 81 sqm / 874 sqft

SPECIFICATION OVERVIEW

- Semi-detached two-bedroom property
- Low-carbon, energy efficient home, predicted to achieve an A-rated energy assessment
- Open plan kitchen, living and dining area
- Integrated NEFF kitchen appliances
- French doors onto patio and garden
- En suites to both bedrooms
- Fitted wardrobes with sliding doors
- Private garden
- Sleek roof-integrated Solar PV panels and market leading NIBE Air Source Heat Pump
- Electric car charging point

THE TENNYSON KEY FEATURES






PLOTS

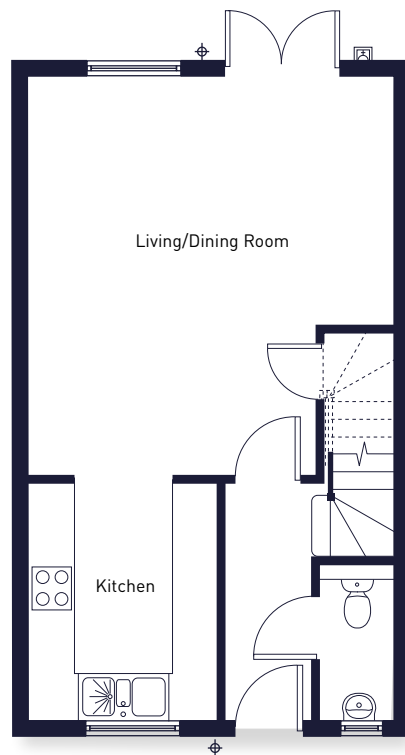


All measurements are approximate and may vary on site. CGIs are of a similar property previously built. Floor plans are indicative only and are subject to change.

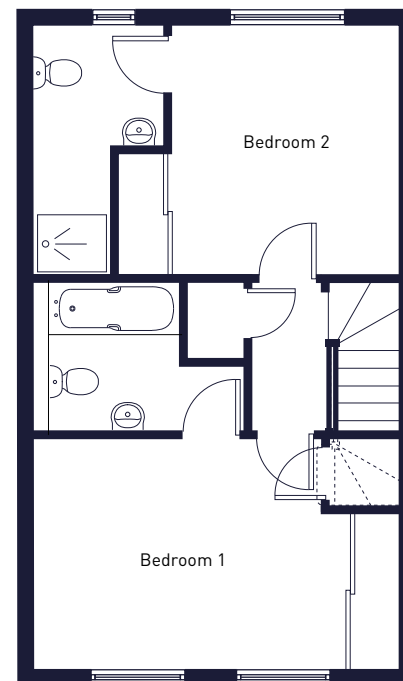
THE TENNYSON

2 BEDROOM 81 sqm / 874 sqft

-  Exterior Socket
-  Light
-  Tap



GROUND FLOOR



FIRST FLOOR

PLOTS



*Handed

Living/Dining Room	5.2m x 4.8m	17'1" x 15'9"
Kitchen	3.1m x 2.5m	10'2" x 8'2"

Bedroom 1	4.2m x 3.1m	13'9" x 10'2"
Bedroom 2	3.2m x 3.1m	10'6" x 10'2"

All measurements are approximate and may vary on site. CGIs and floor plans are indicative only and are subject to change.
Please refer to the sales advisor for specific details as layout may be mirrored on individual plots.

THE MILNE

2 BEDROOM 77 sqm / 829 sqft

SPECIFICATION OVERVIEW

- Semi-detached two-bedroom property
- Low-carbon, energy efficient home, predicted to achieve an A-rated energy assessment
- Open plan kitchen and dining area
- Integrated NEFF kitchen appliances
- French doors with glazed side panels onto patio and garden
- En suite to master bedroom
- Family Bathroom
- Fitted wardrobes with sliding doors
- Private garden
- Sleek roof-integrated Solar PV panels and market leading NIBE Air Source Heat Pump
- Private parking
- Electric car charging point

THE MILNE KEY FEATURES



2 BEDROOMS



TRADITIONAL LAYOUT



FAMILY BATHROOM



EN SUITE



FITTED WARDROBES



PRIVATE OFF-ROAD PARKING



ENERGY EFFICIENT



LOW CARBON






PLOTS

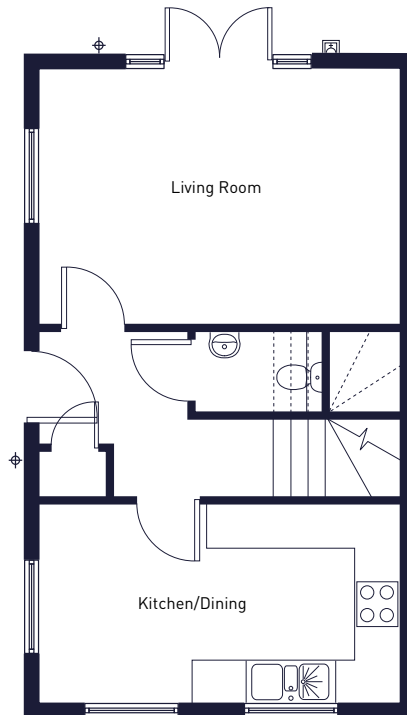


All measurements are approximate and may vary on site. CGIs are of a similar property previously built. Floor plans are indicative only and are subject to change.

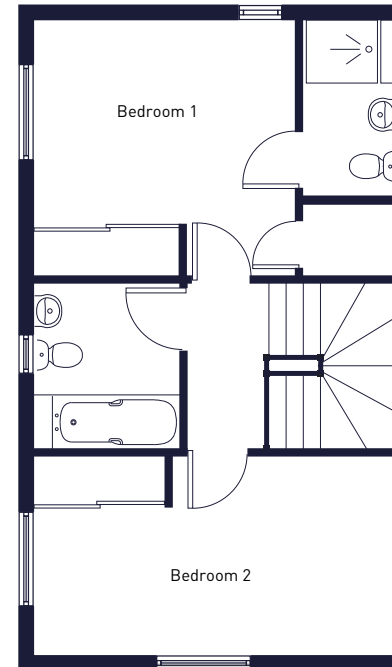
THE MILNE

2 BEDROOM 77.0 sqm / 829 sqft

-  Exterior Socket
-  Light
-  Tap



GROUND FLOOR



FIRST FLOOR

PLOTS



Living Room	3.4m x 4.8m	11'2" x 15'9"
Kitchen/Dining Room	2.7m x 4.8m	8'10" x 15'9"

Bedroom 1	2.7m x 2.7m	8'10" x 8'10"
Bedroom 2	2.2m x 4.8m	7'3" x 15'9"

All measurements are approximate and may vary on site. CGIs and floor plans are indicative only and are subject to change.
Please refer to the sales advisor for specific details as layout may be mirrored on individual plots.

PROUD TO BE DIFFERENT

Room to live

Freeman Homes have garnered a reputation for generously proportioned homes that will be a pleasure to live in for years to come.

Abundance of storage

You will find ample built-in storage throughout our homes - a feature for which our customers continually praise us.

Exceptional quality

All of the homes at Credenhill have quality touches throughout, including Porcelanosa tiles, underfloor heating, integrated NEFF kitchen appliances, Villeroy & Boch sanitaryware and Hansgrohe brassware.

Peace of mind

All of our homes have a ten-year NHBC warranty and our team is always on hand to assist you with any queries you may have.

Excellent customer service

We are a customer-focused organisation whose customers are at the forefront of our minds when we design, build and hand over our homes. We listen to our customers and treat them like members of our family, getting to know each individual and doing what we can to remove any stress and make moving an enjoyable experience.

Award-winning

Our growing array of accolades for design and innovation is testament to our dedication to excellence. You can be assured that every Freeman Home is of the highest quality.



BUILDING FOR A BETTER FUTURE

We have all been rethinking the way we live our lives, and here at Freeman Homes we are more committed than ever to building for a better future.

Enjoy space to work, relax and play; countryside in which to exercise, connect with nature and breathe fresh air every day; a safe community in which to live, where you can spend quality time with loved ones.

Freeman Homes is a second generation, family-owned business with a heritage dating back to 1966. Our commitment to excellence remains true to the values upon which our company was founded.

Family is at the heart of everything we do, and we are proud to build homes where memories are made and cherished.

We are passionate about the stunning landscapes within which we build, and actively seek locations that offer great lifestyles.

From our family to yours



SUPPORTING THE LOCAL COMMUNITY

**We are contributing £377,181
to the Credenhill and the surrounding
local community**

Education Facilities £222,944

Enhanced educational infrastructure at St Mary's Primary
School and Weobley High School

Recycling & Waste Management £5,360

Waste collection facilities

Sport Facilities £38,192

Improvements at Roman Park

Transport £110,685

Improvements to transport facilities by
Herefordshire Council

New Cycleway

Upgrading circa 300m of footpath to a
footpath and cycleway for better connecting routes

Affordable Homes

Design and construction of affordable properties that will
be made available to local people (subject to Herefordshire
Council criteria)

BUILDING FOR A BETTER FUTURE



LOCAL LINKS

Some useful links to notable, local establishments and amenities we would like to share with you.

EDUCATION

credenhill.hereford.sch.uk

hlcollege.ac.uk

hca.ac.uk

GET ACTIVE

haloleisure.org.uk

south-herefordshireregc.co.uk

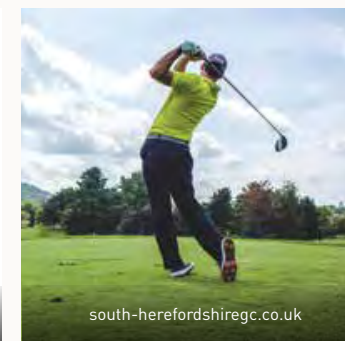
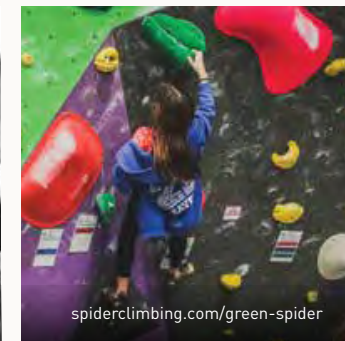
spiderclimbing.com/green-spider

holmerpark.co.uk

SEE AND DO

wyedeantourism.co.uk

visitherefordshire.co.uk



FreemanHomes

OAKFIELDS

CREDENHILL, HEREFORDSHIRE

A PERSONALISED JOURNEY

At Freeman Homes, we pride ourselves on putting our customers at the heart of everything we do. Experience a personalised homebuying journey where your individual needs are listened to and valued. As a family-run business, we understand the importance of the finer details and personal touches, making your move stress-free and enjoyable.

Our dedicated after-sales team is on hand to provide support and assistance long after your completion day. Your friendly and effective direct point of contact will be our Customer Services Manager, who will stay in touch and ensure your ongoing satisfaction.

*Don't just take our word for it.
Here is what some of our customers have said:*

“

“All the local people we spoke to commented on Freeman Homes' reputation for good quality building. Once we approached them we couldn't fail to be impressed. We highly recommend Freeman Homes for the quality of their work and caring attitude”

R & H Moir

“It has been a real pleasure to deal with them. I cannot recommend them highly enough and am happy to thank them for all their assistance”

Mr David Allen

“The location, design, and build of my new home are amazing. From my initial interest, to purchase and aftercare, the staff were helpful and informative – nothing was too much trouble.”

Mrs T Mills

“They were very easy to deal with, very gracious, trustworthy and reassuring. Buying a house can be stressful, but it was so refreshing. I recommend them to everyone, and my in-laws even moved into one!”

Kate

”



OAKFIELDS



Talk to our friendly team today

01594 543354

credenhill@freemanhomes.co.uk
www.freemanhomes.co.uk

FreemanHomes
A division of the MF Freeman Group



/// what3words

sofas.saves.mainframe

Oakfield View, Credenhill, Herefordshire HR4 7DA