



Three Willows

FOWNHOPE, HEREFORDSHIRE

A LIMITED COLLECTION BY

FreemanHomes





FreemanHomes

ASPIRATIONAL HOMES, DESIRABLE LOCATIONS



Three Willows

*A limited collection of ten properties where
unparalleled luxury meets
the serenity of countryside living*

A LIMITED COLLECTION BY

FreemanHomes

A beautifully
curated collection
of properties in
a location like
no other

FreemanHomes



We are delighted to present our limited collection of new homes at Three Willows. It is a privilege to build in Fownhope, a location not only rich in natural beauty but renowned for its vibrant community. We have taken great care to ensure that the design of each home harmonises with its surroundings, creating a welcoming place to live. The landscaped orchard with heritage fruit trees and a wildflower meadow, provides an attractive setting for these individually designed homes. Each property has been carefully planned with both zero-carbon living and traditional architectural details, which blend seamlessly with the character of the local area.

Luke Freeman
Founder



At Three Willows, we've curated a small collection of exquisite homes, where every detail tells a story. Our properties are crafted with a dedication to bespoke elegance and contemporary ease, ensuring your home is not just a place, but a lifestyle. With luxury specifications, thoughtful designs and finer details, we've created spaces that blend effortlessly with maintenance with distinctive character. Discover a refined living experience tailored to your individual journey - because your time is invaluable, and your home should mirror that sentiment.

Hayley Coombs
Sales & Operations Director



Three Willows

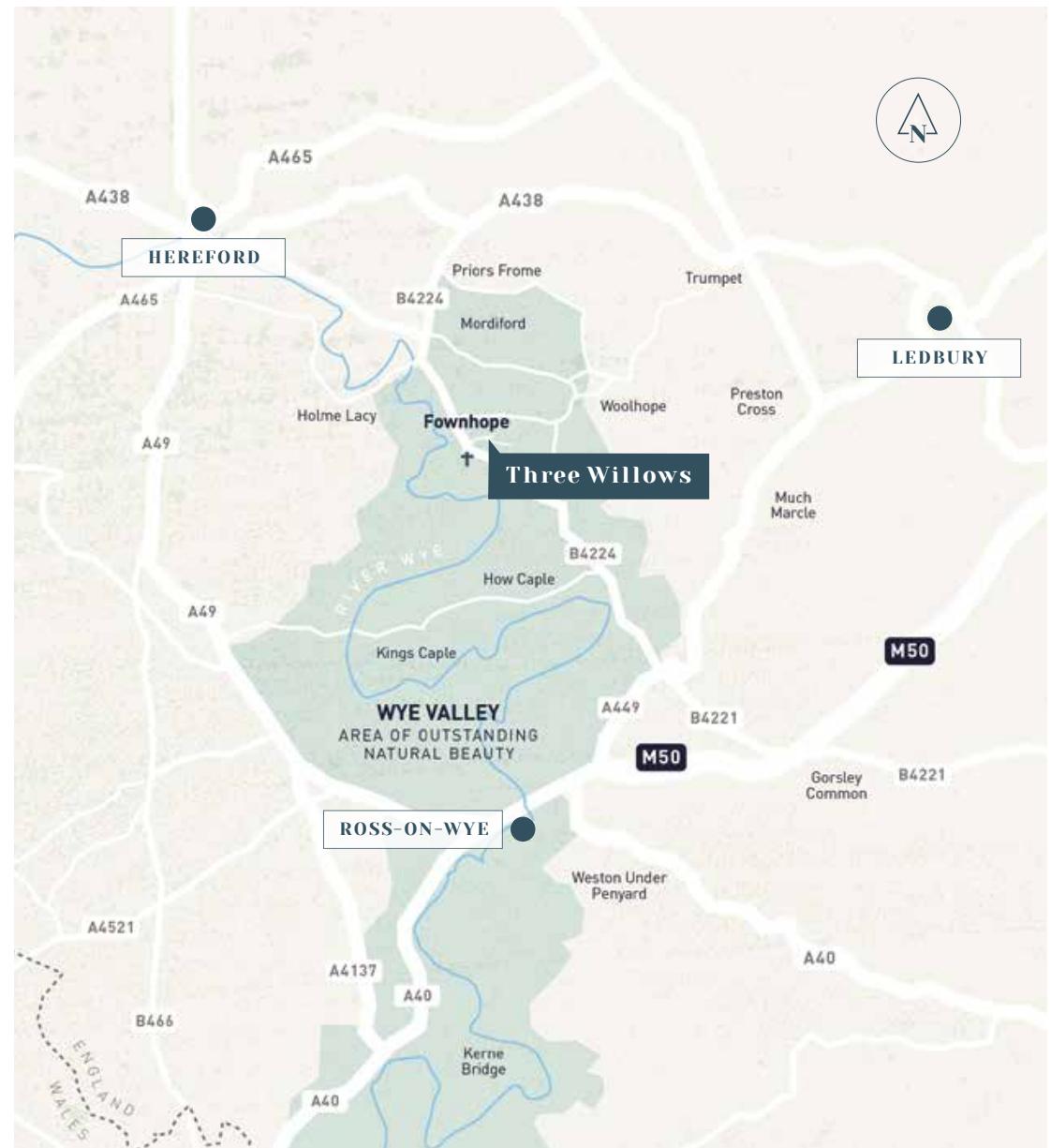
A well-connected community

Perfectly positioned between Hereford, Ross-on-Wye, and Ledbury, Fownhope offers the tranquillity of rural life with the convenience of excellent connections to some of Herefordshire's most vibrant market towns, and the Cathedral City of Hereford.

Less than 8 miles from Fownhope is the M50, connecting you to M5/Midlands, and via the A40 to M4/South Wales.



FreemanHomes



"Surrounded by the lush greenery of ancient woodlands and the gentle flow of the River Wye, Fownhope is a haven for nature lovers, offering an immersive experience in the heart of Herefordshire's most stunning landscapes."



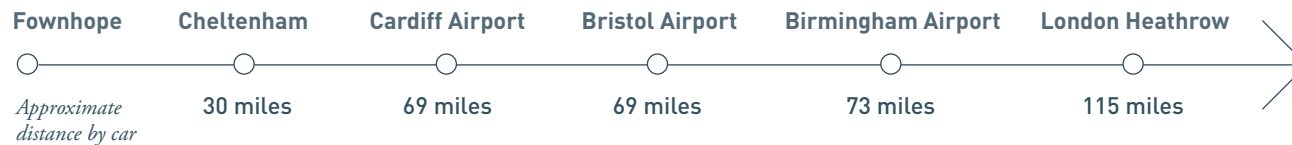
The River Wye - Area of Outstanding Natural Beauty



Ledbury 17C Market House



Hereford Cathedral





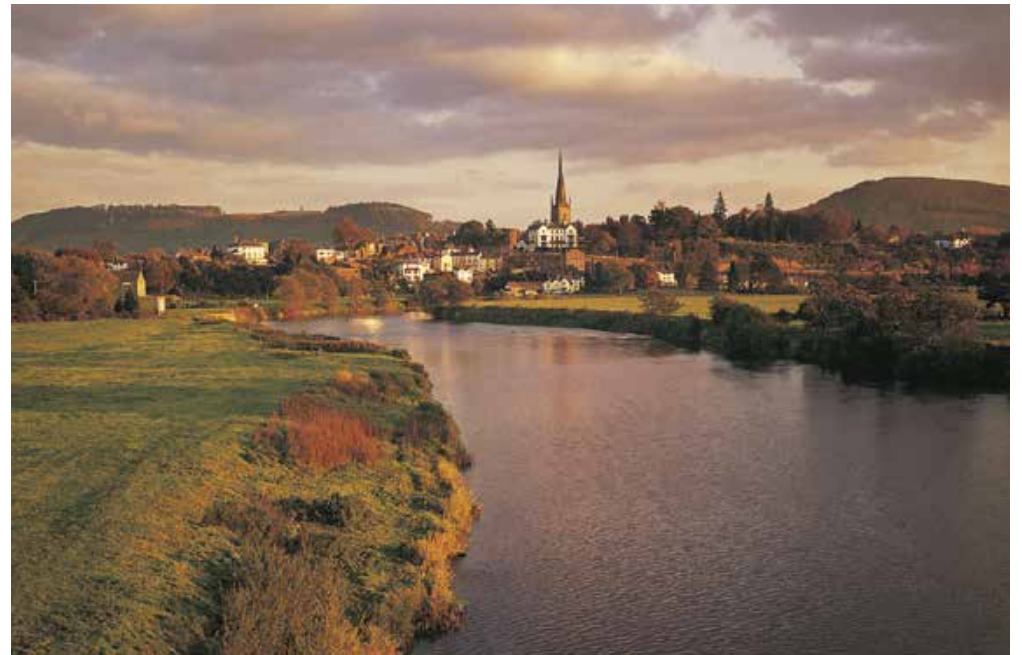
Shopping in Hereford



Burger Shop, Hereford



*House of John Kyrle,
'Man of Ross', Ross-on-Wye*



Ross-on-Wye



"Ross-on-Wye Golf Club, a top-ranked favourite among golfers, is renowned for its stunning woodlands and beautiful tree-lined fairways. The course gracefully follows the natural contours of the land, remaining true to its original 1960 design."



River Wye



Wye Valley - Woodland walks

Herefordshire offers the perfect blend of adventure and relaxation. Unwind within breathtaking landscapes, savour local delights at bustling markets, paddle the serene River Wye, tee off at scenic golf courses, or explore the winding walking and cycling trails. There's endless discovery awaiting you.

Circular Walks, Fownhope

Follow the
path of
nature to
find your
way home

FreemanHomes

With the best of Herefordshire's countryside right on your doorstep, every day offers a new adventure – just pull on your wellies and step out for walks that change with the seasons.

Fownhope Circular Walk passes Three Willows, with approximately 4.5 miles of a well-marked trail through woodland, meadows and a wealth of beautiful scenery.

Countryside charm

Nestled in the heart of Herefordshire's breathtaking countryside, Fownhope is a charming village that offers an idyllic blend of rural tranquillity and modern convenience. Renowned for its unspoiled natural beauty, this picturesque village is surrounded by lush woodlands, rolling hills, and the meandering River Wye, providing a serene backdrop for country living at its finest.

Fownhope is more than just a scenic retreat—it's a vibrant community with a rich history, a welcoming atmosphere, and a range of local amenities that cater to every need. Whether enjoying a leisurely stroll through the village's historic streets, savouring a meal at one of the local pubs, or exploring the surrounding countryside, residents are afforded a lifestyle that seamlessly combines elegance and comfort.

Located just a short drive from the historic city of Hereford, Fownhope provides the perfect balance of rural seclusion and accessibility. The village's excellent transport links connect you effortlessly to the wider region, while a host of nearby attractions, including golf courses, nature reserves, and cultural landmarks, ensure that there is always something to discover.

Now, in this coveted setting, an exclusive collection of just 10 spacious homes offers the rare opportunity to become part of this thriving community. Thoughtfully designed to reflect the beauty and character of the surrounding landscape, each home in this luxurious development promises an unparalleled standard of living in one of Herefordshire's most desirable locations.

Discover local delights

What's nearby

Local Fare

Herefordshire is celebrated for its vibrant local produce and burgeoning foodie scene. You'll find a delightful array of locally brewed ales, ciders, and cocktails, complemented by tipples from nearby distilleries in most eateries. In Fownhope, enjoy home-cooked classics at The New Inn or savour contemporary gastro-pub fare at The Green Man. The surrounding villages are dotted with charming country pubs and farmhouse delis, while The Café @ Coo Corner in Fownhope offers a cosy spot for freshly roasted coffee and homemade cake.



The Green Man, Fownhope

Retail & Essentials

The West End Store in Fownhope offers an impressive variety of everyday essentials, stocks locally farmed meats as well as fresh seasonal vegetables, fruit and salads - you can find the village Post Office inside too. John A Pritchard & Son, the local 5-star butcher's shop offers excellent quality meats that come highly recommended by the local community. For unique, handmade gifts and eco-friendly products, visit The Shop @ Coo Corner, a charming boutique with refillable items and a dedicated refill service. In Hereford, enjoy a blend of popular high-street brands and independent shops. Wander through cobbled streets to discover hidden treasures and visit the Old Hereford Market, which features a Waitrose supermarket and ODEON cinema. Nearby Ledbury and Ross-on-Wye are also rich with independent shops, restaurants, delis, and café.

Arts & Culture

Fownhope offers a rich array of clubs and societies for all ages, including badminton, bowls, flower arranging, gardening, cricket, table tennis, and Tae Kwon-Do. The Fownhope Fringe organises engaging workshops and events featuring music, art, wine tasting, photography, and crafts. Flicks in the Sticks presents a mix of new releases, classics, and comedies at the New Memorial Hall. Beyond the village, Herefordshire boasts an exciting range of museums, attractions, and festivals. The Courtyard in Hereford is a vibrant arts centre showcasing touring shows and original productions, while Hereford Cathedral, home to the Mappa Mundi and the Chained Library, hosts significant events and exhibitions.

Health & Wellbeing

In addition to the village's sports clubs and recreation fields, Fownhope boasts its own private health and leisure club, Wye Leisure. With saunas, steam rooms, spa pools, heated stone beds, and swimming pools, it provides the perfect setting to relax and unwind after a gym session or exercise class. The club features both family-friendly and adult-only areas, as well as a terrace bar and poolside café.



Community centre, Fownhope New Memorial Hall



Wye Leisure, Fownhope



Cherry Hill Woods, Fawnhope

Nature's inspiration

"a connection to the land infuses
creations with authenticity"

FreemanHomes



Baileys Home Store, Ross-on-Wye



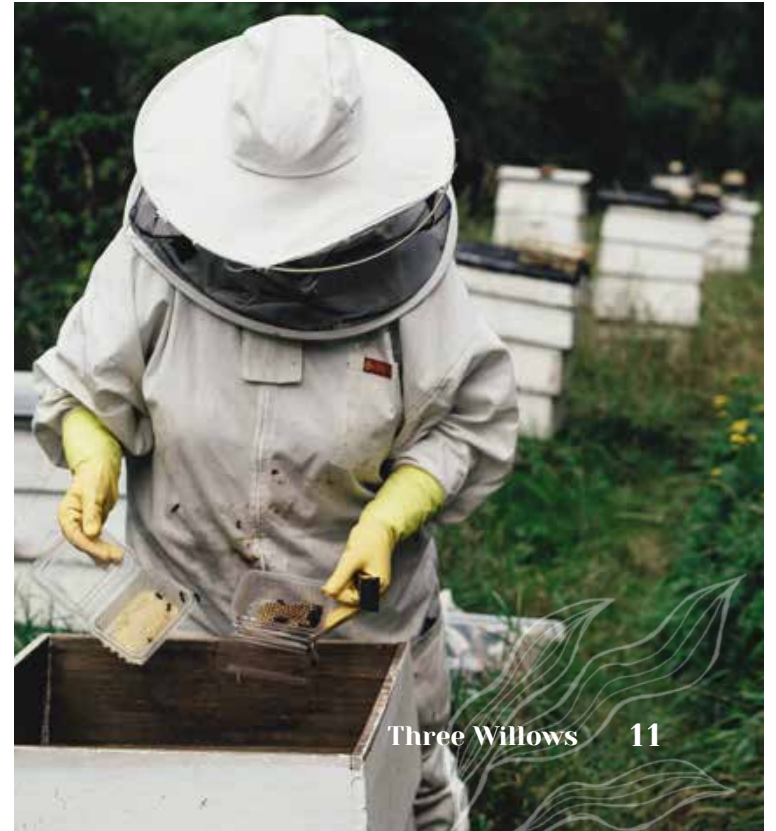
Herefordshire apples

Your local landscape

From the rich textures of natural materials used in architecture, to the unique offerings of local shops, crafts, and artisans, the regions' beauty is reflected in every corner of the county.



Chase Distillery gin & vodka from the wilds of Herefordshire



Beekeeping in Herefordshire

Bridges to new beginnings

Bridging history & home

The properties at Three Willows are named after bridges that can be found across Herefordshire. In addition to their historical and cultural significance, they symbolise connection and unity, evoking a sense of continuity between past and present, providing a path to new beginnings.

Wilderness Wonders

Fownhope is situated within the Wye Valley Area of Outstanding Natural Beauty, surrounded by breathtaking scenery and world-class walking trails, including The Wye Valley Walk which passes through the village. Enjoy riverside and woodland walks from your doorstep, canoeing and paddleboarding on the River Wye, and cycling in Haugh Woods—the outdoor pursuits are limitless.

*Wye bridge,
Hereford*



*Kerne Bridge,
Ross on Wye*



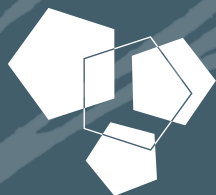
*Wilton Bridge,
Ross on Wye*



Whitney Toll Bridge, Whitney-on-Wye

The Limited Collection

Designed in partnership with Una Architectural



UNA
ARCHITECTURAL

FreemanHomes

Experience inspired design and exceptional living,
rooted in the natural beauty that surrounds you

Discover a rare opportunity to own one of just ten individual properties in the heart of Fownhope - a village renowned for its charm and tranquillity. Freeman Homes, a trusted local family developer, proudly presents a limited collection of homes. Perched in an elevated position, these sensitively distinguished properties offer breathtaking views and are nestled amidst the rolling countryside. Each home has been designed with exceptional attention to detail, providing properties that gently blend into their surrounding natural environment. The homes

are thoughtfully spaced to maximise both individual privacy and the natural beauty of the surroundings. Inside, you'll find a premium specification throughout, with generous layouts that cater to modern living while maintaining an air of sophistication and comfort.

Three Willows combines unparalleled luxury with the serenity of country living, making it a coveted haven for those who seek both exclusivity and a connection to nature.



AVAILABILITY

R
RESERVED

S
SOLD

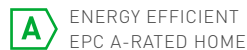
*Fly through Three Willows with
our drone video for a closer look*



Three Willows 14

Ballingham

Experience the pinnacle of refined living in The Ballingham, a distinguished dormer bungalow where sophistication meets functionality. The ground floor features a grand kitchen at its heart, with premium appliances and a chic sit-up island, perfect for both culinary adventures and intimate gatherings. Effortless sliding glass doors to the kitchen and living room invite the beauty of the outdoors inside. A separate utility room and walk-in pantry offer practical luxury, while the sunroom, illuminated by a striking roof lantern, provides a tranquil retreat bathed in natural light. Ground floor rooms offer serene sanctuaries, each with their own en suite. Upstairs, an additional bedroom awaits with a chic dressing room and separate bathroom, a harmonious blend of elegance and comfort.



2,210
Square Feet

206
Square Metres



Aspect

Quietly positioned at the highest point of Three Willows, this property offers a serene retreat with a south-west facing, low-maintenance wraparound garden. It features a generous double garage, private driveway, and fronts onto an orchard with a landscaped front garden. The expansive back patio is perfect for outdoor living, with the home set against an open field, bordered by hedging and a treeline.

Ballingham

Specification

Kitchen, Utility, Pantry & Boot Room

- Custom-painted Waterford kitchen in Providence Blue with under-cabinet lighting
- Quartz countertop with upstands and under-mount sink
- Large island unit with NEFF 5-zone induction hob with integrated extraction fan
- Undermount sink with Quooker 3-in-1 boiling water tap
- NEFF integrated multi-function oven and microwave
- Fisher & Paykel double dishwasher drawers
- Fully shelved pantry and fitted-out boot room area
- Plumbing and electrics ready for washing machine and tumble dryer

Custom-painted Waterford kitchen in Providence Blue

Bathroom, En Suites & Cloakroom

- Modern sanitaryware with built-in vanity and Hansgrohe taps
- Freestanding bath to main bathroom
- Mira showers
- Heated towel ladder radiator
- Porcelanosa ceramic tiling to walls and floor

Interior finishes

- Staircase with ash handrail
- Matt paint finish to walls and ceilings
- Porcelanosa ceramic floor tiles or Herringbone Amtico flooring to kitchen, utility & sunroom
- Luxury carpets to living room, hall & bedrooms
- Oak pre-finished internal doors with brushed chrome door furniture
- Bespoke fitted wardrobes to all bedrooms

Heating, electric & lighting

- NIBE air source heat pump
- Wet underfloor heating throughout the ground floor
- Thermostatically controlled radiators to first floor
- Viridian solar panels and battery storage
- Mendip Churchill woodburner with black granite hearth
- Low energy lighting throughout with LED downlights to kitchen, hallway, cloakroom and bathrooms

Exterior finishes

- Electric car charging point
- Landscaped gardens as per approved plan
- Contemporary grey patio and paths
- External waterproof socket and tap to rear elevation
- Detached double garage with power, light and electrically operated sectional garage door
- Natural feather edge cladding

Security & warranty

- Two-year Homeowner warranty from Freeman Homes
- Ten-year structural NHBC warranty
- Multi-point locking mechanisms to external doors
- Security alarm (optional upgrade)

Quooker 3-in-1 boiling water tap



Custom-painted kitchen



Quartz countertop

*NEFF 5-zone
induction hob
with integrated
extraction fan*





Herringbone Amtico flooring



Full height ceiling to kitchen



NEFF integrated multi-function oven and microwave



Fisher & Paykel double dishwasher



Fully shelved pantry and fitted-out boot room

*Sunroom fitted with Amtico
Herringbone flooring and
striking roof lantern*



*Luxury carpets
to living room
& bedrooms*



Modern sanitaryware with built-in vanity and Hansgrohe taps

Ballingham

Floor plans

- ⏏ Exterior Socket
- ⊕ Light
- ⚓ Tap

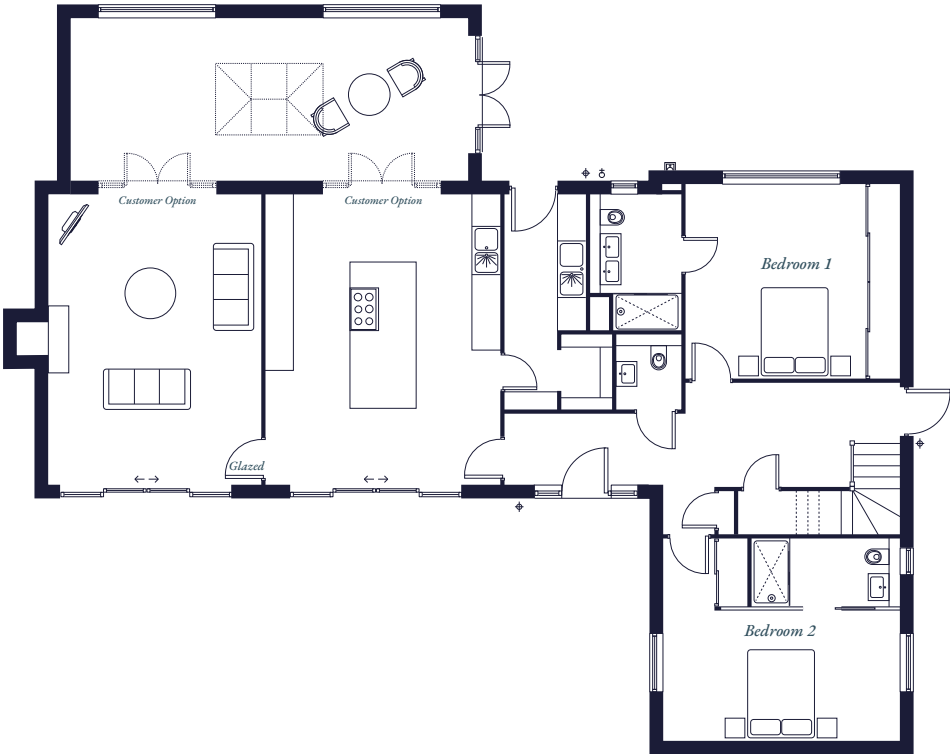
Living Space

2,210

Square Feet

206

Square Metres



GROUND FLOOR

Kitchen/Dining Room

6.07m x 4.95m 19' 11" x 16' 3"

Utility

2.84m x 1.70m 9' 4" x 5' 7"

Living Room

6.07m x 4.46m 19' 11" x 14' 8"

Pantry

1.57m x 1.06m 5' 2" x 3' 6"

Sun Room

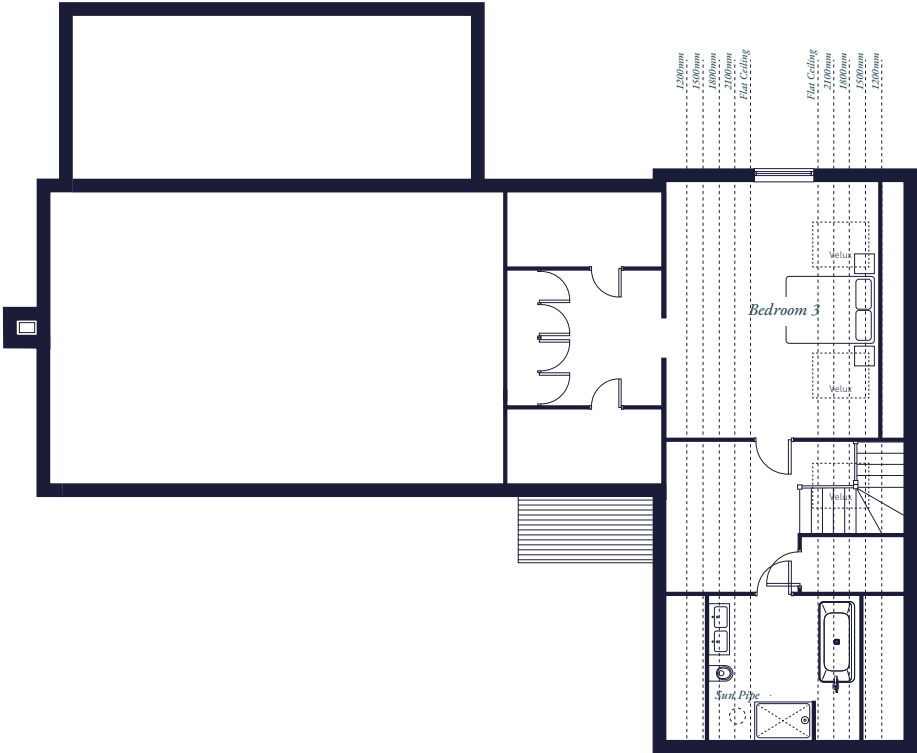
8.33m x 3.37m 27' 4" x 11' 1"

Bedroom 1

4.00m x 4.49m 13' 1" x 14' 8"

Bedroom 2

2.72m x 4.95m 8' 11" x 16' 2"



FIRST FLOOR

Bedroom 3

5.29m x 4.45m 17' 4" x 14' 7"



Detached
Double Garage
39 sqm / 419.8 sqft

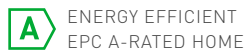
All measurements are approximate and may vary on site. CGIs and images are indicative only and are subject to change.

Greyfriars

Discover The Greyfriars, where generous elegance redefines modern living. The extensive open-plan kitchen, dining, and family area is designed to foster both function and style, featuring high-end appliances and a sleek island with sit-up kitchen bar. Dual French doors open onto patios and the garden, enhancing the airy atmosphere. A thoughtfully designed utility room ensures practical storage, while the downstairs study offers an inspiring workspace with direct access to the garden. The separate living room, also graced by French doors, provides a serene retreat. Upstairs, the master suite includes a luxurious en suite, while versatile rooms and a well-appointed family bathroom cater to diverse needs, embodying both practicality and sophistication.



Living Space



2,097
Square Feet

195
Square Metres



Aspect

Situated in an elevated position at Three Willows, Greyfriars offers luxurious living and fronts onto a traditionally planted Herefordshire orchard. Its south-southwest facing garden is perfect for sun-soaked outdoor gatherings, complemented by a generous patio and landscaped front garden. With a detached double garage, this home offers the ideal blend of modern convenience and countryside charm.

Greyfriars

Specification

Kitchen, Utility

- Custom-painted Princeton kitchen in Stone with under-cabinet lighting
- Quartz countertop with upstands and under-mount sink to kitchen and utility room
- Island unit NEFF 5-zone induction hob with integrated extraction fan
- Spacious pantry unit
- Undermount sink with Quooker Flex 3-in-1 boiling water tap
- NEFF integrated multi-function oven and microwave
- Fisher & Paykel double dishwasher drawers
- Large utility fully fitted with wall and floor units
- Bosch washing machine and Bosch condenser tumble dryer



*Quooker 3-in-1
boiling water tap*

Bathroom, En Suites & Cloakroom

- Modern sanitaryware with built-in vanity and Hansgrohe taps
- Free-standing squaro-edge bath to main bathroom
- Mira showers
- Heated towel ladder radiator
- Porcelanosa ceramic tiling to walls and floor

Interior finishes

- Staircase with ash handrail
- Matt paint finish to walls and ceilings
- Porcelanosa ceramic floor tiles or Herringbone Amtico flooring to kitchen, utility & entrance hall
- Luxury carpets to living room, study, stairs & bedrooms
- Oak pre-finished internal doors with brushed chrome door furniture
- Bespoke fitted wardrobes to bedrooms

Custom-painted Princeton kitchen in Stone

Heating, electric & lighting

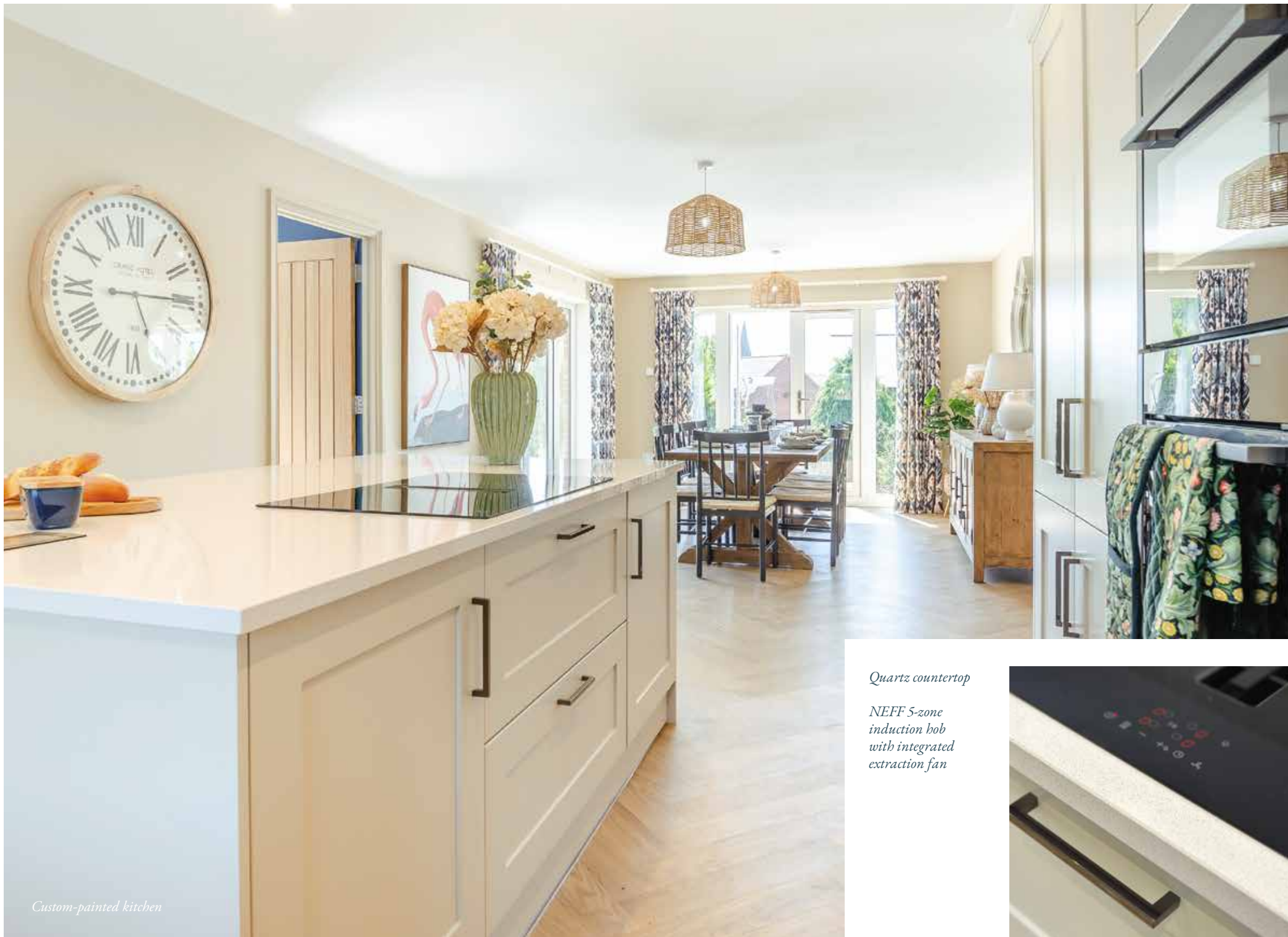
- NIBE air source heat pump
- Wet underfloor heating throughout the ground floor
- Thermostatically controlled radiators to first floor
- Viridian solar panels and battery storage
- Mendip Churchill woodburner with black granite hearth
- Low energy lighting throughout with LED downlights to kitchen, hallway, cloakroom & bathrooms

Exterior finishes

- Electric car charging point
- Landscaped gardens as per approved plan
- Contemporary grey patio and paths
- External waterproof socket and tap to rear elevation
- Detached double garage with power, light and electrically operated sectional garage door
- Natural feather edge cladding

Security & warranty

- Two-year Homeowner warranty from Freeman Homes
- Ten-year structural NHBC warranty
- Multi-point locking mechanisms to external doors
- Security alarm (optional upgrade)



Custom-painted kitchen

Quartz countertop

*NEFF 5-zone
induction hob
with integrated
extraction fan*





NEFF integrated multi-function oven and microwave



Quartz countertop with upstands and undermount sink to utility room



Clever storage solutions throughout, plus a fully shelved pantry and fitted-out boot room



Herringbone Amtico flooring to kitchen, dining, utility & entrance hall





Modern sanitaryware with built-in vanity & Hansgrohe taps



Raised bed planters – Perfect for growing your own vegetables or cultivating a herb garden

*Garden landscape designed by Stacey Kath of Dors Garden in Ross on Wye
- A space designed to relax in*

Greyfriars Floor plans

- Exterior Socket
- Light
- Tap

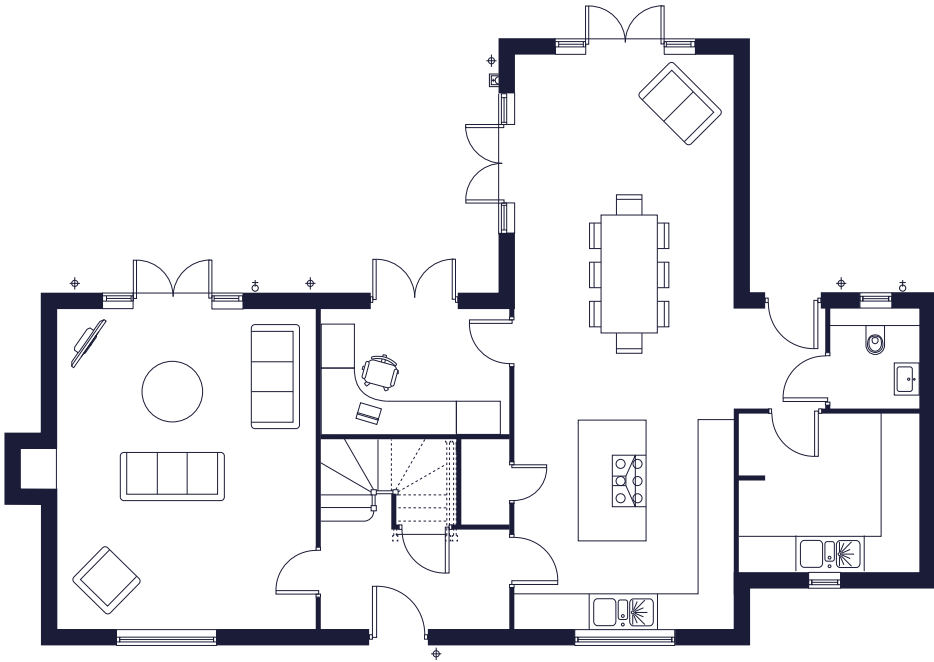
Living Space

2,097

Square Feet

195

Square Metres



GROUND FLOOR

Kitchen/Dining Room

10.12m x 3.82m 33' 3" x 12' 7"

Utility

2.79m x 3.07m 9' 2" x 10' 1"

Living Room

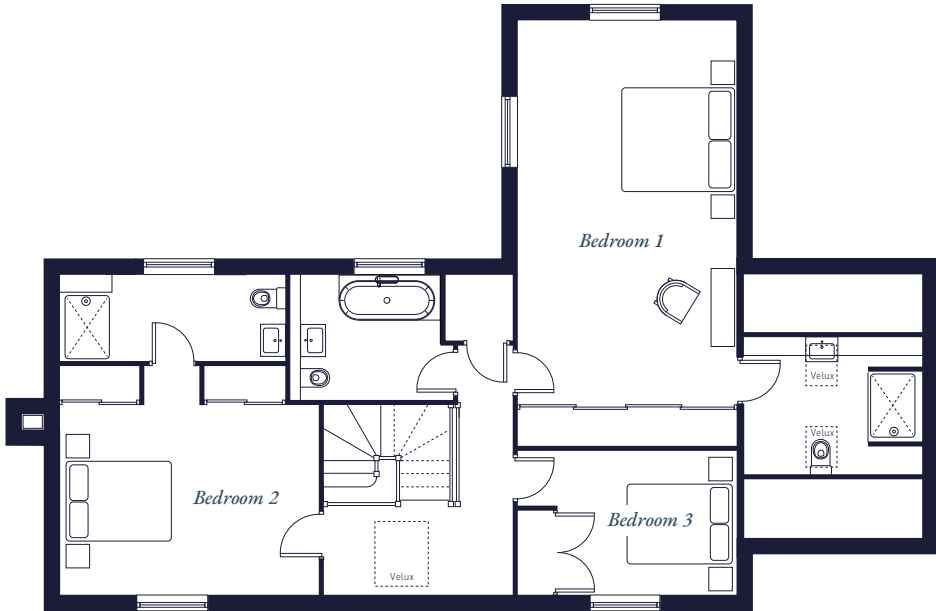
5.62m x 4.56m 18' 5" x 15'

Pantry

1.52m x 0.88m 5' x 2' 11"

Study

2.20m x 3.36m 7' 3" x 11' 0"



FIRST FLOOR

Bedroom 1

7.49m x 3.82m 24' 7" x 12' 6"

Bedroom 2

4.03m x 4.56m 13' 3" x 15'

Bedroom 3

2.54m x 3.82m 8' 4" x 12' 6"



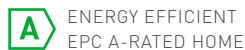
Detached
Double Garage

39 sqm / 419.8 sqft

All measurements are approximate and may vary on site. CGIs and images are indicative only and are subject to change.

Glasbury

Welcome to The Glasbury, where sophisticated design meets generous living space. The open-plan kitchen, dining, and family area is a highlight, featuring top-tier appliances and a stylish sit-up kitchen bar. French doors flood the space with natural light, seamlessly connecting to the patios and garden. The dedicated utility room ensures efficient organisation, while the adjacent study, with its own set of French doors, serves as a serene workspace. The separate living room offers a cosy retreat with views of the outdoors. On the first floor, the master bedroom is a luxurious retreat with an en suite, complemented by versatile rooms and a family bathroom, crafting a home that merges elegance with practicality.



2,097
Square Feet

195
Square Metres



Aspect

The Glasbury seamlessly blends indoor and outdoor living with feature French doors connecting each living space to the garden. A wrap-around patio gives way to a south-southwest facing garden, perfect for alfresco entertaining. The detached double garage with personnel door access from the garden enhances convenience. Fronting onto a small orchard and open field, this home embodies the perfect harmony of contemporary luxury and tranquil country living.

Glasbury

Specification

Kitchen, Utility

- Custom-painted Wexford kitchen in Midnight Blue with under-cabinet lighting
- Quartz countertop with upstands and under-mount sink to kitchen and utility room
- Island unit NEFF 5-zone induction hob with integrated extraction fan
- Spacious pantry unit
- Undermount sink with Quooker Flex 3-in-1 boiling water tap
- NEFF integrated multi-function oven and microwave
- Fisher & Paykel double dishwasher drawers
- Large utility fully fitted with wall and floor units
- Plumbing and electrics ready for washing machine and tumble dryer

*Quooker 3-in-1
boiling water tap*



Bathroom, En Suites & Cloakroom

- Modern sanitaryware with built-in vanity and Hansgrohe taps
- Free-standing Squaro Edge bath to main bathroom
- Mira showers
- Heated towel ladder radiator
- Porcelanosa ceramic tiling to walls and floor

Interior finishes

- Staircase with ash handrail
- Matt paint finish to walls and ceilings
- Porcelanosa ceramic floor tiles or Herringbone Amtico flooring to kitchen, utility & entrance hall
- Luxury carpets to living room, study, stairs & bedrooms
- Oak pre-finished internal doors with brushed chrome door furniture
- Bespoke fitted wardrobes to bedrooms

*Custom-painted Wexford kitchen
in Midnight Blue*



Heating, electric & lighting

- NIBE air source heat pump
- Wet underfloor heating throughout the ground floor
- Thermostatically controlled radiators to first floor
- Viridian solar panels and battery storage
- Mendip Churchill woodburner with black granite hearth
- Low energy lighting throughout with LED downlights to kitchen, hallway, cloakroom & bathrooms

Exterior finishes

- Electric car charging point
- Landscaped gardens as per approved plan
- Contemporary grey patio and paths
- External waterproof socket and tap to rear elevation
- Detached double garage with power, light and electrically operated sectional garage door
- Natural feather edge cladding

Security & warranty

- Two-year Homeowner warranty from Freeman Homes
- Ten-year structural NHBC warranty
- Multi-point locking mechanisms to external doors
- Security alarm (optional upgrade)





*Custom-painted Wexford kitchen in
Midnight Blue with under-cabinet lighting*



Quooker 3-in-1 boiling water tap



NEFF integrated multi-function oven and microwave



Island unit NEFF 5-zone induction hob with integrated extraction fan



Herringbone Amtico flooring to kitchen, utility & entrance hall



Clever storage solutions throughout, plus a fully shelved pantry and fitted-out boot room



Luxury carpets to living room, study, stairs & bedrooms



Roca vanity units



Mira showers, heated towel radiator & Porcelanosa ceramic tiling to walls and floor



Bespoke fitted wardrobes to bedrooms



Generous garden with contemporary grey patio and paths

Glasbury

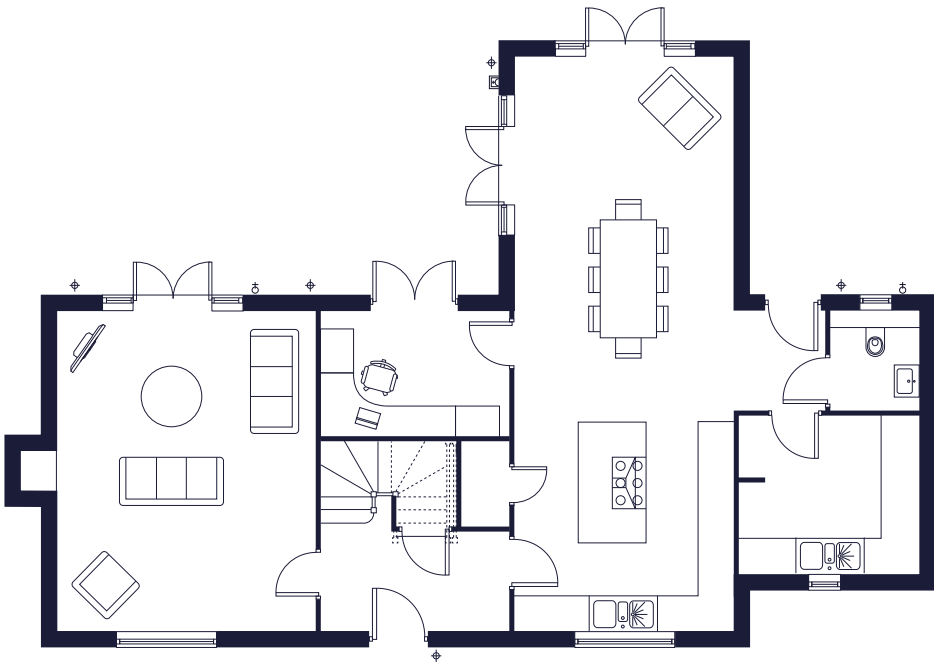
Floor plans

- Exterior Socket
- Light
- Tap

Living Space

2,097
Square Feet

195
Square Metres



GROUND FLOOR

Kitchen/Dining Room

10.12m x 3.82m 33' 3" x 12' 7"

Utility

2.79m x 3.07m 9' 2" x 10' 1"

Living Room

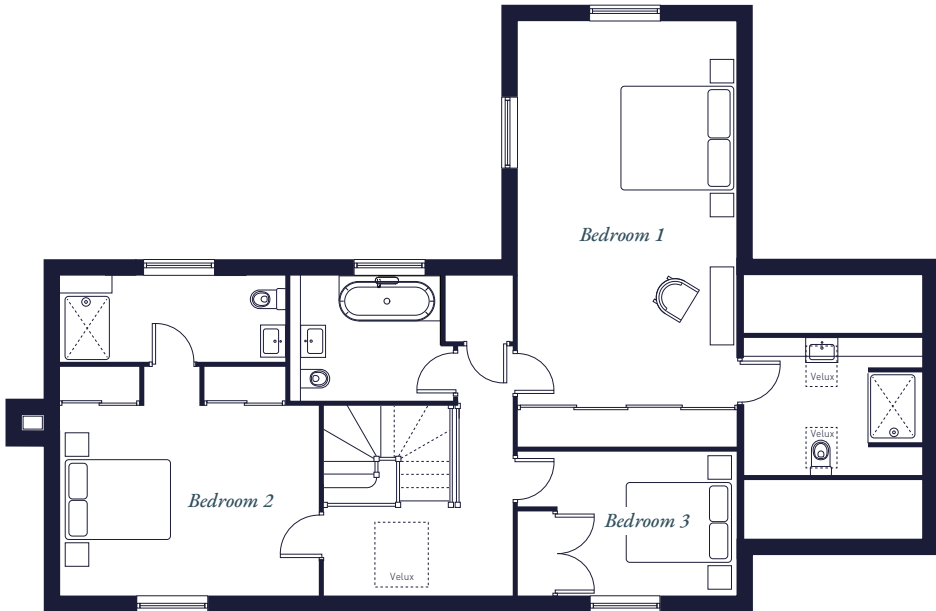
5.62m x 4.56m 18' 5" x 15'

Pantry

1.52m x 0.88m 5' x 2' 11"

Study

2.20m x 3.36m 7' 3" x 11' 0"



FIRST FLOOR

Bedroom 1

7.49m x 3.82m 24' 7" x 12' 6"

Bedroom 2

4.03m x 4.56m 13' 3" x 15'

Bedroom 3

2.54m x 3.82m 8' 4" x 12' 6"



Detached
Double Garage
39 sqm / 419.8 sqft

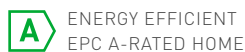
All measurements are approximate and may vary on site. CGIs and images are indicative only and are subject to change.

Whitney

The Whitney greets you with a charming, enclosed porch, perfect for boots and coats, capturing the essence of country living. Inside, the hallway leads to an expansive open-plan kitchen with a return kitchen work surface designed for both practicality and socialising. The adjacent utility, with an external door is ideal for managing muddy boots and paws. The living room spans the depth of the property, featuring dual aspect windows and French doors that open onto the patio and garden, ensuring a light-filled and inviting space. A downstairs study offers a productive work environment, while the extensive first-floor landing and master bedroom, with its luxurious en suite, enhance the feeling of space. Additional rooms with built-in sliding-door wardrobes and a well-designed family bathroom complete this meticulously crafted home.



Living Space



1,677
Square Feet

156
Square Metres



Aspect

The Whitney presents a true south-facing garden and generous patio, capturing as much of the day's sunlight as possible – ideal for green-fingered folk, kings or queens of the BBQ, or slow summer afternoons getting lost in your favourite book, newspaper, or podcast.

Whitney

Specification

Kitchen, Utility

- Custom-painted Waterford kitchen in Black with under-cabinet lighting
- Quartz countertop with upstands to kitchen and utility room
- Deep peninsula unit with NEFF 5-zone induction hob with integrated extraction fan
- Peninsula display storage
- Undermount sink with Quooker Flex 3-in-1 boiling water tap
- NEFF integrated multi-function oven and microwave
- NEFF integrated dishwasher
- Built-in dresser storage to dining area
- Plumbing and electrics ready for washing machine and tumble dryer

*Quooker 3-in-1
boiling water tap*



Bathroom, En Suites & Cloakroom

- Modern sanitaryware with built-in vanity and Hansgrohe taps
- Mira showers to bathroom and ensuite
- Heated towel ladder radiator
- Porcelanosa ceramic tiling to walls and floor

Interior finishes

- Staircase with ash handrail
- Matt paint finish to walls and ceilings
- Herringbone Amtico flooring to kitchen, hall and cloakroom
- Luxury carpets to living room, landing & bedrooms
- Oak pre-finished internal doors with brushed chrome door furniture
- Bespoke fitted wardrobes with soft close sliding doors to master bedroom, bedrooms 2 and 3
- Space for a Stiltz Home Lift to make life easier and help stay in the home you love

Custom-painted Waterford kitchen in Black

Heating, electric & lighting

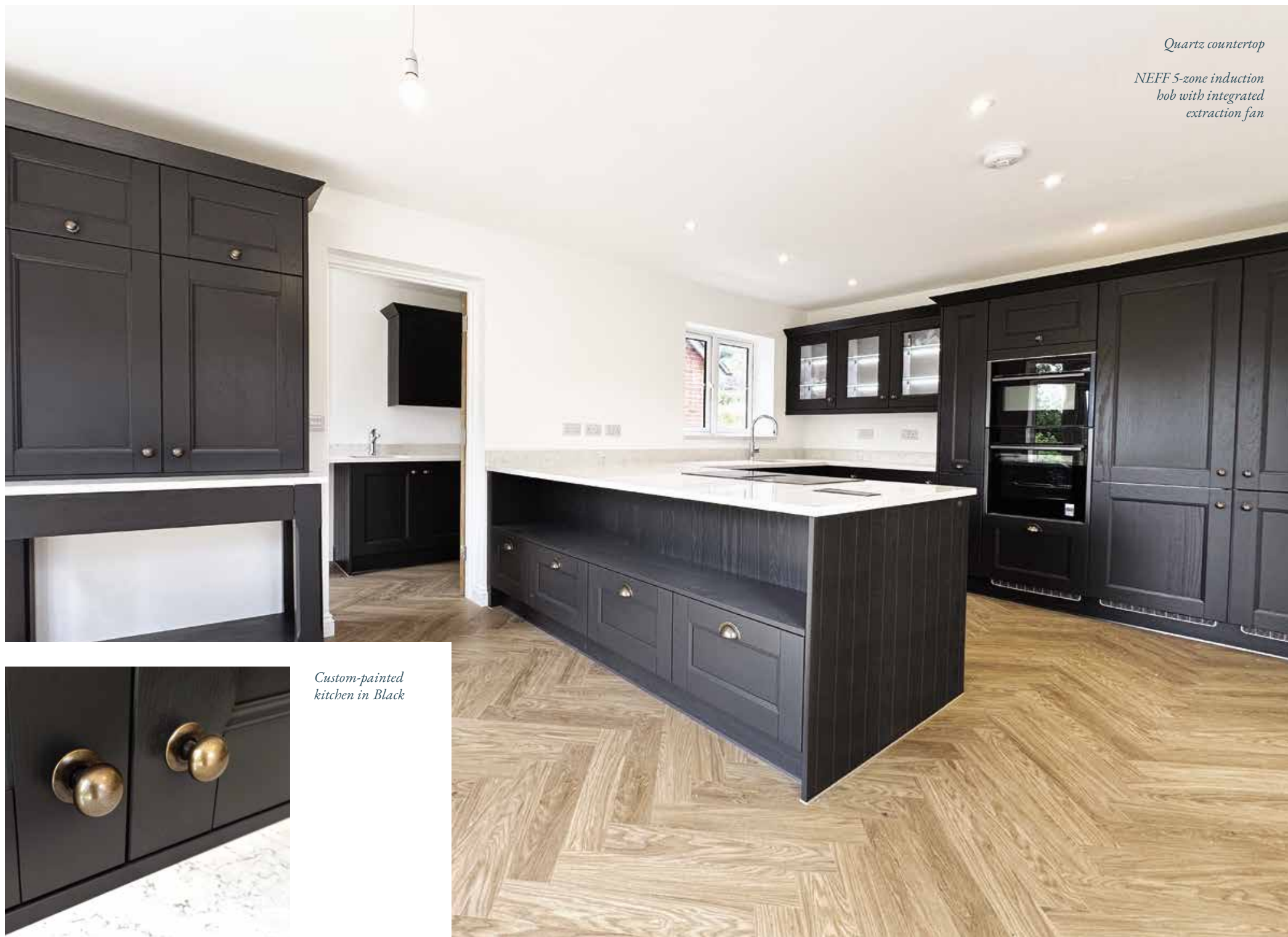
- NIBE air source heat pump
- Wet underfloor heating throughout the ground floor
- Thermostatically controlled radiators to first floor
- Viridian solar panels and battery storage
- Low energy lighting throughout with LED downlights to kitchen, hallway, cloakroom bathrooms

Exterior finishes

- Electric car charging point
- Oversized single garage with power, light and electrically operated door
- Landscaped gardens as per approved plan
- Contemporary grey patio and paths
- External waterproof socket and tap to rear elevation

Security & warranty

- Two-year Homeowner warranty from Freeman Homes
- Ten-year structural NHBC warranty
- Multi-point locking mechanisms to external doors
- Security alarm (optional upgrade)



Quartz countertop

*NEFF 5-zone induction
hob with integrated
extraction fan*



*Custom-painted
kitchen in Black*



Clever storage solutions throughout



Connecting dining area through to the lounge



Generous size entrance hall



Herringbone Amtico flooring



*Modern sanitaryware
with built-in Roca vanity
& Hansgrohe taps*



Mira showers to bathroom and ensuite



Landscaped garden to the rear

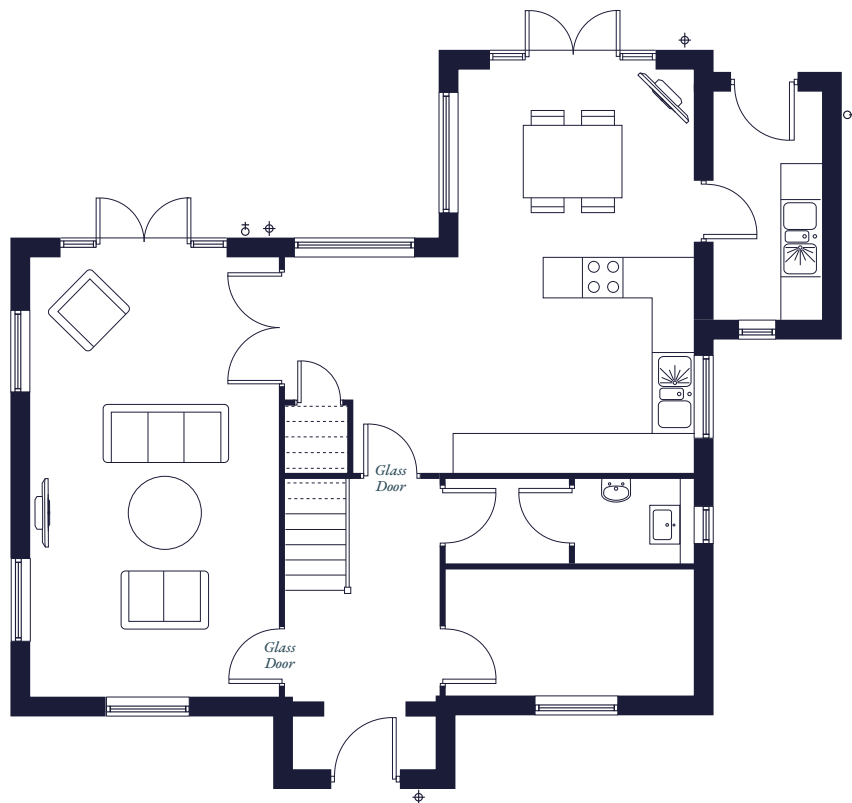
Whitney Floor plans

- Exterior Socket
- Light
- Tap

Living Space

1,677
Square Feet

156
Square Metres



GROUND FLOOR

Kitchen

3.22m x 6.12m 10' 7" x 20' 1"

Dining Room

2.78m x 3.48m 9' 1" x 11' 5"

Utility

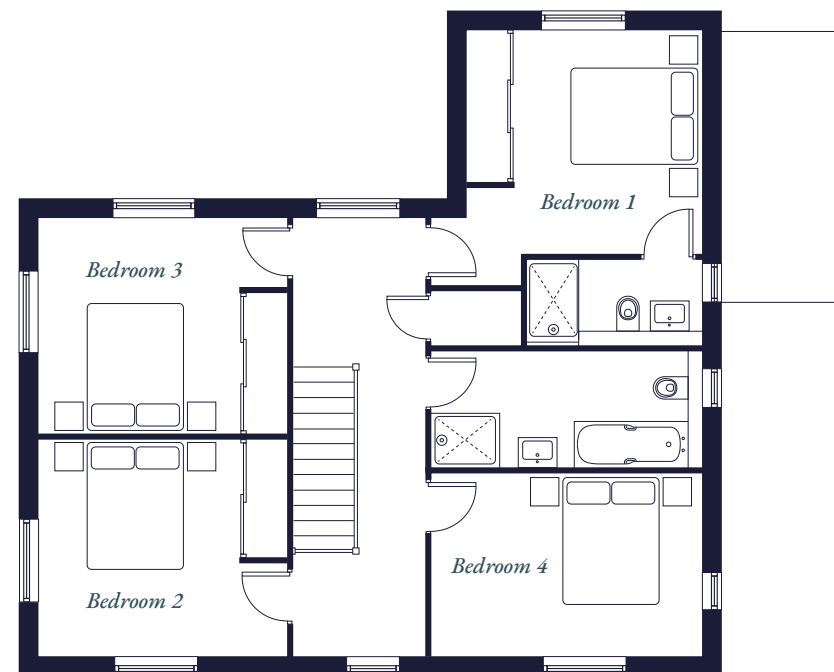
3.37m x 1.58m 11' 1" x 5' 2"

Living Room

6.52m x 3.70m 21' 5" x 12' 2"

Study / Bedroom 5

1.87m x 3.70m 6' 2" x 12' 2"



FIRST FLOOR

Bedroom 1

3.34m x 3.48m 10' 11" x 11' 5"

Bedroom 2

3.22m x 3.70m 10' 7" x 12' 2"

Bedroom 3

3.22m x 3.70m 10' 7" x 12' 2"

Bedroom 4

2.71m x 4.02m 8' 11" x 13' 2"



**Detached
Single Garage**
19 sqm / 204.5 sqft

All measurements are approximate and may vary on site. CGIs and images are indicative only and are subject to change.

Sellack

Welcome to The Sellack, where contemporary design meets functional elegance. The ground floor features a generous dining area bathed in natural light from sliding glass doors, connecting effortlessly to the kitchen and garden. The separate living room provides a bright and relaxing space. A practical utility room offers easy access from outside, keeping laundry and essentials neatly organised. Upstairs, the master suite is a private retreat with a luxurious en suite, while built-in sliding-door wardrobes in three rooms maximise space and enhance the home's sleek design. The versatile fourth room can be adapted as a study or creative space, complemented by a thoughtfully designed family bathroom. The Sellack merges design and functionality to create a refined and purposeful living environment.



Living Space

A ENERGY EFFICIENT
EPC A-RATED HOME

1,390
Square Feet

129
Square Metres



Aspect

The Sellack features a thoughtfully designed layout with ample indoor and outdoor spaces. Expansive glass sliding doors lead to a generous patio and a low-maintenance west-facing garden, ideal for both entertaining and relaxing. Additionally, the property includes a detached single garage with a personnel door, blending convenience with a versatile living experience.

Sellack

Specification

Kitchen, Utility

- Custom-painted Waterford kitchen in Cashmere with under-cabinet lighting
- Integrated eco bins, and Le Mans storage for easy access to corner units
- Quartz countertop with upstands and under-mount sink to kitchen and utility and Hansgrohe chrome tap
- Glazed wall units
- NEFF integrated multi-function oven, microwave and 5-zone induction hob
- NEFF dishwasher
- Full-height larder in utility
- Plumbing and electrics ready for washing machine and tumble dryer

Bathroom, En Suites & Cloakroom

- Modern sanitaryware with Hansgrohe taps
- Built in vanity unit to bathroom
- Mira showers to bathroom and ensuite
- Heated towel ladder radiator
- Porcelanosa ceramic tiling to walls and floor to bathroom and ensuite

Interior finishes

- Staircase with ash handrail
- Matt paint finish to walls and ceilings
- Herringbone Amtico flooring to kitchen, hall and cloakroom
- Luxury carpets to living room, landing and bedrooms
- Oak pre-finished internal doors with brushed chrome door furniture
- Bespoke fitted wardrobes with soft close sliding doors to bedrooms 1, 2 and 3

Custom-painted Waterford kitchen in Cashmere

Heating, electric & lighting

- NIBE air source heat pump
- Wet underfloor heating throughout the ground floor
- Thermostatically controlled radiators to first floor
- Viridian solar panels and battery storage
- Low energy lighting throughout with LED downlights to kitchen, hallway, cloakroom and bathrooms

Exterior finishes

- Electric car charging point
- Landscaped gardens as per approved plan
- Contemporary grey patio and paths
- External waterproof socket and tap to rear elevation
- Single garage with power, light and electrically operated garage door

Security & warranty

- Two-year Homeowner warranty from Freeman Homes
- Ten-year structural NHBC warranty
- Multi-point locking mechanisms to external doors
- Security alarm (optional upgrade)

*Custom-painted Waterford kitchen in
Cashmere with under-cabinet lighting
and quartz countertops*





NEFF integrated multi-function oven, microwave and 5-zone induction hob



Generous garden with contemporary grey patio and paths



Open plan kitchen diner with double sliding doors to patio



Utility with full-height larder





Modern sanitaryware with Hansgrohe taps



Built in Roca vanity unit



Bespoke fitted wardrobes with soft close sliding doors to bedrooms 1, 2 and 3



Sellack

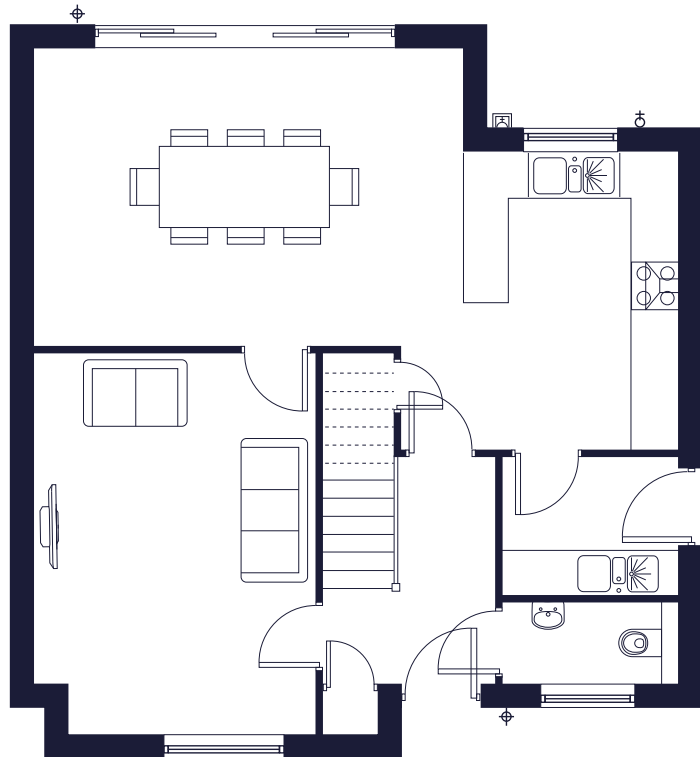
Floor plans

- Exterior Socket
- Light
- Tap

Living Space

1,390
Square Feet

129
Square Metres



GROUND FLOOR

Kitchen

3.91m x 2.81m 12' 10" x 9' 3"

Dining Room

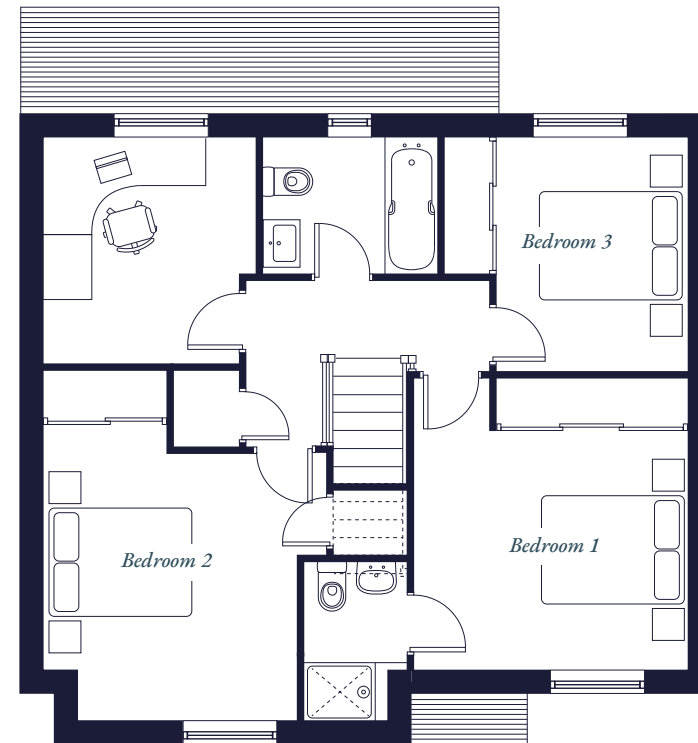
3.90m x 5.62m 12' 10" x 18' 5"

Utility

1.84m x 2.30m 6' 0" x 7' 7"

Living Room

5.01m x 3.69m 16' 5" x 12' 2"



FIRST FLOOR

Bedroom 1

3.80m x 3.59m 12' 6" x 11' 9"

Bedroom 2

3.50m x 3.31m 11' 6" x 10' 10"

Bedroom 3

3.08m x 2.50m 10' 1" x 8' 2"

Study

2.97m x 2.76m 9' 9" x 9' 1"



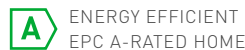
**Detached
Single Garage**
19 sqm / 204.5 sqft

Wilton

Enter The Wilton and experience a home that harmonises luxury with practicality. The ground floor features an open-plan kitchen and dining area, blending high-end appliances with elegant design elements. French doors lead to a charming patio and garden, perfect for relaxed dining and entertaining. Adjacent, a separate utility room provides discreet laundry management with external access for added convenience. The generous living room, spanning the depth of the property, continues the theme of light and space, with French doors opening to the patio and garden. Upstairs, the master with en suite is a serene space, complemented by two additional rooms, one with built-in sliding-door wardrobes and a versatile third room. A well-appointed family bathroom ensures comfort throughout the home. The Wilton showcases quality and thoughtful design.



Living Space



1,032
Square Feet

96
Square Metres



Aspect

The Wilton features a patio connected to wrap around paving, seamlessly connecting to a low-maintenance garden bordered by native hedging. The front landscaped garden adds to the charm, while a detached single garage with a personnel door and off-road parking provides convenience. The well-designed layout enhances the appeal of this countryside retreat.

Wilton

Specification

Kitchen, Utility

- Princeton shaker kitchen in Chalk White with under-cabinet lighting
- Quartz countertop with upstands and under-mount sink to kitchen and utility
- Full height larder
- Undermount sink with Hansgrohe chrome tap
- NEFF integrated multi-function oven, microwave and ceramic hob
- NEFF dishwasher
- Plumbing and electrics ready for washing machine and tumble dryer

Bathroom, En Suites & Cloakroom

- Modern sanitaryware with Hansgrohe taps
- Mira showers to bathroom and ensuite
- Heated towel ladder radiator
- Porcelanosa ceramic tiling to walls and floor to bathroom and ensuite

Interior finishes

- Staircase with ash handrail
- Matt paint finish to walls and ceilings
- Herringbone Amtico flooring to kitchen, hall and cloakroom
- Luxury carpets to living room, landing and bedrooms
- Oak pre-finished internal doors with brushed chrome door furniture
- Bespoke fitted wardrobes with soft close sliding doors to master and second bedrooms

Princeton shaker kitchen in Chalk White

Heating, electric & lighting

- NIBE air source heat pump
- Wet underfloor heating throughout the ground floor
- Thermostatically controlled radiators to first floor
- Viridian solar panels and battery storage
- Low energy lighting throughout with LED downlights to kitchen, hallway, cloakroom and bathrooms

Exterior finishes

- Electric car charging point
- Landscaped gardens as per approved plan
- Contemporary grey patio and paths
- External waterproof socket and tap to rear elevation
- Single garage with electrically operated garage door

Security & warranty

- Two-year Homeowner warranty from Freeman Homes
- Ten-year structural NHBC warranty
- Multi-point locking mechanisms to external doors
- Security alarm (optional upgrade)



Princeton shaker kitchen in Chalk White with under-cabinet lighting

NEFF integrated multi-function oven, microwave and ceramic hob

Quartz countertop with upstands and under-mount sink to kitchen and utility



Utility, opening to rear garden



Fully integrated dishwasher



Clever storage solutions throughout



*Modern sanitaryware with Hansgrohe taps, Mira showers to bathroom and ensuite
 & heated towel radiator*



*Bespoke fitted wardrobes with soft close sliding
 doors to master and second bedrooms*



Electric car charging point



*Open countryside views to
 the rear of the property*



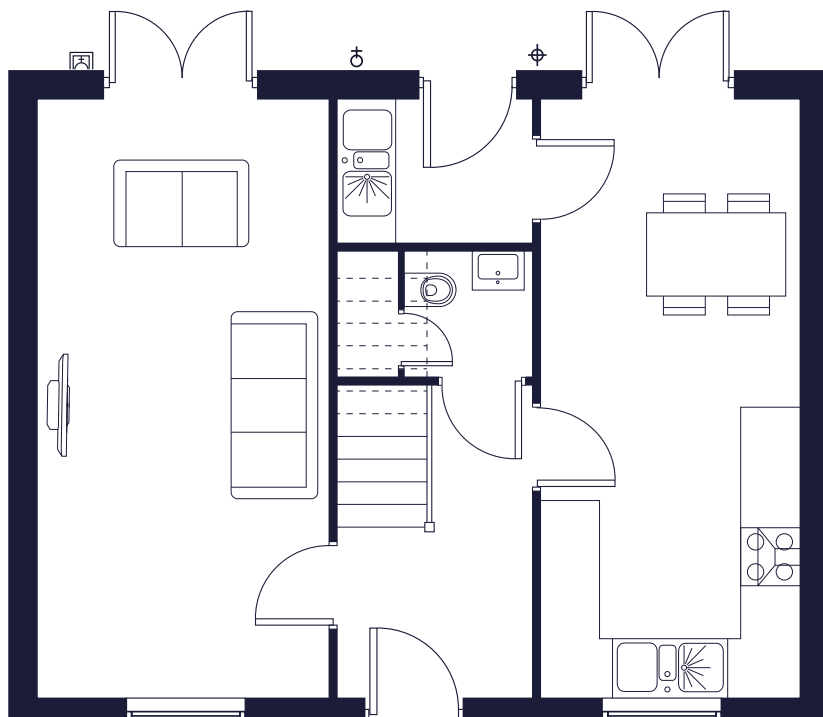
Wilton Floor plans

- Exterior Socket
- Light
- Tap

Living Space

1,032
Square Feet

96
Square Metres



GROUND FLOOR

Kitchen/Dining Room

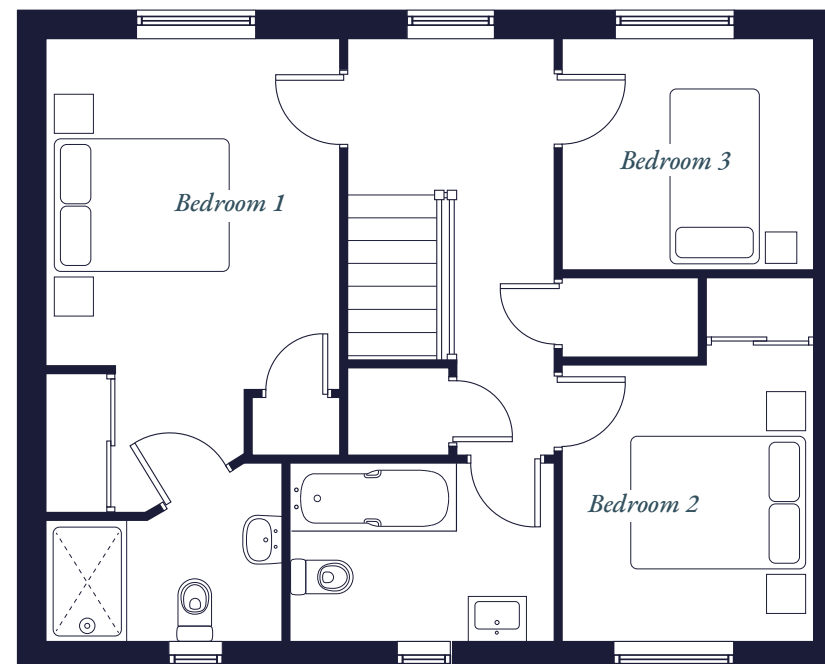
6.18m x 2.66m 20' 3" x 8' 8"

Utility

1.48m x 2.03m 4' 10" x 6' 8"

Living Room

6.18m x 3.00m 20' 3" x 9' 10"



FIRST FLOOR

Bedroom 1

4.29m x 3.00m 14' 1" x 9' 10"

Bedroom 2

3.72m x 2.57m 12' 3" x 8' 5"

Bedroom 3

2.35m x 2.57m 7' 9" x 8' 5"



Single Garage

19 sqm / 204.5 sqft

Kerne

Welcome to The Kerne, where luxury and practicality merge in a thoughtfully designed home. The ground floor opens to a generous kitchen and dining area, featuring top-tier appliances and French doors leading to a picturesque patio and garden. A separate utility ensures laundry and outdoor essentials are neatly managed, while the expansive living room, spanning the property's depth, offers a bright retreat with French doors extending to the garden. On the first floor, the master suite provides a luxurious escape with its en suite, complemented by an additional room with built-in sliding-door wardrobes, and a versatile third room. The family bathroom adds convenience and style, making The Kerne a harmonious blend of high-quality living and functional design.



Living Space

A ENERGY EFFICIENT
EPC A-RATED HOME

1,032
Square Feet

96
Square Metres



Aspect

The Kerne's west-facing garden is ideal for sunny afternoons and evenings spent on the patio with friends and family. As the sun sets, light a fire pit and savour moments in this ample outdoor space, perfect for relaxing and star-gazing under a blanket.

Kerne

Specification

Kitchen, Utility

- Bespoke Urban kitchen in Fern with under-cabinet lighting
- Quartz countertop with upstands and under-mount sink to kitchen and utility
- Full height larder
- Undermount sink with Hansgrohe chrome tap
- NEFF integrated multi-function oven, microwave and ceramic hob
- NEFF dishwasher
- Plumbing and electrics ready for washing machine and tumble dryer

Bathroom, En Suites & Cloakroom

- Modern sanitaryware with Hansgrohe taps
- Mira showers to bathroom and ensuite
- Heated towel ladder radiator
- Porcelanosa ceramic tiling to walls and floor to bathroom and ensuite

Interior finishes

- Staircase with ash handrail
- Matt paint finish to walls and ceilings
- Herringbone Amtico flooring to kitchen, hall and cloakroom
- Luxury carpets to living room, landing and bedrooms
- Oak pre-finished internal doors with brushed chrome door furniture
- Bespoke fitted wardrobes with soft close sliding doors to master and second bedrooms



Bespoke Urban kitchen in Fern

Heating, electric & lighting

- NIBE air source heat pump
- Wet underfloor heating throughout the ground floor
- Thermostatically controlled radiators to first floor
- Viridian solar panels and battery storage
- Low energy lighting throughout with LED downlights to kitchen, hallway, cloakroom and bathrooms

Exterior finishes

- Electric car charging point
- Landscaped gardens as per approved plan
- Contemporary grey patio and paths
- External waterproof socket and tap to rear elevation
- Single garage with electrically operated garage door

Security & warranty

- Two-year Homeowner warranty from Freeman Homes
- Ten-year structural NHBC warranty
- Multi-point locking mechanisms to external doors
- Security alarm (optional upgrade)



*Bespoke Urban kitchen in Fern
with under-cabinet lighting*

*NEFF integrated multi-function oven,
microwave and ceramic hob*

*Quartz countertop with upstands and
under-mount sink to kitchen and utility*



French doors from the kitchen diner opening to the rear garden



Quartz countertop with upstands and undermount sink to kitchen and utility



French doors to the living room, opening to rear garden



Clever storage solutions throughout



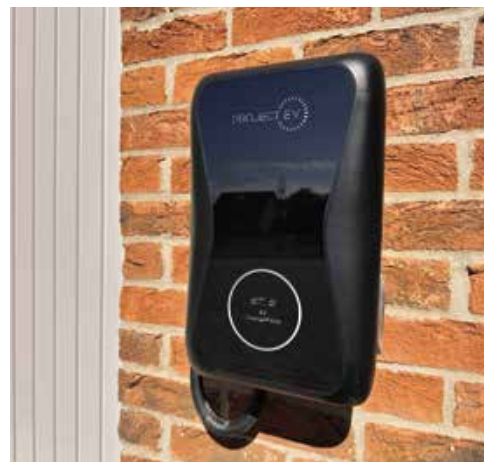
Utility opening to rear garden



*Modern sanitaryware with Hansgrohe taps, Mira showers to bathroom and ensuite
& heated towel radiator*



Large rear garden, perfect for entertaining



Electric car charging point



Bespoke fitted wardrobes with soft close sliding doors to master and second bedrooms

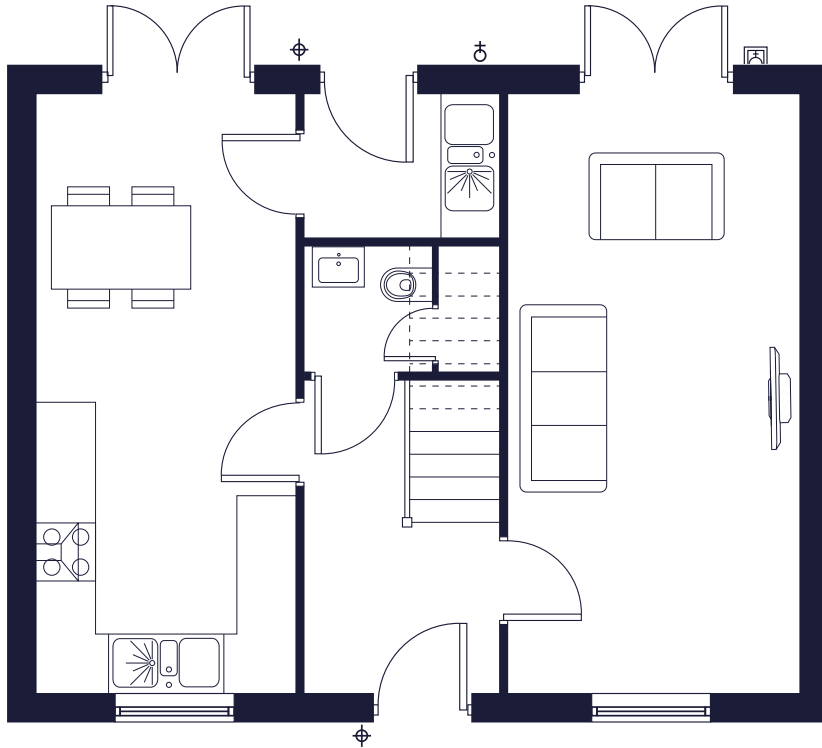
Kerne Floor plans

- Exterior Socket
- Light
- Tap

Living Space

1,032
Square Feet

96
Square Metres



GROUND FLOOR

Kitchen/Dining Room

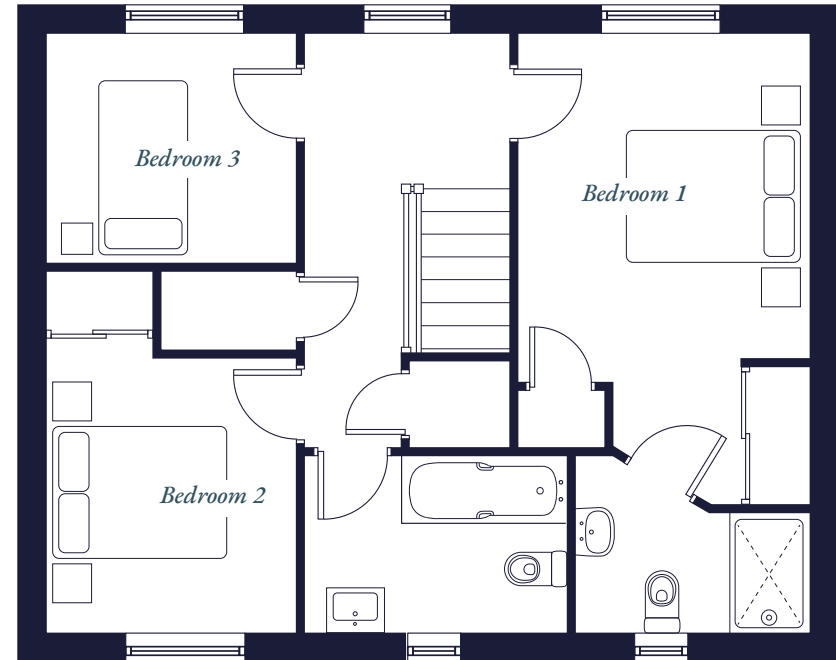
6.18m x 2.66m 20' 3" x 8' 8"

Utility

1.48m x 2.03m 4' 10" x 6' 8"

Living Room

6.18m x 3.00m 20' 3" x 9' 10"



FIRST FLOOR

Bedroom 1

4.29m x 3.00m 14' 1" x 9' 10"

Bedroom 2

3.72m x 2.57m 12' 3" x 8' 5"

Bedroom 3

2.35m x 2.57m 7' 9" x 8' 5"



Single Garage
19 sqm / 204.5 sqft

Looking after the things we love and care about



FreemanHomes



Sustainable materials

We adopt a fabric-first approach to design, partnering with market-leading brands and local suppliers to maximise the property energy performance. Herefordshire-based Taylor Lane's timber frame construction utilises timber sourced from certified managed forests, offering the lowest CO₂ cost and heightened thermal efficiencies.



Zero Carbon Living

In addition to our sustainable designs, NIBE air source heat pumps and Viridian roof-integrated solar PV panels enable us to present zero-carbon, EPC A-rated properties with significantly lower running costs.



Ecology

Wildlife-friendly features such as hedgehog-friendly fencing, bird and bat nesting boxes, and bee bricks provide a place for people and nature. Ecology landscaping and wildlife buffer zones boost biodiversity.

Protecting our environment

Three Willows creates a place for people and nature. In addition to our sustainable design, materials selection, renewable technologies and wildlife-friendly features, we support The Wye Valley Society's Dark Skies Project. This reduces light pollution, but also makes for spectacular star-gazing on a clear night.

We align ourselves and our homes with 7 of the United Nations' Sustainable Development Goals to ensure we have a positive impact locally, and worldwide



From our family, to yours...

Spacious Living

Freeman Homes is renowned for generously proportioned properties, designed to evolve and be a pleasure to live in for many years to come.

Abundant Storage

Our homes feature an abundance of built-in storage throughout, providing ample space to keep your most cherished possessions - a detail that consistently earns praise from our satisfied customers.

Uncompromising Quality

Quality is synonymous with Freeman Homes. We build the entire homes ourselves from the ground up, ensuring they meet our own exacting standards.

Peace of Mind

All of our homes come with a two-year homeowner warranty from Freeman Homes, and 10-year structural NHBC warranty. Our dedicated and friendly customer care team is always ready to assist with any questions or support needed.

Outstanding Customer Service

We prioritise our customers in every step of the process. From design and construction to handover, we strive to make your experience as stress-free and enjoyable as possible. We take the time to listen to and understand your needs, making it a truly personalised journey.

Award-Winning Excellence

Our growing collection of awards for design and innovation is a testament to our unwavering commitment to quality and placing sustainability at the heart of what we do. When you choose Freeman Homes, you can be confident you're investing in the very best.



Building for a better future

At Freeman Homes, we recognise that the way we live is constantly evolving, so we are more committed than ever to building for a better future. Our homes provide generous spaces for working, relaxing, and enjoying leisure activities. Set in picturesque countryside, connect with nature from your doorstep and enjoy the convenience of village life and amenities, with easy access to excellent transport links.

We are a second-generation, family-owned business with a heritage dating back to 1966. Our commitment to excellence remains true to the values upon which our company was founded.

Family is at the heart of everything we do, and we take pride in creating homes where treasured memories are made. We are passionate about the stunning landscapes where we build, actively seeking exceptional locations for lifestyles of choice.



 Circular Walk, Fownhope

Start your
lifestyle
experience

FreemanHomes

The background of the image features a large, stylized leaf graphic in a light gray color, set against a darker gray background. The leaf has multiple veins and a wavy, organic shape. The Freeman Homes logo is centered over the leaf.

FreemanHomes

ASPIRATIONAL HOMES, DESIRABLE LOCATIONS



FreemanHomes

ENERGY-EFFICIENT
EPC A-RATED HOMES

Start your lifestyle experience

01594 543354

fownhope@freemanhomes.co.uk

www.freemanhomes.co.uk

FreemanHomes

A division of the MF Freeman Group



 what3words

pavilions.position.gathers

Three Willows, Fownhope, Herefordshire HR1 4FS