



FreemanHomes

ENERGY-EFFICIENT
EPC A-RATED HOMES



OAKFIELDS

CREDENHILL. HEREFORDSHIRE

By FreemanHomes

LOW
CARBON
HOMES





FreemanHomes

ENERGY-EFFICIENT
EPC A-RATED HOMES

WELCOME TO



OAKFIELDS

CREDENHILL, HEREFORDSHIRE

A unique collection of energy efficient, low carbon properties in the Herefordshire village of Credenhill. Oakfields presents homes with attractive exteriors and spacious internal layouts, that feature a high specification to include renewable energy technologies from market-leading brands.

Enjoy the best of both worlds from an enviable position nestled at the foot of Credenhill, where oak trees frame iconic Herefordshire countryside views; yet these homes are a stone's throw from the vibrant Cathedral City centre of Hereford.

FreemanHomes

SPACE TO LIVE

Each property at Oakfields has been thoughtfully designed with your comfort, convenience and enjoyment in mind. We have partnered with leading architects to curate a development that brings together a choice of flexible property layouts and generous outdoor areas, ensuring there is no shortage of space inside or out. A superior specification presents luxury features, appliances and technologies, chosen to create modern homes that are predicted to achieve A-rated energy assessments without compromising on design or style.

At Oakfields, we have positioned the properties to make the most of the surrounding countryside and drawn inspiration from local architecture to design homes that complement the area's existing style and aesthetic.

For those who reserve early, we offer the opportunity to further personalise your new home, from kitchen cabinets and flooring finishes to additional security and sustainable features. Our Freeman Choice range of options will help you make your new property feel like home before you've unpacked the first box.

Talk to our friendly team and let us tell you more about the properties and surrounding area.

We look forward to meeting you.



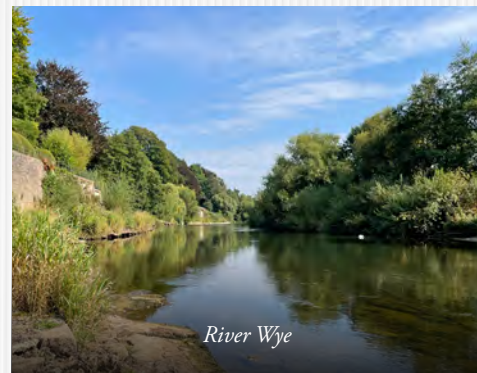
Luke Freeman
Chief Executive



OAKFIELDS



Open countryside views around Credenhill



River Wye



Woodland walks

Herefordshire countryside views

FreemanHomes

SAY HELLO TO
ICONIC HEREFORDSHIRE
COUNTRYSIDE VIEWS



OAKFIELDS

A WELL-CONNECTED COMMUNITY



Hereford

4.5 miles
10 minute drive

Hay-on-Wye

17 miles
30 minute drive

Ledbury

25 miles
46 minute drive

Cardiff

62 miles
1 hr 30 minute drive

Bristol

70 miles
1 hr 30 minute drive

Birmingham

62 miles
1 hr 40 minute drive

Distances and times are approximate



FreemanHomes

SAY HELLO TO
RIVERSIDE WALKS AND LOCAL
NATIONAL TRUST SITES



OAKFIELDS

WHAT'S NEARBY

Eat & Drink

Herefordshire is famed for its local produce and boasts a vibrant foodie scene to feast within. Locally brewed ales, ciders, and cocktails mixed with tipples from local distilleries can be found in most eateries. Credenhill is only a short distance from the centre of Hereford City, where some of our favourite places include The Bookshop and their famous steak-led menu; award-winning burgers at The Beefy Boys and The Burger Shop; Instagram worthy brunches and lunches at Sensory & Rye and Rocket; and coffee and homemade cake next to the river at De Koffie Pot. You will also find the surrounding area and neighbouring villages are peppered with notable country pubs, restaurants and cafés.

Shopping

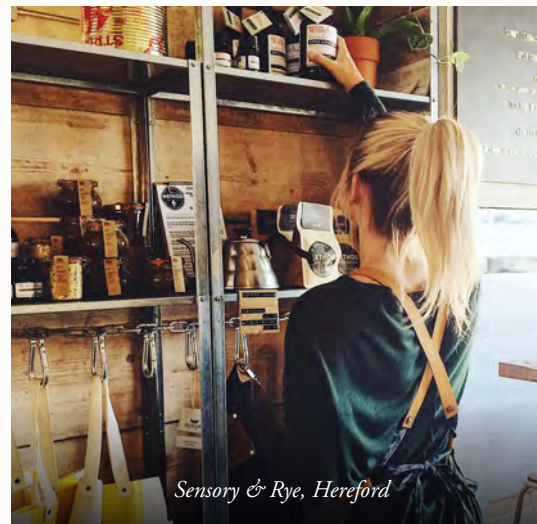
Hereford offers a mix of popular high street brands and an ever-growing number of independent shops across the town. Explore cobbled streets for hidden gems, or head to the Old Hereford Market where you will find everything in one place, including a Waitrose supermarket and Odeon cinema. There are multiple supermarkets to choose from and a Marks & Spencer Foodhall can be found in the centre of town. Whether you've got green fingers or are looking for some garden inspiration and advice, Hereford Garden Centre is just a mile down the road from Oakfields, where it also houses a café restaurant and pet shop.



The Hereford, Bar and Brasserie at The Green Dragon Hotel



Hereford Old Market



Sensory & Rye, Hereford



Hereford



Arts & Culture

Museums and attractions are abundant in Herefordshire. The Courtyard in Hereford is a centre for the arts and stages touring shows and in-house productions; Hereford Cathedral hosts notable events and exhibitions and is home of the Mappa Mundi and the Chained Library; whilst The Museum of Cider tells the tale of apples in Herefordshire. The county is also home to an impressive range of seasonal festivals and events to be enjoyed by all the family.



Hereford Cathedral, exhibitions

Health & Wellbeing

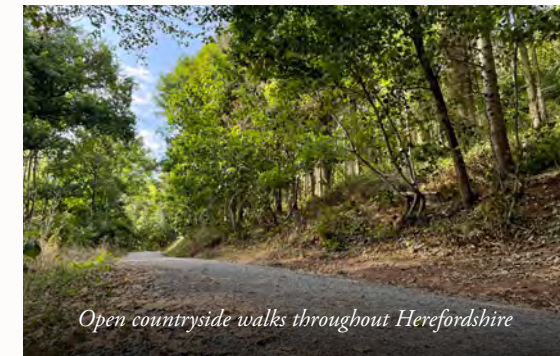
In addition to the sprawling countryside scenery, you can enjoy all manner of indoor activity. The region is well served with leisure centres, gyms and indoor activities that are never too far away. Dive into a pool at Herefordshire Leisure Centre; sign up to a beginner's climbing or bouldering course at Green Spider Climbing Centre; or treat yourself to a spa treatment at Holmer Park Health Club & Spa.

Get Outdoors

From Oakfields you can explore parish trails and the rich history of the area on foot. There is a public footpath running through the fields directly behind Oakfields where you can enjoy expansive Herefordshire views. The nearby Credenhill Park Wood is managed by the Woodland Trust and is steeped in history with a past as a Roman army depot, medieval deer park and the site of an Iron Age tribal centre. It features a range of paths, views of the Black Mountains and stunning woodland flowers; this special wildlife site is brimming with a wide range of woodland animals. You can also find geocaches in the woods to keep little ones entertained. Less than 2 miles away, The National Trust Weir Garden is a peaceful place to enjoy the picturesque River Wye, where seventy species of bird have been spotted as well as the odd otter sighting.

Education

Credenhill is home to St Mary's C of E Primary School which continues to hold a good rating. The village also sits within the catchment area of numerous high-performing high schools to include the Ofsted Outstanding St Mary's RC High School in Hereford, and Hereford Cathedral School which is an outstanding independent school for nursery to sixth form age.



Open countryside walks throughout Herefordshire



Credenhill Park, Managed by the Woodland Trust



National Trust, Weir Garden



FreemanHomes

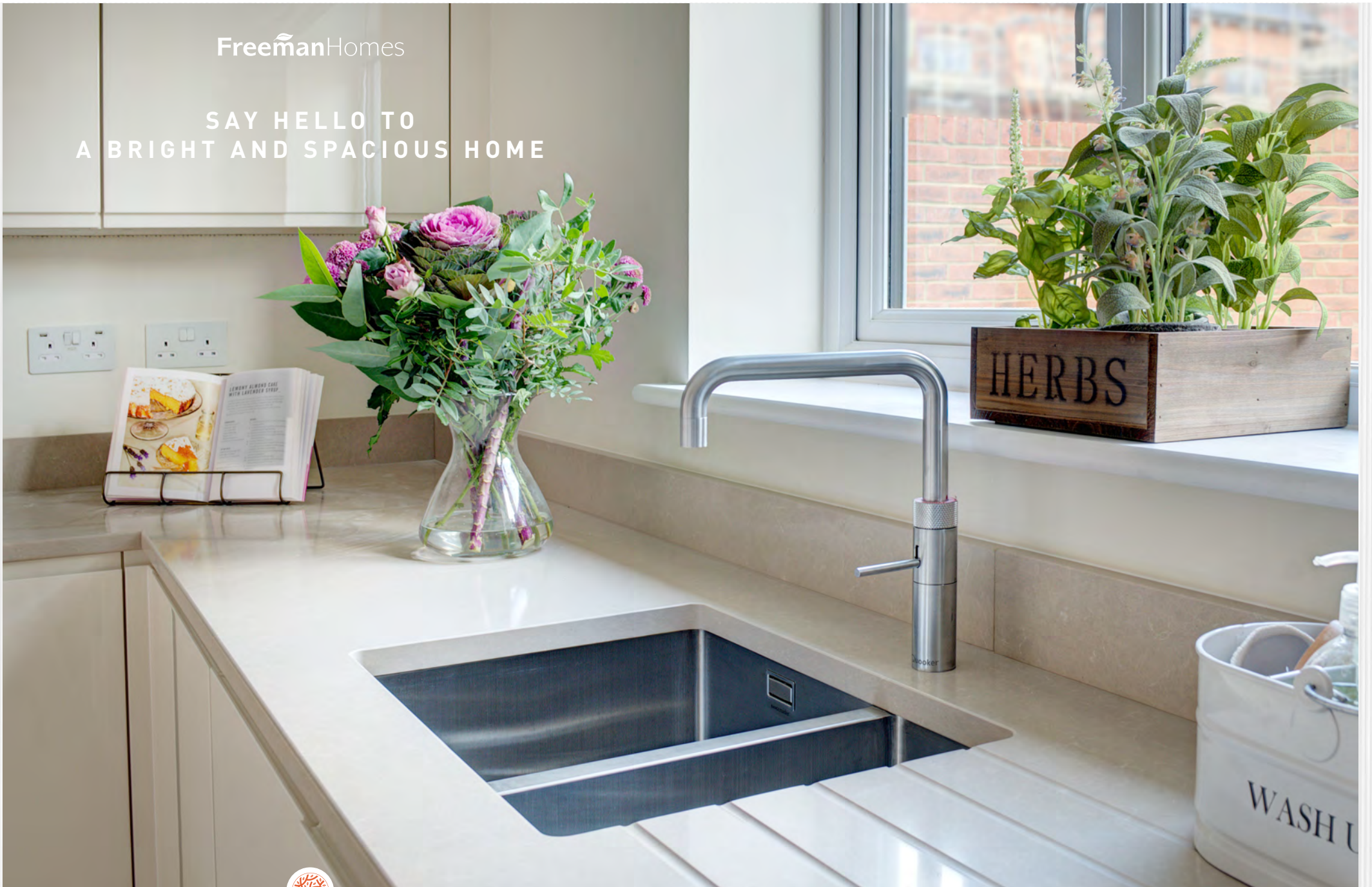
SAY HELLO TO
NEW ADVENTURES AND
DISCOVER WHAT'S ON
YOUR DOORSTEP



OAKFIELDS

FreemanHomes

SAY HELLO TO
A BRIGHT AND SPACIOUS HOME



OAKFIELDS

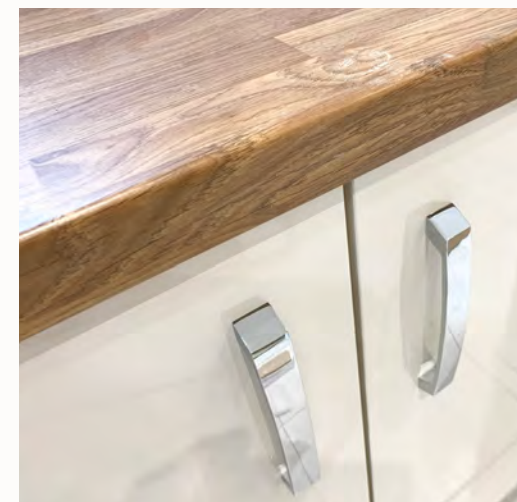
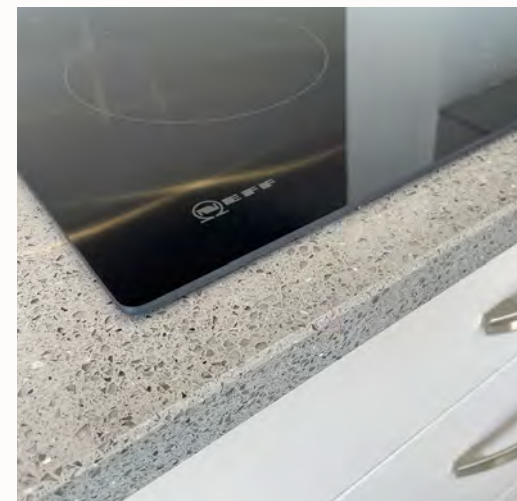
OUR SIGNATURE SPECIFICATION

Let your personality shine through in your new home with the Freeman Choice of options and upgrades. We will talk you through the items available and offer more detailed information to assist with decision making, helping you to personalise your home.

The homes at Oakfields feature the Freeman Homes' signature specification, combining meticulous attention to detail with premium branded appliances, technologies and products.

Kitchen

- Beautifully designed, fully fitted Symphony kitchen
- Soft close doors and drawer units with integrated cutlery tray
- Choice of worktops with matching upstand (subject to build stage)
- NEFF integrated single oven
- Integrated dishwasher
- Integrated 70/30 fridge freezer
- NEFF ceramic hob, stainless steel splashback and cooker hood
- Utility room with space for one or two appliances (as design dictates)

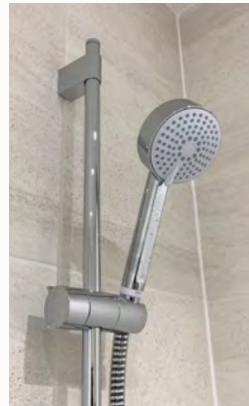


Symphony®



Bathroom, En suite and Cloakroom

- White Villeroy and Boch sanitaryware
- Hansgrohe chrome fittings
- Mira Evoco shower with low profile shower tray to bathrooms and en suites
- Underfloor heating to bathrooms and en suites
- Classic straight towel rail in chrome to bathrooms and en suites
- Shaver socket to bathrooms and en suites
- Porcelanosa half-height tiles with full-height wall tiles to shower enclosure and bath



Finishes

- Natural wool mix carpet carpet to stairs, landing, bedrooms, hall and living room
- Comfytex flooring to kitchen
- Fitted wardrobes with sliding doors to bedrooms (as design dictates)
- Natural stained ash handrail
- Internal walls and ceilings finished in Crown White
- Internal woodwork finished in Crown Brilliant White
- uPVC windows, patio, utility, and garage personnel doors
- Bowater Maple natural grained front door with clear glass
- Glazed sliding doors or French patio doors leading to patio and garden
- Oak Veneer Prefinished doors on 4 and 5 bed house types, upgrade available on 2 & 3 bed house types

Safety and Security

- External multi-point locking door with thumb lock
- Window locks
- In-door viewer with security chain

Energy-efficient Heating, Lighting & Electrical

- Viridian roof integrated Solar PV panels (option available for battery storage - 5.0 kWh)
- NIBE Air Source Heat Pump
- Project EV 7.3kW electric car charging point
- Underfloor heating and/or Stelrad Compact radiators (as design dictates)
- Low energy downlights and pendant lighting (as design dictates)
- Ample sockets throughout, including BT point in living room
- TV points to kitchen, living room and all bedrooms
- USB charging port sockets to kitchen and master bedroom
- Satin chrome push door bell
- Pendant light to loft

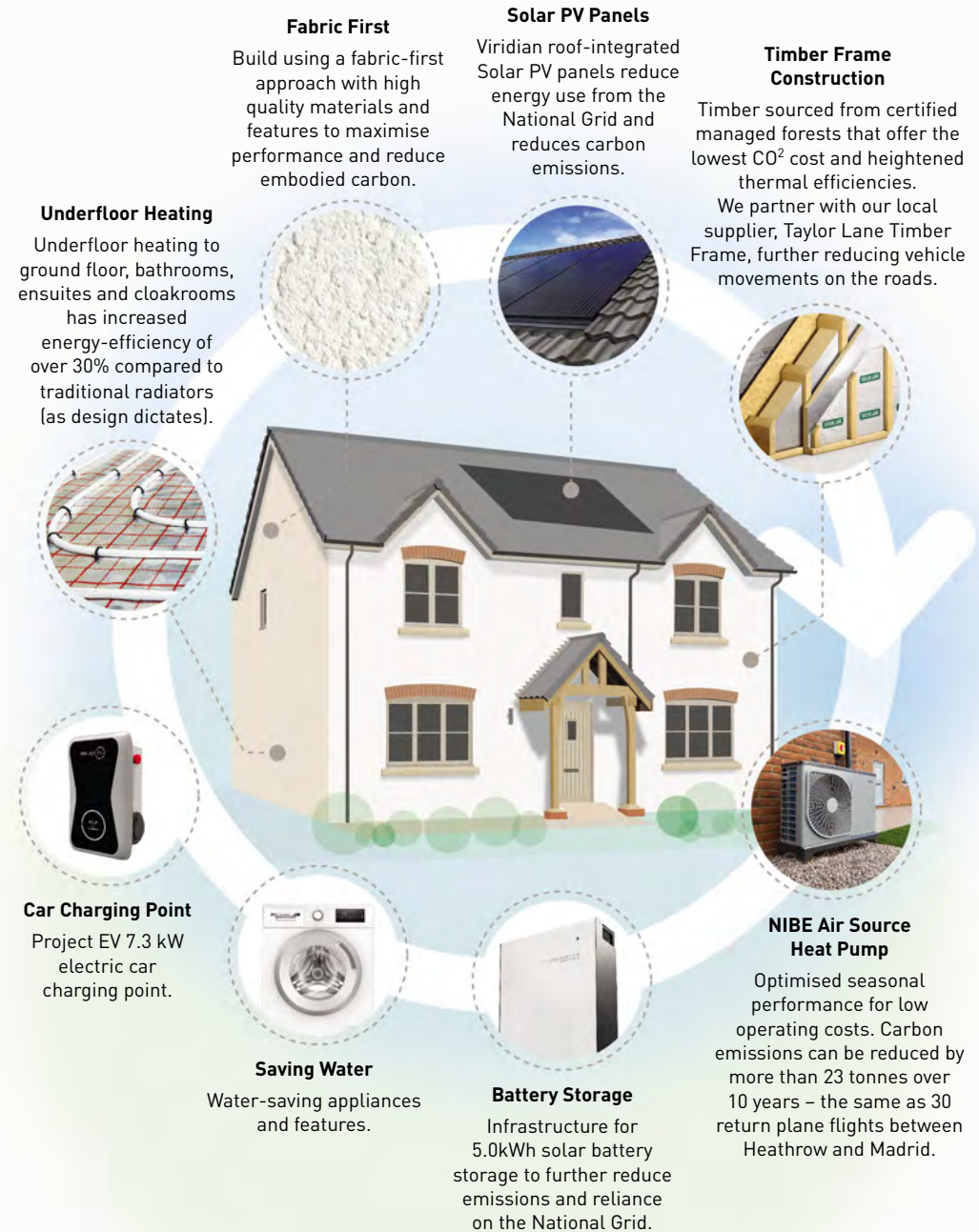


EPC A - RATED HOMES

Low-carbon, sustainable features

Our approach to sustainability is about carefully considering the future and ensuring that we build communities that create a positive impact. We adopt a fabric-first approach to design, partnering with market-leading renewable technology brands to maximise energy performance, reduce carbon emissions, and lower embodied carbon. The result is an EPC A-rated property with significantly lower running costs*

*HBF Watt a Save Report July 2023



Environmental Details 

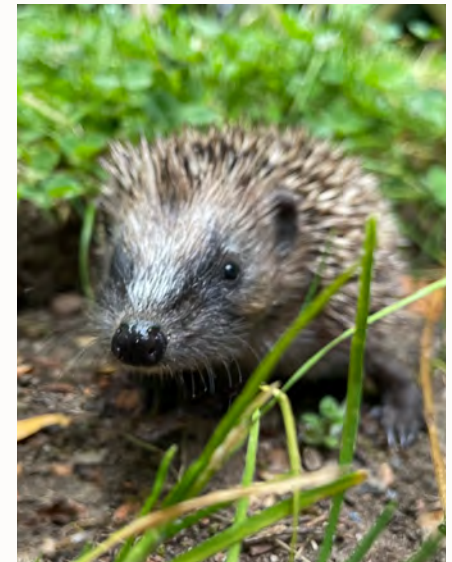
Development predicted to achieve A-rated energy assessment

Market leading renewable energy technologies

- Hedgehog-friendly fencing allows hedgehogs to roam freely in search of food and mates
- Hedgehog houses within the shared open areas provide shelter and somewhere to nest
- Bird boxes provide a home for nesting birds, and bat boxes provide a place for bats to roost
- Bee bricks for nesting solitary bees
- Significant ecology landscape planting
- Dual flush mechanism to toilets to reduce water use
- Double-glazed windows providing a high level of thermal insulation and reduced heat loss
- High levels of insulation within roof spaces and external wall cavities, to limit heat loss in the winter and reduce heat gain in the summer
- Significant recycling of waste materials and packaging during the construction of each home
- Rainwater butt and garden composting bin

Garden & Garage

- Lighting and double power socket to garage
- Up and over garage door
- External tap
- Landscaping to front garden and turf to back garden
- External, low-level, wildlife-friendly lights to front and back of property
- Patio to rear garden



Stay connected at home

With fast broadband, everyone in the house can be online, keeping in touch with friends and family, working from home, watching Netflix, and doing the weekly shop, all at the same time.

Credenhill benefits from fibre enabled broadband. The village also falls under Fastershire, which is a partnership between Herefordshire Council and Gloucestershire County Council, that is bringing even faster broadband to the two counties. This means you can upgrade to ultrafast fibre through your provider and access broadband speeds of up to 1,000Mbps. For more information visit www.fastershire.com.

Space to work from home

Whether it's a downstairs study, upstairs study, spare room converted into a home office, or a dedicated corner of a spacious open plan layout, we have a wide range of designs to suit your work from home style. Better still, inspire productivity and put your own stamp on your work-friendly space.



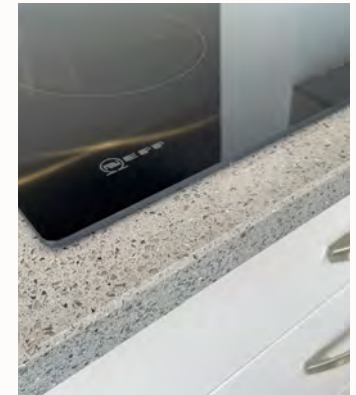
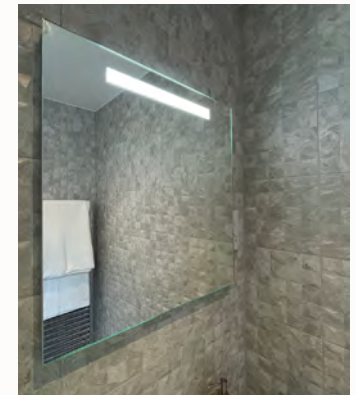
YOUR FREEMAN CHOICE

Once you have chosen your Freeman Home, it's time to personalise it and make it your own. We have spent a lot of time talking to our customers, sourcing items and researching ideas to create the perfect specification.

Our customers tell us they want to choose colours, finishes and add personal touches to make their home truly individual.

You may have some ideas about what you want, or perhaps you are looking for some inspiration. The Freeman Choice helps you personalise your property and ensure it feels like home from the moment you step inside.

Create your perfect home



FreemanHomes

SAY HELLO TO
THE VIBRANT CENTRE
OF HEREFORD



OAKFIELDS

OAKFIELDS

SITE MAP - PHASE ONE

4 BEDROOM



THE YEAT

164.6sqm - 1,772sqft

PAGE 18



THE STEINBECK

150.5sqm - 1,620sqft

PAGE 22



THE JOYCE

113.3sqm - 1,220sqft

PAGE 24



THE LEAR

125.6sqm - 1,352sqft

PAGE 26

3 BEDROOM



THE HARDY

102.8sqm - 1,107sqft

PAGE 28



THE KEATS

91.3sqm - 983sqft

PAGE 30



THE TENNYSON

81.2sqm - 874sqft

PAGE 35



THE MILNE

77.0sqm - 828.8sqft

PAGE 37



EARLY BIRD RESERVATIONS

How does it work?

1. Choose your ideal home.
2. You are given first refusal on the property once it is released for sale.
3. Talk to our sales team to find out which plots are available for Early Bird reservations.



OAKFIELDS














THE YEAT

4 BEDROOM 164.6 sqm / 1,772 sq ft

SPECIFICATION OVERVIEW

- Large, detached four-bedroom property
- Low-carbon, energy-efficient home, predicted to achieve an A-rated energy assessment
- Light, airy and spacious kitchen with NEFF appliances
- Kitchen island
- Separate dining room
- Utility room with external door
- Spacious living room with French doors to patio
- Family bathroom
- En suite shower room to bedrooms 1 and 2
- Fitted wardrobes with sliding doors to bedrooms 1, 2 & 3
- Walk-through wardrobe to master bedroom
- Sleek roof-integrated Solar PV panels and market leading NIBE Air Source Heat Pump
- Double garage with private parking
- Electric car charging point
- Oak porch

THE YEAT KEY FEATURES

 4 BEDROOMS	 TRADITIONAL LAYOUT	 FAMILY BATHROOM	 2 EN SUITES	 FITTED WARDROBES
 UTILITY	 HOME WORKING	 DOUBLE GARAGE	 ENERGY EFFICIENT	 LOW CARBON
			 VIEWS	



Plots **1** **59** **67** Red brick

PLOTS



All measurements are approximate and may vary on site. CGIs are of a similar property previously built. Floor plans are indicative only and are subject to change.





THE YEAT Plot 60 Painted white brick

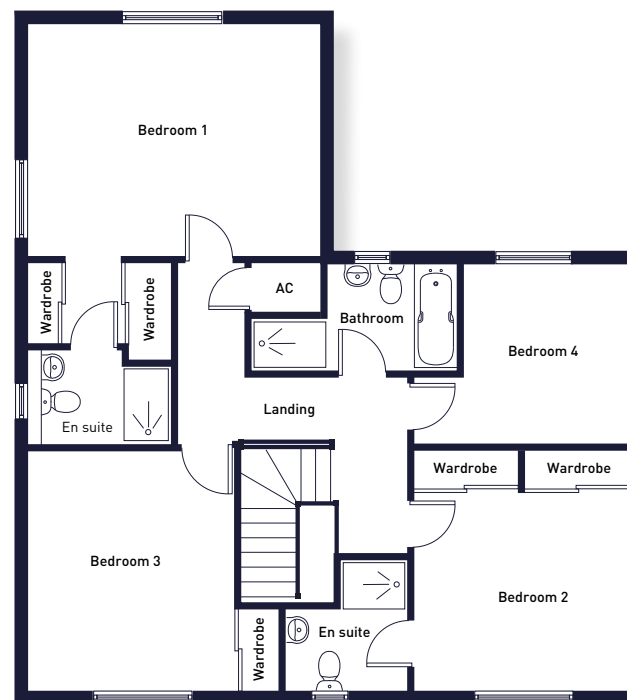
All measurements are approximate and may vary on site. CGI's are of a similar property previously built. Floor plans are indicative only and are subject to change.

THE YEAT

4 BEDROOM 164.6 sqm / 1,772 sq ft



GROUND FLOOR



FIRST FLOOR

Living Room	6.8m x 3.5m	22'4" x 11'6"
Kitchen	4.9m x 4.6m	16'1" x 15'1"
Dining Room	3.3m x 3.9m	10'10" x 12'10"
Utility	2.0m x 2.2m	6'7" x 7'3"

Bedroom 1	4.7m x 3.7m	15'5" x 12'2"
Bedroom 2	3.5m x 3.1m	11'6" x 10'2"
Bedroom 3	3.9m x 3.3m	12'10" x 10'10"
Bedroom 4	2.9m x 2.7m	9'6" x 8'10"

PLOTS



All measurements are approximate and may vary on site. CGIs and floor plans are indicative only and are subject to change. Please refer to the sales advisor for specific details as layout may be mirrored on individual plots.

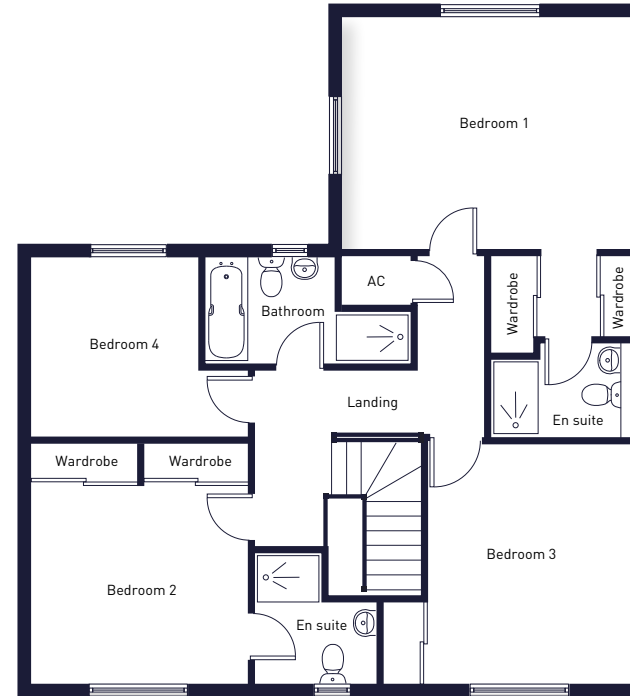


THE YEAT

4 BEDROOM 164.6 sqm / 1,772 sq ft



GROUND FLOOR



FIRST FLOOR

Living Room	6.8m x 3.5m	22'4" x 11'6"
Kitchen	4.9m x 4.6m	16'1" x 15'1"
Dining Room	3.3m x 3.9m	10'10" x 12'10"
Utility	2.0m x 2.2m	6'7" x 7'3"

Bedroom 1	4.7m x 3.7m	15'5" x 12'2"
Bedroom 2	3.5m x 3.1m	11'6" x 10'2"
Bedroom 3	3.9m x 3.3m	12'10" x 10'10"
Bedroom 4	2.9m x 2.7m	9'6" x 8'10"

PLOT

67

All measurements are approximate and may vary on site. CGIs and floor plans are indicative only and are subject to change. Please refer to the sales advisor for specific details as layout may be mirrored on individual plots.



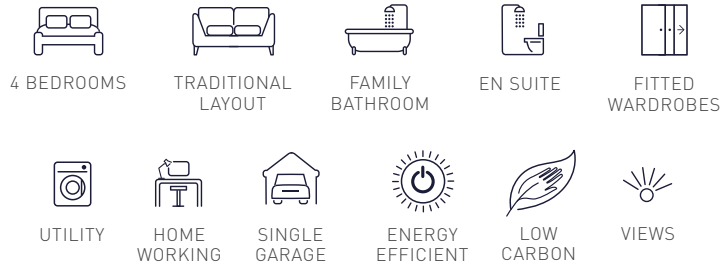
THE STEINBECK

4 BEDROOM 150.5 sqm / 1,620 sq ft

SPECIFICATION OVERVIEW

- Large, detached four-bedroom property
- Low-carbon, energy-efficient home, predicted to achieve an A-rated energy assessment
- Spacious kitchen with NEFF appliances
- Open plan kitchen and dining area with breakfast bar
- Utility with external door
- Spacious living room with French doors to patio
- Separate study for home working
- Family bathroom with separate shower
- En suite to master bedroom
- Fitted wardrobes with sliding doors to bedrooms 1, 2 & 3
- Generous hall and landing
- Sleek roof-integrated Solar PV panels and market leading NIBE Air Source Heat Pump
- Single garage with personnel door and private parking
- Electric car charging point
- Countryside views

THE STEINBECK KEY FEATURES



PLOT

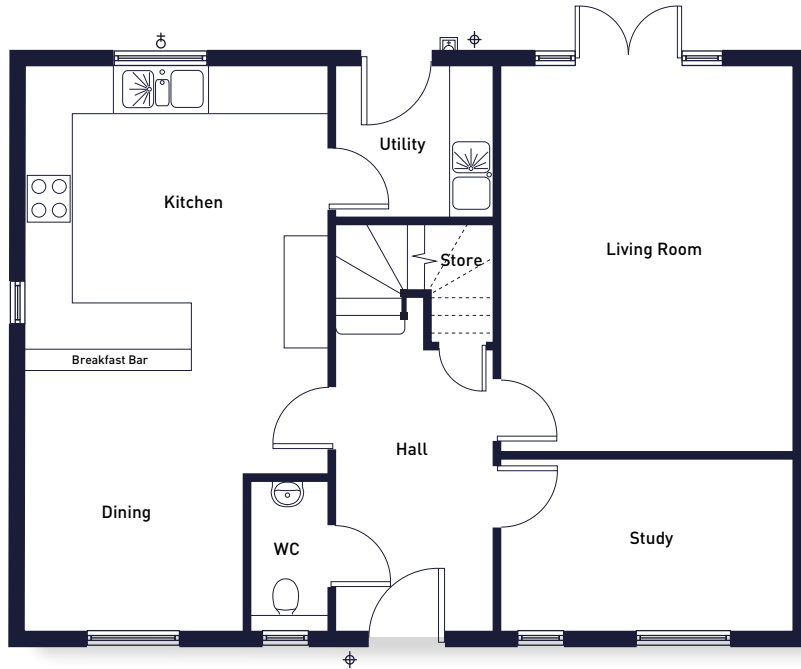


All measurements are approximate and may vary on site. CGIs are of a similar property previously built. Floor plans are indicative only and are subject to change.

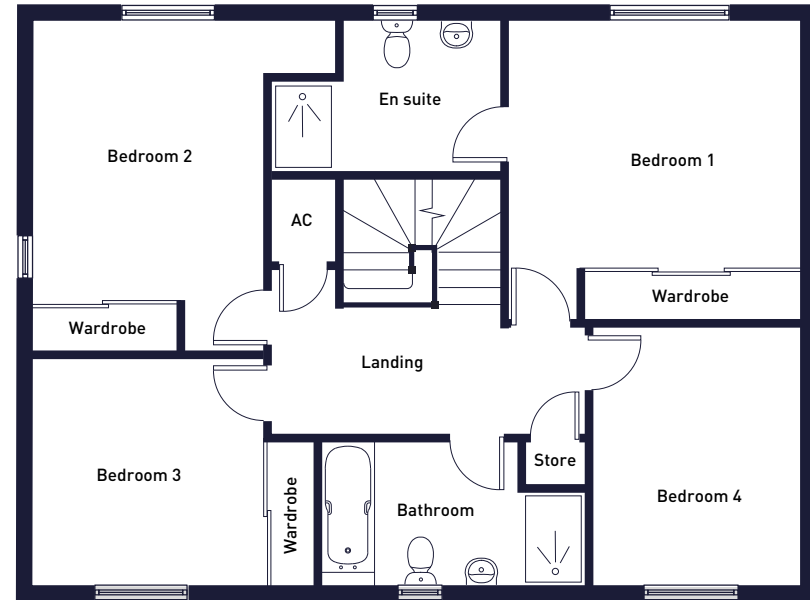


THE STEINBECK

4 BEDROOM 150.5 sqm / 1,620 sq ft



GROUND FLOOR



FIRST FLOOR

Living Room	5.0m x 3.8m	16'5" x 12'6"
Kitchen/Dining Room	7.5m x 4.0m	24'7" x 13'1"
Utility	2.1m x 2.0m	6'11" x 6'7"
Study	3.8m x 2.3m	12'6" x 7'75"

Bedroom 1	3.2m x 3.8m	10'6" x 12'6"
Bedroom 2	3.7m x 3.0m	12'2" x 9'10"
Bedroom 3	3.0m x 3.0m	9'10" x 9'10"
Bedroom 4	2.7m x 2.7m	8'10" x 8'10"

PLOT

7

All measurements are approximate and may vary on site. CGIs and floor plans are indicative only and are subject to change. Please refer to the sales advisor for specific details as layout may be mirrored on individual plots.

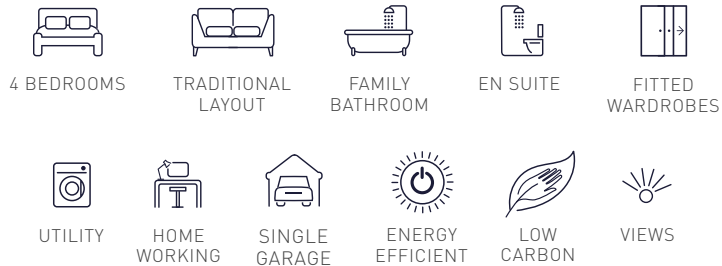
THE JOYCE

4 BEDROOM 113.3 sqm / 1,220 sq ft

SPECIFICATION OVERVIEW

- Detached four-bedroom property
- Low-carbon, energy-efficient home, predicted to achieve an A-rated energy assessment
- Spacious kitchen with NEFF appliances
- Utility with external door
- Spacious living room opening via double doors into separate dining room
- Family bathroom
- En suite to master bedroom
- Fitted wardrobes to bedrooms 1, 2 & 3
- Sleek roof-integrated Solar PV panels and market leading NIBE Air Source Heat Pump
- Single garage with personnel door and private parking
- Electric car charging point

THE JOYCE KEY FEATURES



PLOT

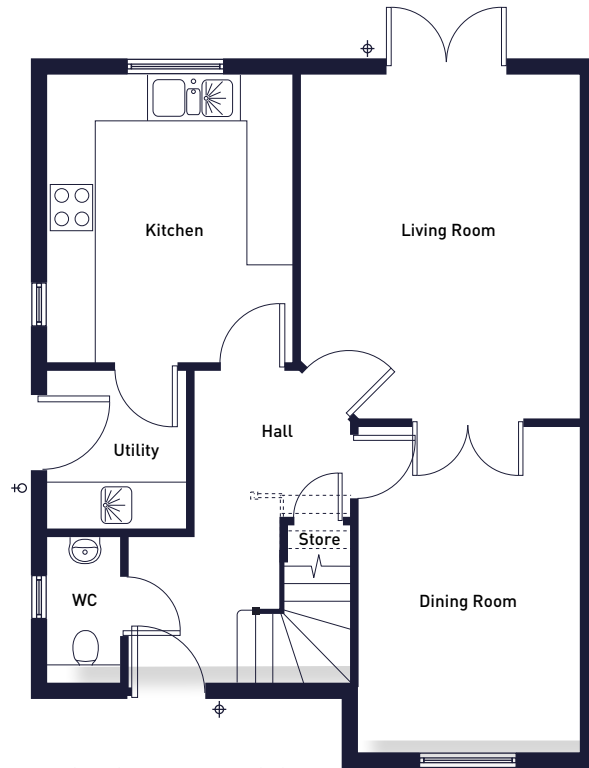
65

All measurements are approximate and may vary on site. CGIs are of a similar property previously built. Floor plans are indicative only and are subject to change.

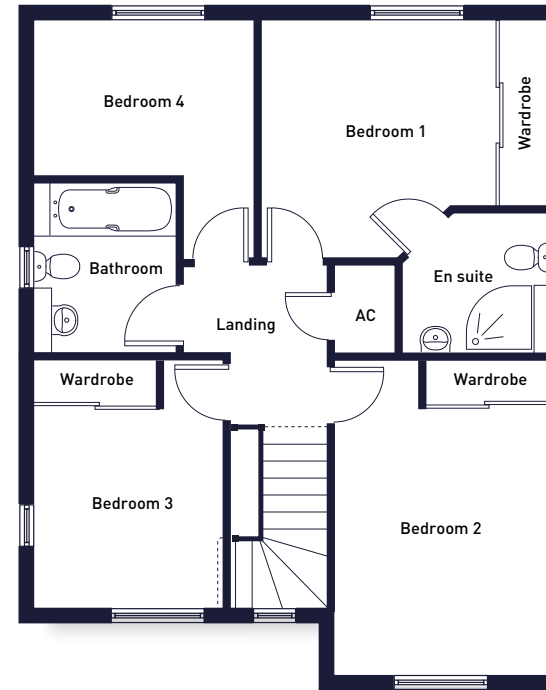


THE JOYCE

4 BEDROOM 113.3 sqm / 1,220 sq ft



GROUND FLOOR



FIRST FLOOR

Living Room	4.5m x 3.6m	14'9" x 11'10"
Kitchen	3.8m x 3.2m	12'6" x 10'6"
Dining Room	4.2m x 2.9m	13'91" x 9'6"
Utility	2.0m x 1.8m	6'7" x 5'11"

Bedroom 1	2.6m x 3.9m	8'6" x 12'10"
Bedroom 2	4.2m x 2.9m	13'9" x 9'6"
Bedroom 3	2.6m x 3.3m	8'6" x 10'10"
Study	2.1m x 3.0m	6'11" x 9'10"

PLOT

65

All measurements are approximate and may vary on site. CGIs and floor plans are indicative only and are subject to change. Please refer to the sales advisor for specific details as layout may be mirrored on individual plots.



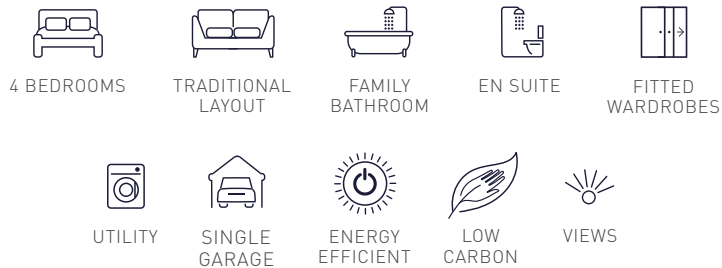
THE LEAR

4 BEDROOM 125.6 sqm / 1,352 sq ft

SPECIFICATION OVERVIEW

- Spacious, detached four-bedroom property
- Low-carbon, energy-efficient home, predicted to achieve an A-rated energy assessment
- Spacious open plan kitchen and large dining room
- Two sets of French doors provide reams of natural light
- Kitchen breakfast bar and integrated NEFF kitchen appliances
- Spacious and separate living room with connecting door to dining room
- Separate utility with external door to driveway
- Family bathroom
- En suite to master bedroom
- Fitted wardrobes with sliding doors to bedrooms 1, 2 & 3
- Generous private garden
- Single garage and private parking
- Sleek roof integrated Solar PV panels and market leading NIBE Air Source Heat Pump
- Electric car charging point

THE LEAR KEY FEATURES



PLOT

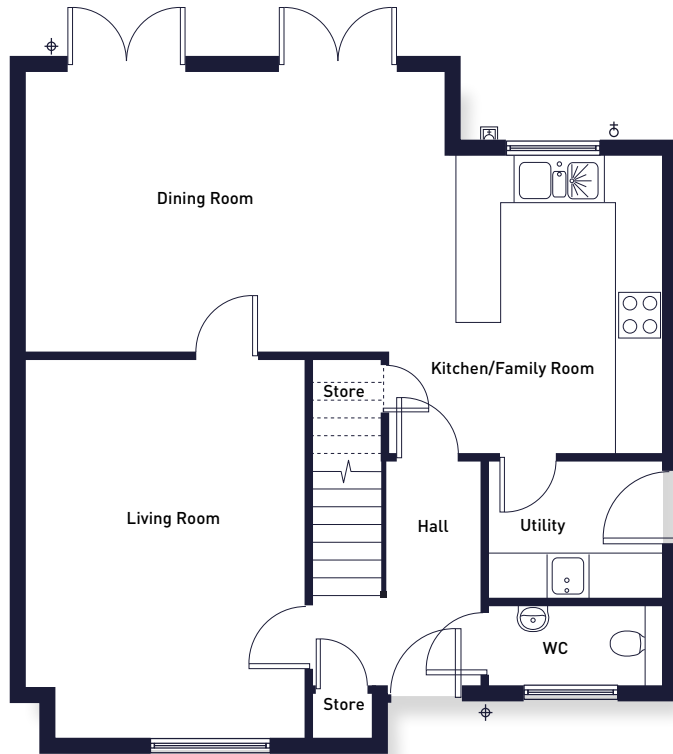
66

All measurements are approximate and may vary on site. CGIs are of a similar property previously built. Floor plans are indicative only and are subject to change.

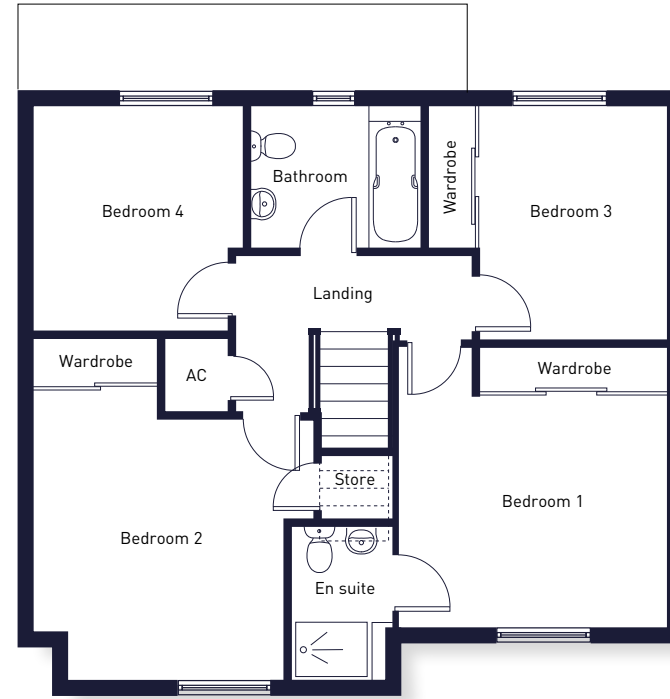


THE LEAR

4 BEDROOM 125.6 sqm / 1,352 sq ft



GROUND FLOOR



FIRST FLOOR

Living Room	3.7m x 5.0m	12'2" x 16'5"
Kitchen/Family Room	4.9m x 3.7m	16'1" x 12'2"
Dining Room	2.6m x 3.5m	8'6" x 11'6"
Utility	1.5m x 1.8m	4'11" x 5'11"

Bedroom 1	3.6m x 3.1m	11'10" x 10'2"
Bedroom 2	2.9m x 3.5m	9'6" x 11'6"
Bedroom 3	2.5m x 3.1m	8'2" x 10'2"
Bedroom 4	2.9m x 2.7m	9'6" x 8'10"

PLOT

66

All measurements are approximate and may vary on site. CGIs and floor plans are indicative only and are subject to change. Please refer to the sales advisor for specific details as layout may be mirrored on individual plots.



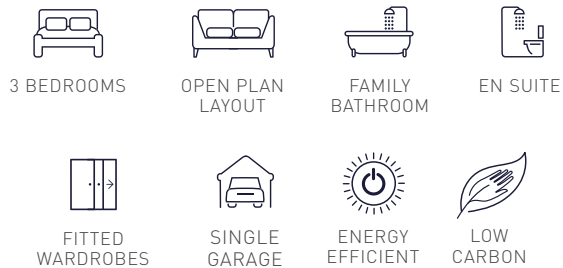
THE HARDY

3 BEDROOM 102.8 sqm / 1,107 sq ft

SPECIFICATION OVERVIEW

- Spacious three-bedroom property
- Low-carbon, energy-efficient home, predicted to achieve an A-rated energy assessment
- Modern kitchen with NEFF appliances
- Spacious open plan living area
- Sliding doors maximise flow of natural light
- Fitted wardrobes with sliding doors to bedrooms 1 & 2
- Family bathroom
- En suite to master bedroom
- Single garage with personnel door and private parking
- Sleek roof-integrated Solar PV panels and market leading NIBE Air Source Heat Pump
- Electric car charging point

THE HARDY KEY FEATURES



PLOT

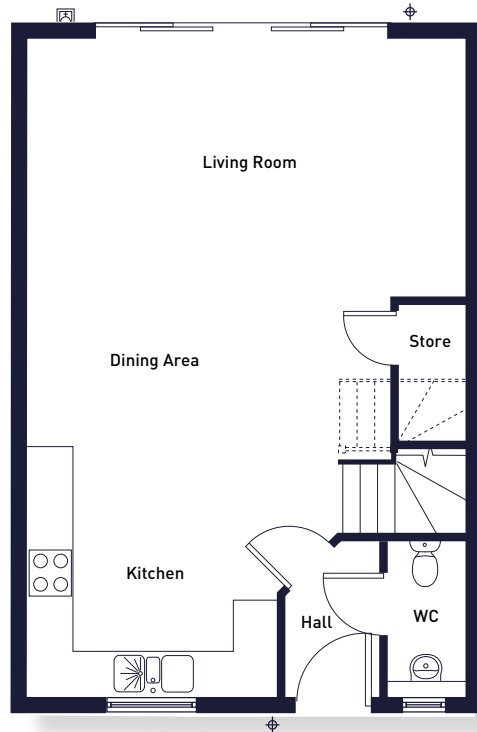


All measurements are approximate and may vary on site. CGIs are of a similar property previously built. Floor plans are indicative only and are subject to change.

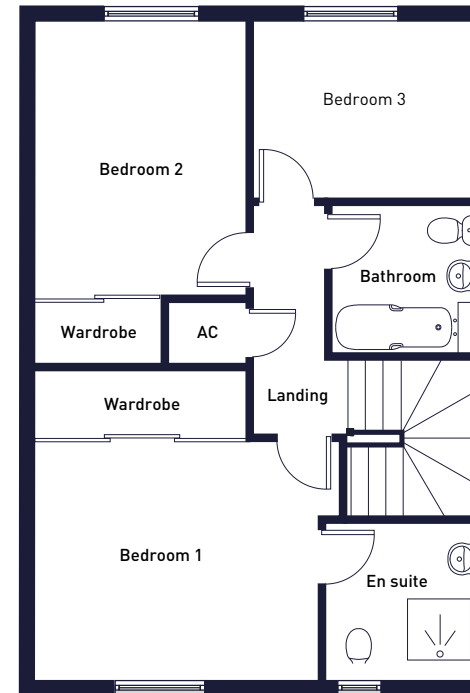


THE HARDY

3 BEDROOM 102.8 sqm / 1,107 sq ft



GROUND FLOOR



FIRST FLOOR

Living Room	5.9m x 3.4m	19'4" x 11'2"
Kitchen/Dining Area	5.6m x 4.9m	18'4" x 16'1"

Bedroom 1	3.8m x 3.5m	12'6" x 11'6"
Bedroom 2	3.6m x 2.8m	11'10" x 9'2"
Bedroom 3	3.0m x 2.4m	9'10" x 7'10"

PLOT

6

All measurements are approximate and may vary on site. CGIs and floor plans are indicative only and are subject to change. Please refer to the sales advisor for specific details as layout may be mirrored on individual plots.



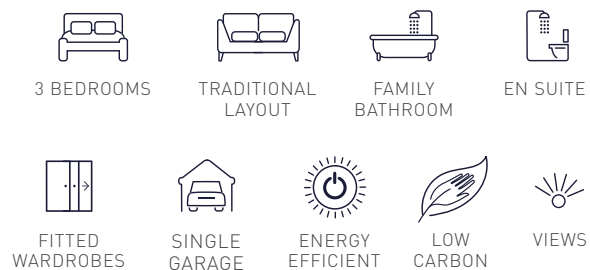
THE KEATS

3 BEDROOM 91.3 sqm / 983 sq ft

SPECIFICATION OVERVIEW

- Detached three-bedroom property
- Low-carbon, energy-efficient home, predicted to achieve an A-rated energy assessment
- Open plan kitchen and dining area
- NEFF integrated appliances
- Separate, spacious living room
- French doors with glazed side panels onto garden
- Family bathroom
- En suite to master bedroom
- Fitted wardrobes to bedrooms 1 & 2
- Sleek roof-integrated Solar PV panels and market leading NIBE Air Source Heat Pump
- Single garage with personnel door and private parking
- Electric car charging point

THE KEATS KEY FEATURES



PLOTS



All measurements are approximate and may vary on site. CGIs are of a similar property previously built. Floor plans are indicative only and are subject to change. Plots 4 & 5 are semi-detached





THE KEATS Plot **2** Painted white brick

All measurements are approximate and may vary on site. CGI's are of a similar property previously built. Floor plans are indicative only and are subject to change.

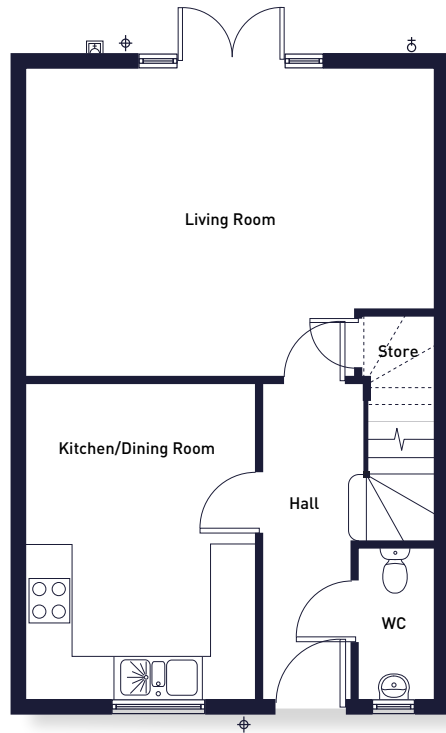


THE KEATS | Plot **61** Render in Sand Dune

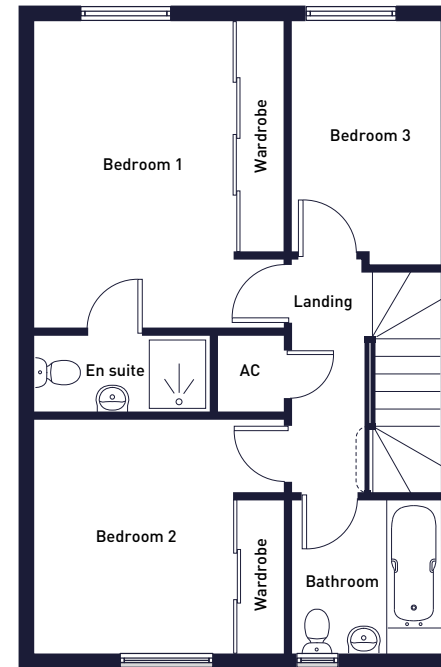
All measurements are approximate and may vary on site. CGI's are of a similar property previously built. Floor plans are indicative only and are subject to change.

THE KEATS

3 BEDROOM 91.3 sqm / 983 sq ft



GROUND FLOOR



FIRST FLOOR

Living Room	4.3m x 5.5m	14'1" x 18'1"
Kitchen/Dining Room	3.1m x 4.1m	10'2" x 13'5"

Bedroom 1	3.3m x 3.4m	10'10" x 11'2"
Bedroom 2	2.4m x 3.4m	7'10" x 11'2"
Bedroom 3	3.3m x 2.0m	10'10" x 6'7"

PLOTS

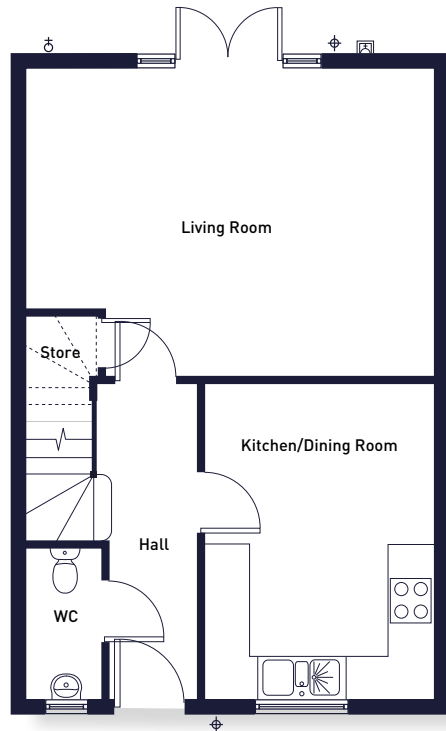


All measurements are approximate and may vary on site. CGIs and floor plans are indicative only and are subject to change. Please refer to the sales advisor for specific details as layout may be mirrored on individual plots.

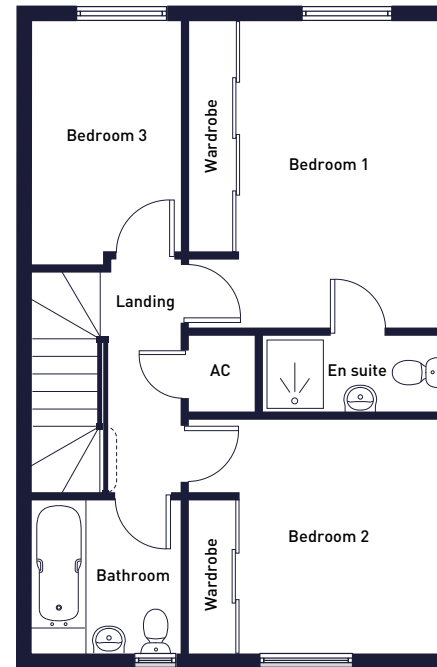


THE KEATS

3 BEDROOM 91.3 sqm / 983 sq ft



GROUND FLOOR



FIRST FLOOR

Living Room	4.3m x 5.5m	14'1" x 18'1"
Kitchen/Dining Room	3.1m x 4.1m	10'2" x 13'5"

Bedroom 1	3.3m x 3.4m	10'10" x 11'2"
Bedroom 2	2.4m x 3.4m	7'10" x 11'2"
Bedroom 3	3.3m x 2.0m	10'10" x 6'7"

PLOTS

2 61

All measurements are approximate and may vary on site. CGIs and floor plans are indicative only and are subject to change. Please refer to the sales advisor for specific details as layout may be mirrored on individual plots.



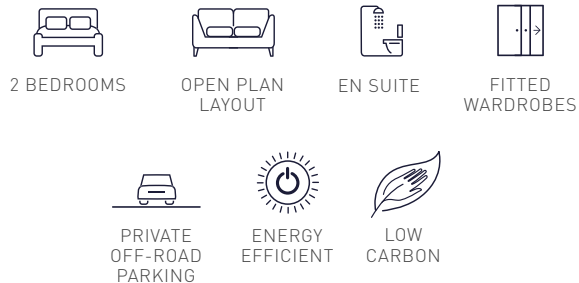
THE TENNYSON

2 BEDROOM 81.2 sqm / 874 sq ft

SPECIFICATION OVERVIEW

- Semi-detached two-bedroom property
- Low-carbon, energy efficient home, predicted to achieve an A-rated energy assessment
- Open plan kitchen, living and dining area
- Integrated NEFF kitchen appliances
- French doors onto patio and garden
- En suites to both bedrooms
- Fitted wardrobes with sliding doors
- Private garden
- Sleek roof-integrated Solar PV panels and market leading NIBE Air Source Heat Pump
- Electric car charging point

THE TENNYSON KEY FEATURES



PLOT

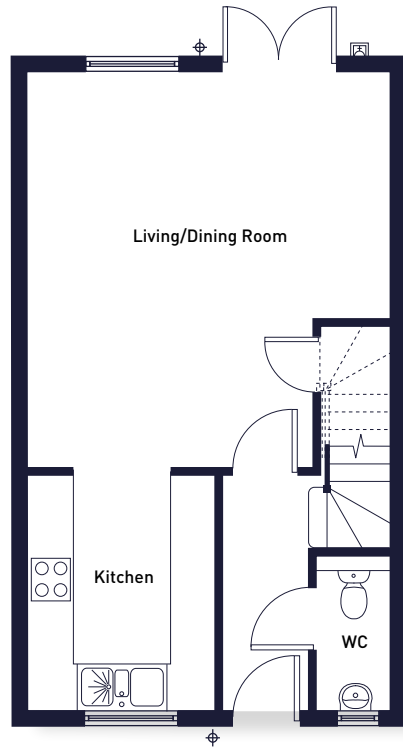
3

All measurements are approximate and may vary on site. CGIs are of a similar property previously built. Floor plans are indicative only and are subject to change.

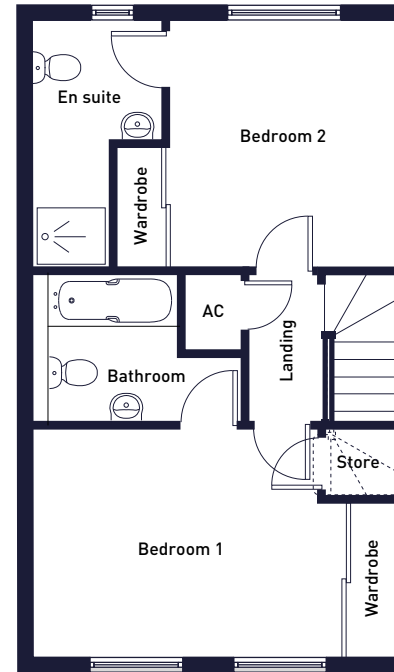


THE TENNYSON

2 BEDROOM 81.2 sqm / 874 sq ft



GROUND FLOOR



FIRST FLOOR

Living/Dining Room	5.2m x 4.8m	17'1" x 15'9"
Kitchen	3.1m x 2.5m	10'2" x 8'2"

Bedroom 1	4.2m x 3.1m	13'9" x 10'2"
Bedroom 2	3.2m x 3.1m	10'6" x 10'2"

PLOT

3

All measurements are approximate and may vary on site. CGIs and floor plans are indicative only and are subject to change. Please refer to the sales advisor for specific details as layout may be mirrored on individual plots.



OAKFIELDS

THE MILNE

2 BEDROOM 77.0 sqm / 828.8 sq ft

SPECIFICATION OVERVIEW

- Semi-detached two-bedroom property
- Low-carbon, energy efficient home, predicted to achieve an A-rated energy assessment
- Open plan kitchen and dining area
- Integrated NEFF kitchen appliances
- French doors with glazed side panels onto patio and garden
- En suite to master bedroom
- Family Bathroom
- Fitted wardrobes with sliding doors
- Private garden
- Sleek roof-integrated Solar PV panels and market leading NIBE Air Source Heat Pump
- Private parking
- Electric car charging point

THE MILNE KEY FEATURES



2 BEDROOMS



TRADITIONAL LAYOUT



FAMILY BATHROOM



EN SUITE



FITTED WARDROBES



PRIVATE OFF-ROAD PARKING



ENERGY EFFICIENT



LOW CARBON



PLOT

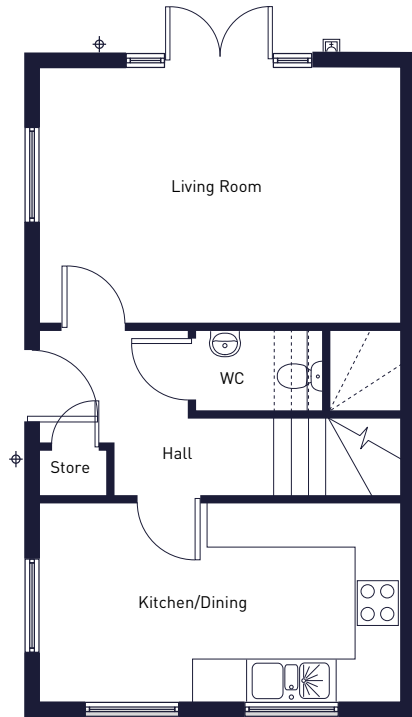
62

All measurements are approximate and may vary on site. CGIs are of a similar property previously built. Floor plans are indicative only and are subject to change.



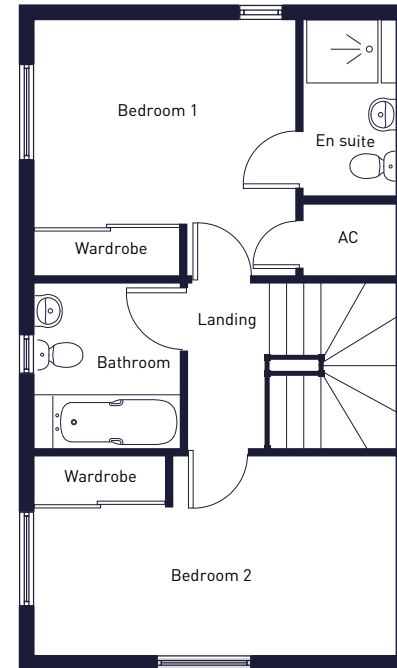
THE MILNE

2 BEDROOM 77.0 sqm / 828.8 sq ft



GROUND FLOOR

Living Room	3.4m x 4.8m	11'2" x 15'9"
Kitchen/Dining Room	2.7m x 4.8m	8'10" x 15'9"



FIRST FLOOR

Bedroom 1	2.7m x 2.7m	8'10" x 8'10"
Bedroom 2	2.2m x 4.8m	7'3" x 15'9"

PLOT

62

All measurements are approximate and may vary on site. CGIs and floor plans are indicative only and are subject to change. Please refer to the sales advisor for specific details as layout may be mirrored on individual plots.



**SUPPORTING THE LOCAL
COMMUNITY**

**We are contributing £377,181
to the Credenhill and the surrounding
local community**

Education Facilities £222,944

Enhanced educational infrastructure at St Mary's Primary School and Weobley High School

Recycling & Waste Management £5,360

Waste collection facilities

Sport Facilities £38,192

Improvements at Roman Park

Transport £110,685

Improvements to transport facilities by Herefordshire Council

New Cycleway

Upgrading circa 300m of footpath to a footpath and cycleway for better connecting routes

Affordable Homes

Design and construction of affordable properties that will be made available to local people (subject to Herefordshire Council criteria)

BUILDING FOR A BETTER FUTURE



FreemanHomes

SAY HELLO TO A
LOCATION LIKE NO OTHER



OAKFIELDS

40

Woodland walks, Credenhill

PROUD TO BE DIFFERENT

Room to live

Freeman Homes have garnered a reputation for generously proportioned homes that will be a pleasure to live in for years to come.

Abundance of storage

You will find ample built-in storage throughout our homes - a feature for which our customers continually praise us.

Exceptional quality

All of the homes at Credenhill have quality touches throughout, including Porcelanosa tiles, underfloor heating, integrated NEFF kitchen appliances, Villeroy & Boch sanitaryware and Hansgrohe brassware.

Peace of mind

All of our homes have a ten-year NHBC warranty and our team is always on hand to assist you with any queries you may have.

Excellent customer service

We are a customer-focused organisation whose customers are at the forefront of our minds when we design, build and hand over our homes. We listen to our customers and treat them like members of our family, getting to know each individual and doing what we can to remove any stress and make moving an enjoyable experience.

Award-winning

Our growing array of accolades for design and innovation is testament to our dedication to excellence. You can be assured that every Freeman Home is of the highest quality.



BUILDING FOR A BETTER FUTURE

We have all been rethinking the way we live our lives, and here at Freeman Homes we are more committed than ever to building for a better future.

Enjoy space to work, relax and play; countryside in which to exercise, connect with nature and breathe fresh air every day; a safe community in which to live, where you can spend quality time with loved ones.

Freeman Homes is a second generation, family-owned business with a heritage dating back to 1966. Our commitment to excellence remains true to the values upon which our company was founded.

Family is at the heart of everything we do, and we are proud to build homes where memories are made and cherished.

We are passionate about the stunning landscapes within which we build, and actively seek locations that offer great lifestyles.

From our family to yours



LOCAL LINKS

Some useful links to notable, local establishments and amenities we would like to share with you.

EDUCATION

credenhill.hereford.sch.uk

hlcollege.ac.uk

hca.ac.uk

GET ACTIVE

haloleisure.org.uk

south-herefordshireregc.co.uk

spiderclimbing.com/green-spider

holmerpark.co.uk

SEE AND DO

wydeantourism.co.uk

visitherefordshire.co.uk



FreemanHomes

SAY HELLO TO
A PLACE TO RELAX
AND UNWIND



OAKFIELDS



FreemanHomes

ENERGY-EFFICIENT
EPC A-RATED HOMES



OAKFIELDS

CREDENHILL, HEREFORDSHIRE

Talk to our friendly team today

01594 543354

credenhill@freemanhomes.co.uk

www.freemanhomes.co.uk

FreemanHomes
A division of the MF Freeman Group

Credenhill, Herefordshire HR4