

28 Whyterose Terrace, Methil – KY8 3AS

Leven

Offers Over £47,500





home sweet home
estate agents
your local property experts



28 Whyterose Terrace

Methil, Leven

New for sale a Spacious Main door Upper Maisonette over 2 levels with partial Sea Views SOLD AS SEEN. Comprising Entrance Hall - Lounge (4.61m X 3.58m)- Kitchen (3.27m x 2.61m) - Two Double Bedrooms (Bedroom 1 4.38m x 3.96m) (Bedroom 2 4.46m x 3.35m) - Bathroom/WC (2.90m x 1.96m) - Externally shared gardens. Benefitting from DG- GCH - EPC D - HOME REPORT £50,000.

Council Tax band: A

Tenure: Freehold

EPC Energy Efficiency Rating: D

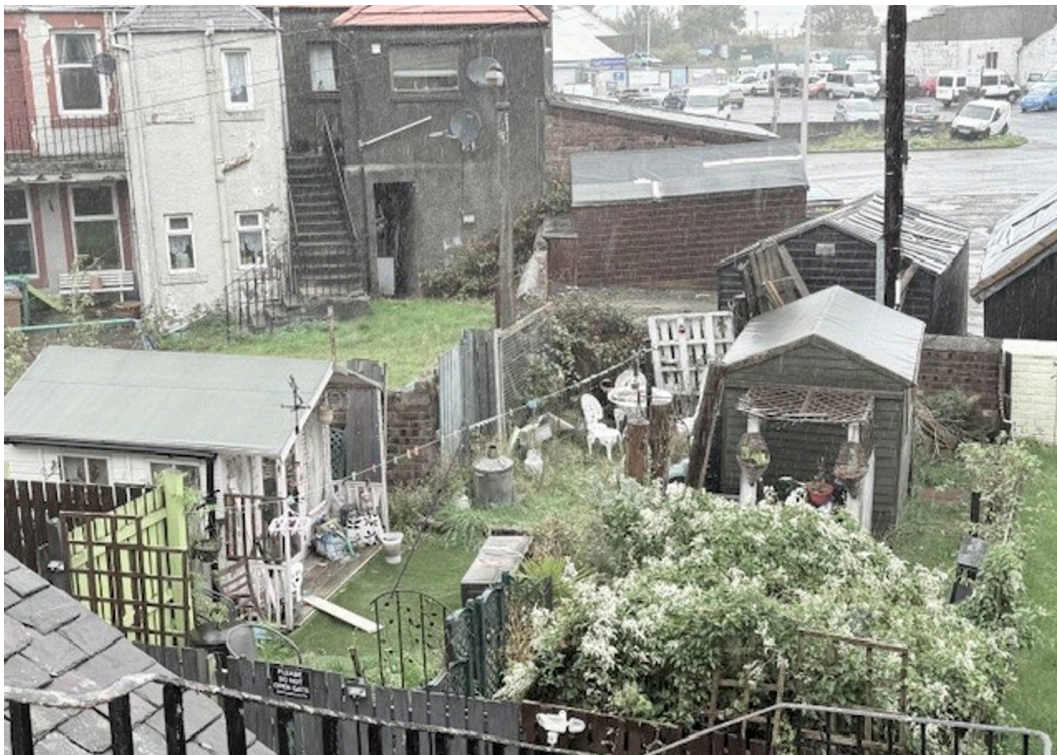
EPC Environmental Impact Rating: D

- TRADITIONAL UPPER MAISONETTE SOLD AS SEEN
- TWO DOUBLE BEDROOMS
- LOUNGE- KITCHEN - BATHROOM
- DG- GCH - EPC D - HOME REPORT £50,000
- SHARED REAR GARDEN



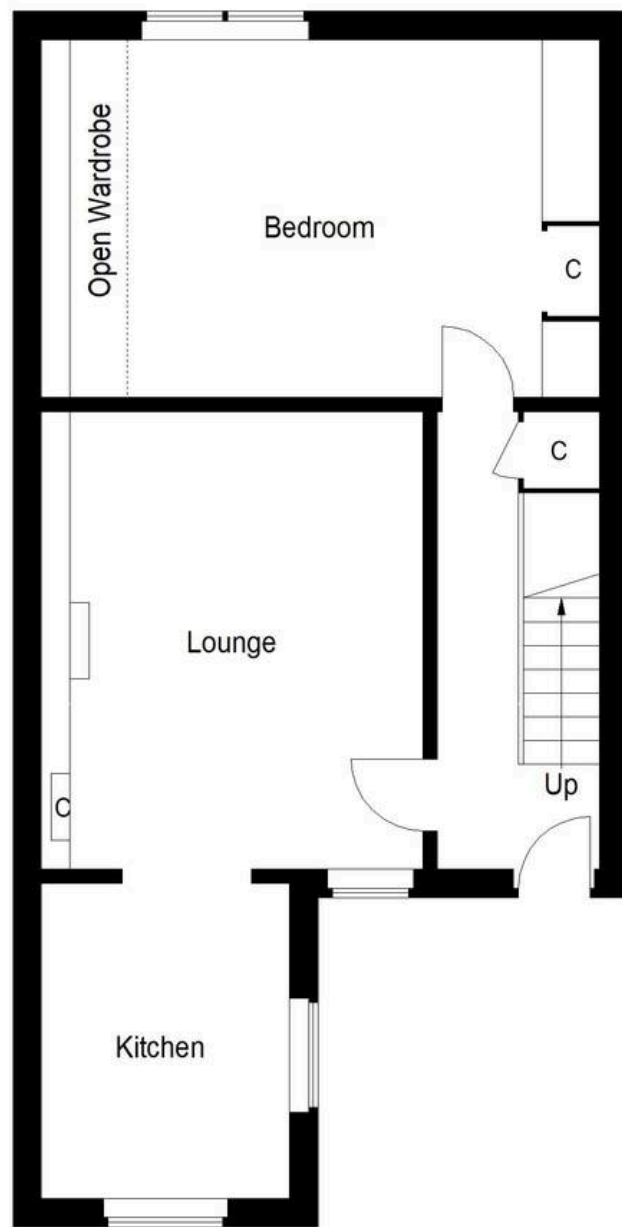
COMMUNAL GARDEN



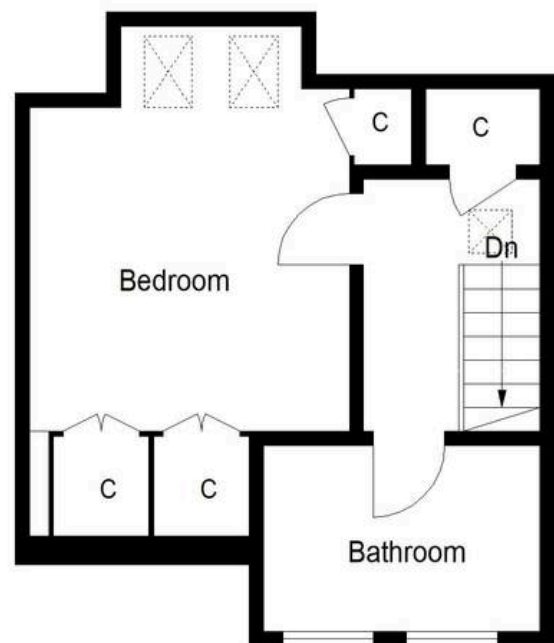


Energy Efficiency Rating		
	Current	Potential
Very energy efficient - lower running costs		
(92+) A		
(81-91) B		
(69-80) C		
(55-68) D		
(39-54) E		
(21-38) F		
(1-20) G		
Not energy efficient - higher running costs		
	55	71
EU Directive 2002/91/EC		
England, Scotland & Wales		

Environmental Impact (CO ₂) Rating		
	Current	Potential
Very environmentally friendly - lower CO ₂ emissions		
(92+) A		
(81-91) B		
(69-80) C		
(55-68) D		
(39-54) E		
(21-38) F		
(1-20) G		
Not environmentally friendly - higher CO ₂ emissions		
	55	74
EU Directive 2002/91/EC		
England, Scotland & Wales		



Ground Floor



First Floor

Illustration for identification purposes only, measurements are approximate, not to scale. floorplansUsketch.com © (ID1239586)



home sweet home
estate agents
your local property experts