



63 Wellesley Road, Methil - KY8 3AD

Leven

Offers Over £60,000





63 Wellesley Road

Methil, Leven

Spacious traditional ground floor flat close to amenities & coastal path. 2 bedrooms, lounge, kitchen, bathroom. DG, GCH, EPC C. Enclosed courtyard garden. Home report £62,000. View now!

Council Tax band: A

Tenure: Freehold

EPC Energy Efficiency Rating: C

EPC Environmental Impact Rating: C

- TRADITIONAL MAIN DOOR GROUND FLOOR FLAT
- TWO DOUBLE BEDROOMS
- BRIGHT LOUNGE
- DG- GCH - EPC C
- HOME REPORT £62,000
- REAR GARDENS
- IDEAL STARTER HOME

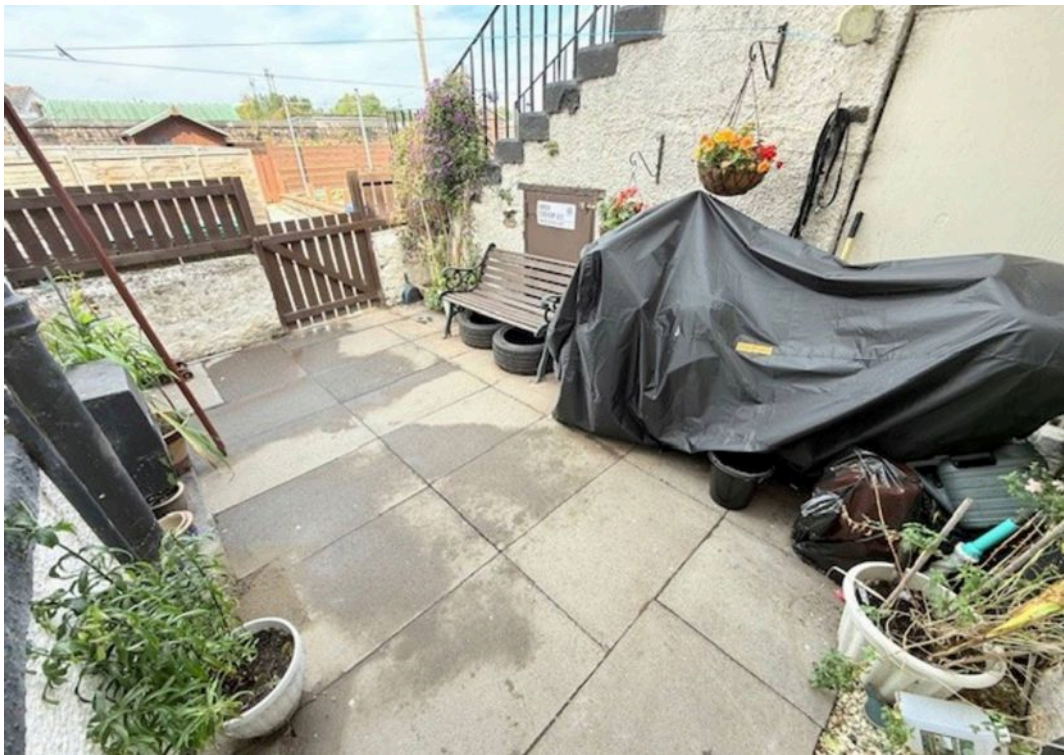


home sweet home
estate agents
your local property experts



GARDEN





Energy Efficiency Rating		
	Current	Potential
Very energy efficient - lower running costs		
(92+) A		
(81-91) B		
(69-80) C		
(55-68) D		
(39-54) E		
(21-38) F		
(1-20) G		
Not energy efficient - higher running costs		
	69	75
England, Scotland & Wales		
EU Directive 2002/91/EC		

Environmental Impact (CO ₂) Rating		
	Current	Potential
Very environmentally friendly - lower CO ₂ emissions		
(92+) A		
(81-91) B		
(69-80) C		
(55-68) D		
(39-54) E		
(21-38) F		
(1-20) G		
Not environmentally friendly - higher CO ₂ emissions		
	70	78
England, Scotland & Wales		
EU Directive 2002/91/EC		



Illustration for identification purposes only, measurements are approximate,
not to scale. Fourlabs.co © (ID1234780)



home sweet home
estate agents
your local property experts