



50 Dothan Road, Kirkcaldy

£304,995 Freehold

STUNNING EXECUTIVE DETACHED VILLA • DG- GCH - EPC B - HOME REPORT £320,000 • BAY WINDOW LOUNGE - MODERN DINING KITCHEN • FAMILY BATHROOM - SEP WC • 4 DOUBLE BEDROOMS MASTER EN-SUITE • DOUBLE DRIVE- SINGLE GARAGE • PRIVATE ENCLOSED GARDEN • SOUGHT AFTER FAMILY HOME • BUILT BY DUNDAS HOMES • ALARM - CCTV - VIEW NOW!



home sweet home
estate agents
your local property experts



For sale: Executive Detached Villa in Ostlers Way. 4 bed, master en-suite, modern kitchen, bay window lounge, utility room, DG, GCH, EPC B. Double drive, garage, garden. CCTV & Alarm. HOME REPORT £320,000. Viewing recommended!

Council Tax band: F

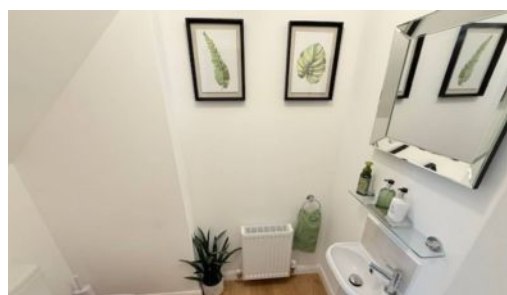
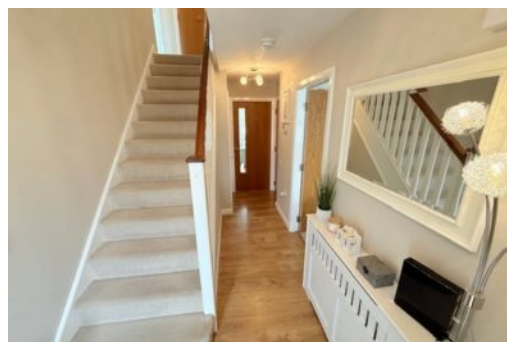
Tenure: Freehold

EPC Energy Efficiency Rating: B

EPC Environmental Impact Rating: B



- STUNNING EXECUTIVE DETACHED VILLA
- DG- GCH - EPC B - HOME REPORT £320,000
- BAY WINDOW LOUNGE - MODERN DINING KITCHEN
- FAMILY BATHROOM - SEP WC
- 4 DOUBLE BEDROOMS MASTER EN-SUITE
- DOUBLE DRIVE- SINGLE GARAGE
- PRIVATE ENCLOSED GARDEN
- SOUGHT AFTER FAMILY HOME
- BUILT BY DUNDAS HOMES
- ALARM - CCTV - VIEW NOW!





Ground Floor



First Floor

Total floor area 126.5 m² (1,362 sq.ft.) approx

This floor plan is for illustrative purposes only. It is not drawn to scale. Any measurements, floor areas (including any total floor area), openings and orientation are approximate. No details are guaranteed, they cannot be relied upon for any purpose and they do not form part of any agreement. No liability is taken for any error, omission or misstatement. A party must rely upon its own inspection(s). Powered by www.localagent.com

You can include any text here. The text can be modified upon generating your brochure.