



25 DENFIELD AVENUE CARDENDEN, KY5 0BX

£92,500
FREEHOLD

New for sale a Superb Main Door Upper Cottage Style Flat with Large Garden, Driveway, Summerhouse & Shed. Award Winning Home Sweet Home Estate Agents Fife are delighted to present for sale this stunning starter home with all the bells & whistles comprising Entrance with stairs to first floor features Oak doors - Bright Lounge with media wall & back lit ceiling - Dining Kitchen - Three Double Bedrooms - Modern Bathroom WC. Benefitting from DG- GCH - EPC C - HOME REPORT £95,000. Externally driveway, large enclosed rear garden with Summerhouse & timber shed. View now!



home sweet home
estate agents
your local property experts

25 DENFIELD AVENUE

- BEAUTIFUL & SPACIOUS MAIN DR UPPER COTTAGE FLAT • THREE DOUBLE BEDROOMS • DRIVEWAY - LARGE GARDEN - SUMMERHOUSE - SHED • LOUNGE WITH MEDIA WALL • DINING KITCHEN • MODERN BATHROOM./WC • DG- GCH - EPC C - HOME REPORT £95,000 • SUPER STARTER HOME



FULL DESCRIPTION

New for sale a Superb Main Door Upper Cottage Style Flat with Large Garden, Driveway, Summerhouse & Shed. Award Winning Home Sweet Home Estate Agents Fife are delighted to present for sale this stunning starter home with all the bells & whistles comprising Entrance with stairs to first floor features Oak doors - Bright Lounge with media wall & back lit ceiling - Dining Kitchen - Three Double Bedrooms - Modern Bathroom WC. Benefitting from DG- GCH - EPC C - HOME REPORT £95,000. Externally driveway, large enclosed rear garden with Summerhouse & timber shed. View now!

LOCATION

Popular Central Fife Town approximately 3 miles north of A92 for commuting with Fife Circle railway Halt, Mainline Bus Route, Primary Schooling & Local Shopping.

ENTRANCE

Security door with stairs to first floor landing.

LANDING

Features Oak doors, deep store. Hatch to loft with pull down ladder.

LOUNGE

Bright public room upgraded to feature media wall & lowered ceiling all with discrete colour changing lighting either remotely or via app. 2 DG windows to front. Downlighting. Laminate floor.

DINING KITCHEN

Generously proportioned with wall & base cabinets, wipe clean worktop, inset 1,5 sink & mixer tap. Gas hob, oven. Chrome sockets & switches. DG window to rear. Space for table & chairs.

BEDROOM 1

Spacious main bedroom with fitted mirrored wardrobes running width of room. 2 DG windows to front. Picture rail. Carpet.

BEDROOM 2

Second double bedroom currently a walk in dressing room. DG window to rear & side. Carpet.

BEDROOM 3

Bright third double bedroom. DG window to rear. Carpet.

MODERN BATHROOM/WC

Updated to feature a spa bath with overhead rainfall shower, separate spray attachment & clear screen. Wash hand vanity unit & mirror above. Low level wc. Tiled floor & wall. Downlighting. Frost DG window.

DRIVEWAY

Provides off street parking.

LARGE REAR GARDEN

Generous enclosed rear garden, stone chipped, artificial turf play area leading to composite decking & summerhouse. Timber shed.

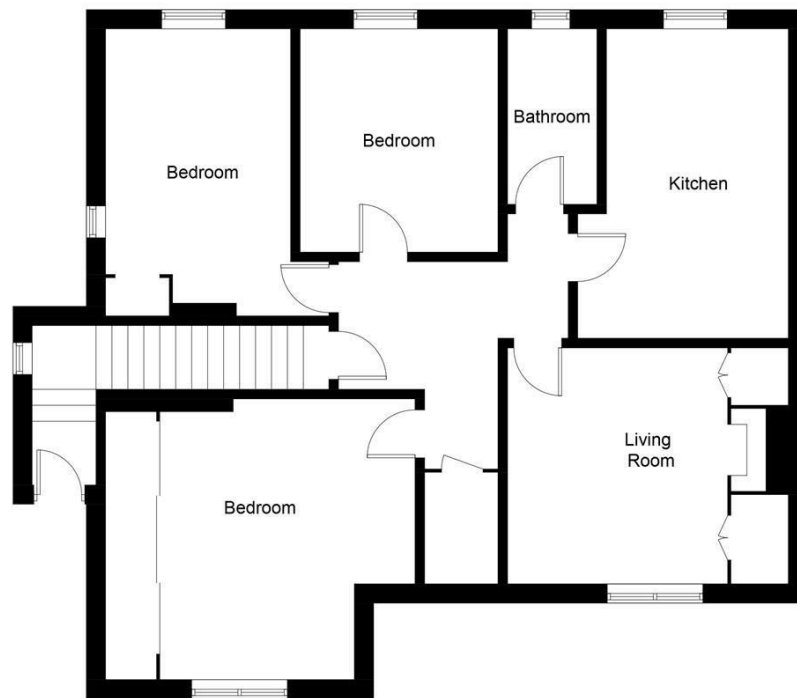
SUMMERHOUSE

Flexible space with DG windows, Dg patio doors.

Power, light & heater. Leads onto composite decking.

25 DENFIELD AVENUE





First Floor

Illustration for identification purposes only, measurements are approximate, not to scale. Fourlabs.co © (ID1184557)



Energy Efficiency Rating		
	Current	Potential
Very energy efficient - lower running costs		
(92 plus) A		
(81-91) B		
(69-80) C	72	76
(55-68) D		
(39-54) E		
(21-38) F		
(1-20) G		
Not energy efficient - higher running costs		
Scotland	EU Directive 2002/91/EC	

Agents Note: Whilst every care has been taken to prepare these particulars, they are for guidance purposes only. All measurements are approximate and are for general guidance purposes only and whilst every care has been taken to ensure their accuracy, they should not be relied upon and potential buyers/tenants are advised to recheck the measurements

Home Sweet Home Estate Agents Fife
Sales
86 High Street
Markinch
Fife
KY7 6DQ

01592 725370
info@homesweethomemoves.co.uk
www.homesweethomemoves.co.uk



home sweet home
estate agents
your local property experts