

27 ZETLAND PLACE

LOCHGELLY, KY5 9BL

£149,995
FREEHOLD

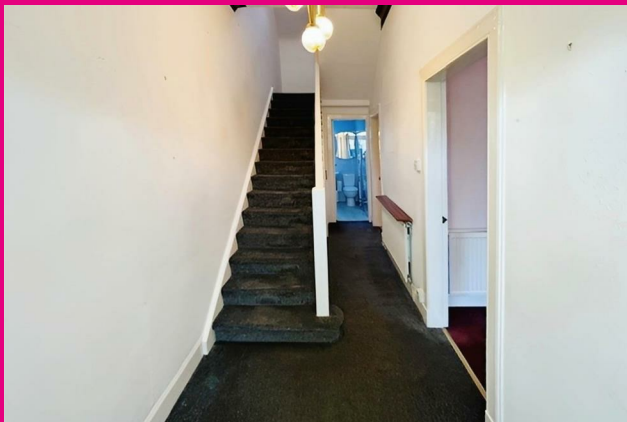
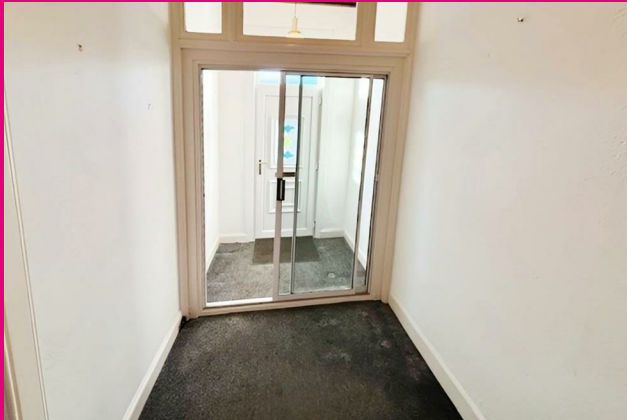
NEW REDUCED PRICE 15K UNDER HOME REPORT FOR SALE a Traditional Extended Semi Detached Villa. Award Winning Home Sweet Home Estate Agents Fife are pleased to offer for sale a spacious family home in popular location comprising: Entrance Vestibule - Reception Hall - Sitting/ Dining Room - Kitchen - Three Bedrooms 1 En-Suite - Bathroom/WC. Benefitting from DG- GCH - EPC D. Externally front garden, & rear garden. Garage. View Now! HOME REPORT £165,000.



home sweet home
estate agents
your local property experts

27 ZETLAND PLACE

- NEW REDUCED PRICE TRADITIONAL EXTENDED SEMI DETACHED VILLA • THREE BEDROOMS ONE EN-SUITE • SITTING/ DINING ROOM • DG- GCH - EPC E • KITCHEN- BATHROOM • GARAGE • FRONT & REAR GARDEN • HOME REPORT £165,000



FULL DESCRIPTION

NEW REDUCED PRICE 15K UNDER HOME REPORT FOR SALE a Traditional Extended Semi Detached Villa. Award Winning Home Sweet Home Estate Agents Fife are pleased to offer for sale a spacious family home in popular location comprising: Entrance Vestibule - Reception Hall - Sitting/ Dining Room - Kitchen - Three Bedrooms 1 En-Suite - Bathroom/WC. Benefitting from DG- GCH - EPC D. Externally front garden, & rear garden. Garage. View Now! HOME REPORT £165,000.

LOCATION

Popular Central Fife Town approximately 3 miles North of A92 for commuting with Fife Circle Railway Halt, Mainline Bus Route, Primary Schooling & Local Shopping.

ENTRANCE VESTIBULE

Security door. DG patio doors to entrance hall.

ENTRANCE HALL

Leads to all accommodation on 2 levels. Under stairs storage.

SITTING/ DINING ROOM

Good size public room adjacent to kitchen. DG window to rear. Boiler housed in store cupboard. Gas fire.

KITCHEN

Wall & base cabinets, wipe clean worktop, inset sink. DG window to rear. Security door.

BEDROOM 1/ SITTING ROOM

Flexible room either as a double bedroom or further public room. DG bay window to front. High corniced ceiling. Gas fire. Fuse box housed.

BATHROOM

Comprising bath with over head Mira Sport shower. Wash hand basin. Low level wc. Frost DG window. Wet wall splashback. Chrome radiator.

STAIRS TO FIRST FLOOR LANDING

DG skylight window. Store cupboard. Loft access.

BEDROOM 2

Spacious main double bedroom. DG window to front. Eaves storage.

EN-SUITE

Bath. Wash hand basin. Low level wc.

BEDROOM 3

Bright single bedroom. DG window to front.

EXTERNAL

Walled front garden. Mainly hard standing rear garden.

GARAGE

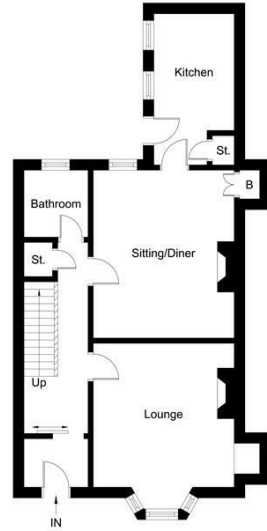
Single detached garage. Up & over door. Power & light.

27 ZETLAND PLACE





First Floor



Ground Floor



Energy Efficiency Rating		Current	Potential
<i>Very energy efficient - lower running costs</i>			
(92 plus) A			
(81-91) B			
(69-80) C			
(55-68) D			
(39-54) E			
(21-38) F			
(1-20) G			
<i>Not energy efficient - higher running costs</i>			
Scotland		EU Directive 2002/91/EC	

Agents Note: Whilst every care has been taken to prepare these particulars, they are for guidance purposes only. All measurements are approximate and are for general guidance purposes only and whilst every care has been taken to ensure their accuracy, they should not be relied upon and potential buyers/tenants are advised to recheck the measurements

Home Sweet Home Estate Agents Fife
Sales
86 High Street
Markinch
Fife
KY7 6DQ

01592 725370
info@homesweethomemoves.co.uk
www.homesweethomemoves.co.uk

