



**11 SHORE DRIVE, KIRBY
MUXLOE LE9 2FE**

£286,000
FREEHOLD



0116 236 7000



sales@judgeestateagents.co.uk



judgeestateagents.co.uk



13 The Nook, Anstey, Leicester,
Leicestershire, LE7 7AZ



SET WITHIN THE HEART OF THIS HIGHLY REGARDED AND SOUGHT AFTER VILLAGE COMES OFFERED FOR SALE THIS MODERN TWO BEDROOM SEMI-DETACHED HOUSE BUILT BY WILLIAM DAVIS IN 2024. SITUATED IN AN EXCELLENT POSITION ON THIS SELECT DEVELOPMENT ON THE OUTSKIRTS OF KIRBY MUXLOE VILLAGE. LOCAL SHOPS, SCHOOLS AND RECREATIONAL AMENITIES ARE ALL CLOSE BY AS ARE MAJOR ROUTES AND LEICESTER CITY CENTRE. IN BRIEF THIS LOVELY HOME BENEFITS FROM AN ENTRANCE HALL, LIVING ROOM, KITCHEN/DINING ROOM, WC, FIRST FLOOR LANDING, TWO BEDROOMS AND A BATHROOM. THERE IS A WELL MAINTAINED AND EYE-CATCHING GARDEN AS WELL AS ALLOCATED, AMPLE OFF ROAD PARKING. A VIEWING COMES HIGHLY ADVISED TO FULLY APPRECIATE.

PLEASE NOTE - FLOORPLAN AND VIDEO TO COME.



ENTRANCE HALL

There are stairs leading up to the first floor landing, radiator, power point and a door that leads to:

LIVING ROOM 15'6 x 9'5

Benefiting from a window to the front aspect, radiator, power points and a door that leads to:

KITCHEN 12'7 x 10'8

Having a range of wall and base units with work surfaces, sink with a mixer tap and drainer, integral oven, hob with extractor, integral fridge/freezer, plumbing for a washing machine, window and door to the rear aspect, radiator, power points and a door that leads to:

WC

Comprising a low level WC, wash hand basin and a radiator.

FIRST FLOOR LANDING

There is an access to the loft, radiator and doors that lead to:

PRIMARY BEDROOM 12'7 x 10'8

Having a window to the rear aspect, radiator, power points and built in double wardrobe.

BEDROOM 12'8 - 9'5 x 9'2

Benefiting from two windows to the front aspect, radiator and power points.

BATHROOM

Comprising a low level WC, wash hand basin, bath with a shower over, complimentary tiling, window to the side aspect and a heated towel rail.

REAR GARDEN

A lovely garden with a patio, laid to lawn and decked area with a Bar Shed to the rear.

PARKING

The vendor has advised there is allocated off road parking ahead of the property. (Can show plans for more detail).

KIRBY MUXLOE VILLAGE

Kirby Muxloe is a prestigious and well regarded village lying approximately five miles from Leicester city centre, offering a wide range of local amenities including a popular school, sporting facilities, shopping, public houses and a renowned 18-hole golf course and the village also has ready access to some delightful countryside. The popularity of the area is further enhanced by accessibility to major road links both to Fosse Park and to Leicester city centre, eight miles to the east. The position is particularly well placed for access to the M1/M69 motorway networks and Fosse Retail Park.

VIEWINGS

We always like any potential purchaser to follow our four steps

- 1) Read property description
- 2) Look at Floorplan
- 3) Watch our virtual viewing video
- 4) Please provide and assist proof of affordability

After these stages, we are happy to arrange a viewing suitable to both purchaser and vendor.

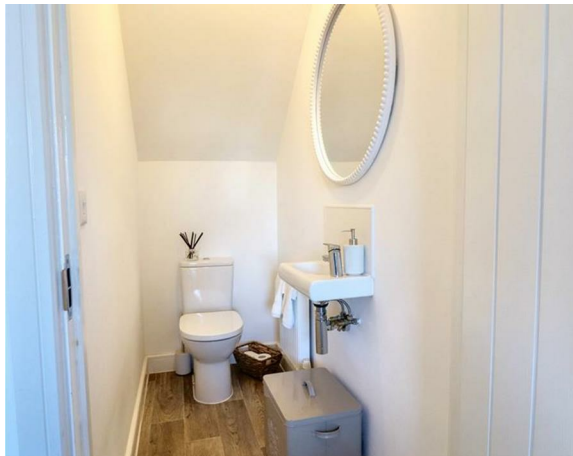
MEASUREMENTS & FLOORPLANS

Purchasers should note that if a floor plan is included within property particulars it is intended to show the relationship between rooms and does not reflect exact dimensions or indeed seek to exactly replicate the layout of the property. Floor plans are produced for guidance only and are not to scale. Every care has been taken to reflect the true dimensions of this property but they should be treated as approximate and for general guidance only.

MONEY LAUNDERING

In line with current money laundering regulations, prospective buyers will be asked to provide us with photo I.D. (e.g. Passport, driving licence, bus pass etc) and proof of address (e.g. Current utility bill, bank statement etc). We ask for your cooperation in this matter as this information will be required before a sale can be agreed.

1. MONEY LAUNDERING REGULATIONS: Intending purchasers will be asked to produce identification documentation at a later stage and we would ask for your co-operation in order that there will be no delay in agreeing the sale.
2. General: While we endeavour to make our sales particulars fair, accurate and reliable, they are only a general guide to the property and, accordingly, if there is any point which is of particular importance to you, please contact the office and we will be pleased to check the position for you, especially if you are contemplating travelling some distance to view the property.
3. The measurements indicated are supplied for guidance only and as such must be considered incorrect.
4. Services: Please note we have not tested the services or any of the equipment or appliances in this property, accordingly we strongly advise prospective buyers to commission their own survey or service reports before finalising their offer to purchase.
5. THESE PARTICULARS ARE ISSUED IN GOOD FAITH BUT DO NOT CONSTITUTE REPRESENTATIONS OF FACT OR FORM PART OF ANY OFFER OR CONTRACT. THE MATTERS REFERRED TO IN THESE PARTICULARS SHOULD BE INDEPENDENTLY VERIFIED BY PROSPECTIVE BUYERS OR TENANTS. JUDGE ESTATE AGENTS LIMITED NOR ANY OF ITS EMPLOYEES OR AGENTS HAS ANY AUTHORITY TO MAKE OR GIVE ANY REPRESENTATION OR WARRANTY WHATEVER IN RELATION TO THIS PROPERTY.





LOCATION



MEASUREMENTS

Every care has been taken to reflect the true dimensions of this property but they should be treated as approximate and for general guidance only. This floorplan is only for illustrative purposes and is not to scale. Measurements of rooms, doors, windows, and any items are approximate and no responsibility is taken for any error, omission or mis-statement. Icons of items such as bathroom suites are representations only and may not look like the real items. Made with Snappy 360.



VIEWINGS

Viewings strictly by appointment via Judge Estate Agents.

We always like any potential purchaser to follow our four steps:

- 1 Read property description**
- 2 Look at floorplan**
- 3 Watch our virtual viewing video**
- 4 Please provide and assist proof of affordability**

After these stages, we are happy to arrange a viewing suitable to both purchaser and vendor.

LET'S TALK



0116 236 7000



judgeestateagents.co.uk



sales@judgeestateagents.co.uk



13 The Nook, Anstey, Leicester, Leicestershire, LE7 7AZ



All properties are listed on Rightmove, Zoopla & our website.

ZOOPLA

rightmove

TERMS & CONDITIONS

Money laundering

In line with current money laundering regulations, prospective buyers will be asked to provide us with photo I.D. (e.g. Passport, driving licence, bus pass etc) and proof of address (e.g. Current utility bill, bank statement etc). We ask for your cooperation in this matter as this information will be required before a sale can be agreed.

1. Money laundering regulations: Intending purchasers will be asked to produce identification documentation at a later stage and we would ask for your co-operation in order that there will be no delay in agreeing the sale.

2. General: While we endeavour to make our sales particulars fair, accurate and reliable, they are only a general guide to the property and, accordingly, if there is any point which is of particular importance to you, please contact the office and we will be pleased to check the position for you, especially if you are contemplating travelling some distance to view the property.

3. The measurements indicated are supplied for guidance only and as such must be considered incorrect.

4. Services: Please note we have not tested the services or any of the equipment or appliances in this property, accordingly we strongly advise prospective buyers to commission their own survey or service reports before finalising their offer to purchase.

5. These particulars are issued in good faith but do not constitute representations of fact or form part of any offer or contract. The matters referred to in these particulars should be independently verified by prospective buyers or tenants. Judge estate agents limited nor any of its employees or agents has any authority to make or give any representation or warranty whatever in relation to this property.