



NEPTUNE ROAD

BARRY

NEPTUNE ROAD

BARRY, CF62 5BR

£170,000 -

LEASEHOLD



2 Bed



2 Bath



596.00 sq ft

Nestled on the charming Neptune Road in Barry, this exquisite top floor flat offers a delightful blend of modern living and stunning views. With two well-appointed bedrooms and two contemporary bathrooms, this property is perfect for individuals or small families seeking comfort and style.

As you step inside, you will be greeted by a beautifully designed reception room that boasts an abundance of natural light, creating a warm and inviting atmosphere. The flat is perfectly modern throughout, featuring stylish finishes and thoughtful details that enhance the overall appeal. Each window frames magical views, allowing you to enjoy the picturesque surroundings from the comfort of your home.

The property has a designated parking space, providing convenience and ease for residents. Additionally, the flat is ideally located within walking distance to local shops, schools, and the beach, making it an excellent choice for those who appreciate the convenience of urban living combined with the charm of coastal life.

This top floor flat on Neptune Road is not just a home; it is a lifestyle choice that offers both comfort and accessibility. Whether you are looking to relax in your stylish abode or explore the vibrant community around you, this property is sure to impress. Don't miss the opportunity to make this stunning flat your new home.

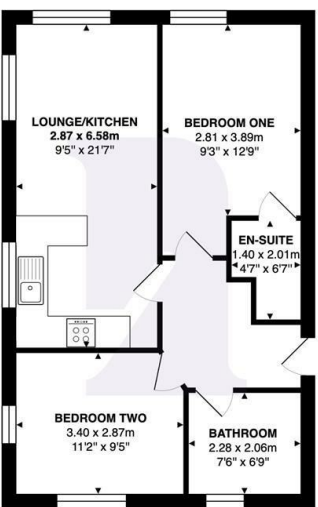




Energy Efficiency Rating		
	Current	Potential
Very energy efficient - lower running costs		
(92 plus) A		
(81-91) B	82	82
(69-80) C		
(55-68) D		
(39-54) E		
(21-38) F		
(1-20) G		
Not energy efficient - higher running costs		
England & Wales	EU Directive 2002/91/EC	



Neptune Road, Barry, CF62 5BR



Total Area: 55.3 m² ... 596 ft²

All measurements are approximate and for display purposes only

BARRY & THE VALE'S HOME FOR

STYLISH SALES
& LETTINGS



KNIGHTS