



ORCHARD DRIVE

BARRY

# ORCHARD DRIVE

BARRY, CF 62 9A A

£289,950 -

FREEHOLD



3 Bed



1 Bath



1006.00 sq ft

Welcome to Orchard Drive, Barry - a lovely semi-detached house that is sure to capture your heart! This delightful property boasts a spacious layout with two reception rooms, three spacious bedrooms, and a modern kitchen.

Situated on an impressive plot, this home features large front and rear gardens, perfect for enjoying the outdoors or entertaining guests. With off-road parking for up to 5 vehicles and a convenient garage, parking will never be an issue for you or your guests.

Step inside to discover the immaculate presentation of this house, from the brand new roof to the well-maintained interior. The rooms are generously sized, offering plenty of space for all your needs and personal touches.

Whether you're looking for a peaceful retreat or a place to host gatherings, this property has it all. Don't miss out on the opportunity to make this house your home - book a viewing today and experience the charm of Orchard Drive for yourself!

## ENTRANCE

### PORCH

10'0" x 4'10"

### HALLWAY

12'03" x 8'06"

### LIVING ROOM

12'08" x 11'07"

### SECOND RECEPTION ROOM

11'0" x 10'01"

### KITCHEN/DINER

11'09" x 9'11"

### FIRST FLOOR LANDING

8'04" x 6'07"

### BEDROOM ONE

12'08" x 11'07"

### BEDROOM TWO

11'0" x 11'07"

### BEDROOM THREE

8'10" x 8'04" (3'05")

### BATHROOM

8'02" x 7'05"

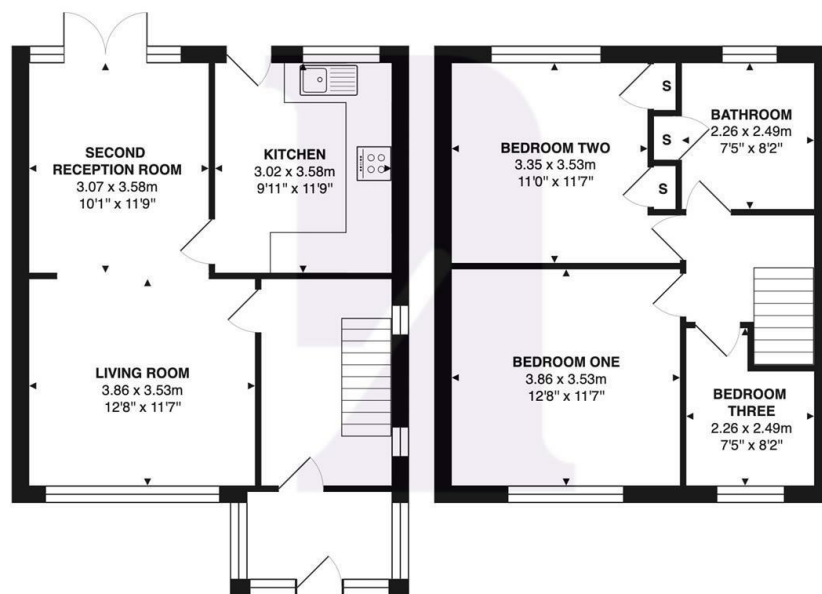
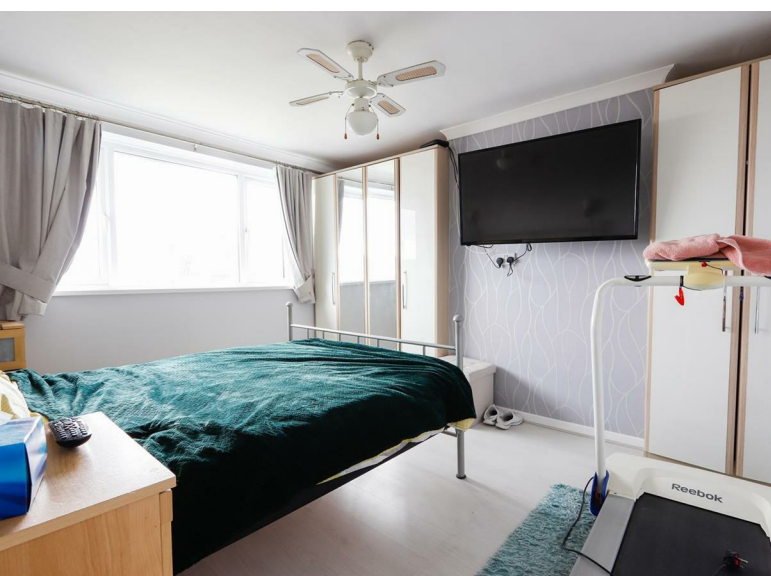
### GARAGE

17'09" x 8'03"





Energy Efficiency Rating		
	Current	Potential
Very energy efficient - lower running costs		
(92 plus) <b>A</b>		
(81-91) <b>B</b>		
(69-80) <b>C</b>		
(55-68) <b>D</b>		
(39-54) <b>E</b>		
(21-38) <b>F</b>		
(1-20) <b>G</b>		
Not energy efficient - higher running costs		
<b>England &amp; Wales</b>	EU Directive 2002/91/EC	



**Orchard Drive, Barry, CF62 9AA**

Total Area: 93.5 m<sup>2</sup> ... 1006 ft<sup>2</sup>

All measurements are approximate and for display purposes only

BARRY & THE VALE'S HOME FOR

STYLISH SALES  
& LETTINGS



KNIGHTS