



HAVEN WALK

BARRY

HAVEN WALK

, C F 62 5A Z

£300,000 -

FREEHOLD



4 Bed



2 Bath



1156.00 sq ft

Welcome to this property located on Haven Walk in Barry, offered with no chain! This beautiful house boasts a brand new condition, perfect for those looking for a fresh start in a new home. With four spacious double bedrooms, there is plenty of room for the whole family to enjoy.

Situated on the highly desirable waterfront estate, this property offers not only a comfortable living space but also a picturesque surrounding. Imagine waking up to the serene views every morning!

Convenience is key with off-road parking available, making coming home a breeze. Additionally, being within walking distance to Barry Island Beach, local shops, and schools, this property offers the perfect blend of relaxation and practicality.

Don't miss out on the opportunity to make this house your home. Book a viewing today and experience the charm and comfort this property has to offer!

ENTRANCE

Via composite door with obscure glass panel leading into;

HALLWAY

Staircase rising to first floor landing with fitted carpet and large storage cupboard below. Radiator. Wood effect flooring. Doors off to all rooms.

LIVING ROOM

16'06" x 10'02"

UPVC double glazed window and double doors to the rear, overlooking and leading to the rear garden. Radiator. Wood effect flooring.

KITCHEN/DINER

15'03" x 9'05"

UPVC double glazed window to the front elevation. Spotlights to ceiling. Modern range of wall and base units with work surfaces over. Built in oven with four ring gas hob and extractor fan above. Stainless steel one and a half bowl sink and drainer with mixer tap over. Ample space and plumbing for under counter white goods and upright fridge/freezer. Room for dining furniture. Radiator. Wood effect flooring.

W/C

5'06" x 2'10"

UPVC double glazed obscure window to the front elevation. Low level W/C. Wash hand basin with twin taps. Radiator. Wood effect flooring.

FIRST FLOOR LANDING

Staircase rising to second floor. Fitted carpet. Doors off to all rooms.

BEDROOM TWO

13'09" x 9'06"

UPVC double glazed window to the rear elevation. Radiator. Fitted carpet.

BEDROOM THREE

11'10" x 9'06"

UPVC double glazed window to the front elevation. Radiator. Fitted carpet.

BEDROOM FOUR

10'03" x 6'09"

UPVC double glazed window to the rear elevation. Radiator. Fitted carpet.

BATHROOM

6'08" x 5'06"

UPVC double glazed obscure window to the front elevation. Three piece suite comprising: Low level W/C, Pedestal wash hand basin with twin taps over and bath with twin taps and shower over. Tiling to splash back areas. Radiator. Wood effect flooring.

SECOND FLOOR LANDING

Fitted carpet. Door into;

BEDROOM ONE

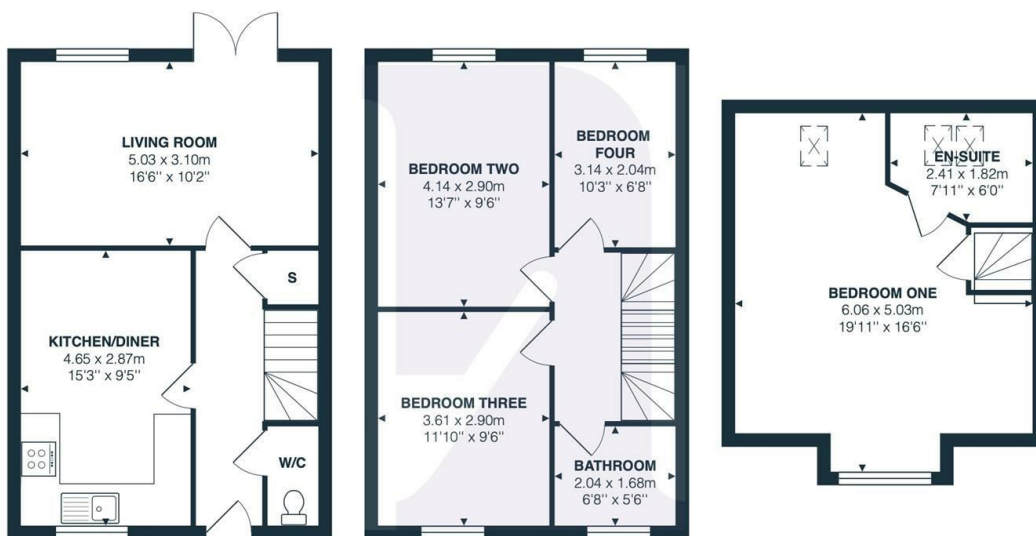
19'10" x 13'2" (7'08" x 10'02")

UPVC double glazed window to the front elevation. Velux window to the rear elevation. Access into eaves storage. Two radiators. Fitted carpet. Door into;





Energy Efficiency Rating		
	Current	Potential
Very energy efficient - lower running costs		
(92 plus) A		95
(81-91) B	85	
(69-80) C		
(55-68) D		
(39-54) E		
(21-38) F		
(1-20) G		
Not energy efficient - higher running costs		
England & Wales	EU Directive 2002/91/EC	



Haven Walk, Barry, CF62 5AZ

Total Area: 107.4 m² ... 1156 ft²

All measurements are approximate and for display purposes only

BARRY & THE VALE'S HOME FOR

STYLISH SALES
& LETTINGS



KNIGHTS