



Lock House, St Julian Street, Tenby  
Pembrokeshire, SA70 7AS

Telephone; (01834) 842204  
Email; sales@birtandco.co.uk

www.birtandco.co.uk



# The Old Pilots House Crackwell Street Tenby SA70 7HA

£375,000

House  
Freehold



A unique property in Tenby's town centre, tucked away down a quiet lane between the High Street and Crackwell Street, meaning that the amenities and the harbour are almost at your doorstep.

There are currently 3-4 bedrooms, living room, kitchen/diner, lounge and family bathroom, with a basement that has services for an additional bathroom.

The house is set over 4 floors, and offers a lot of potential for improvement and alteration to suit a variety of living arrangements.



Regulated by R.I.C.S. Giles Birt, B.Sc., M.R.I.C.S



- **Town Centre Location**
- **Potential to Improve**
  - **Basement Level**
- **Tucked Away Position**

- **Set over 4 Floors**
- **3-4 Bedrooms**
- **Fitted Kitchen**
- **Close to Harbour**

#### **Kitchen/Diner 15'8" x 9'2" (4.8 x 2.8)**

Ground floor kitchen with modern fitted wall and base units with timber work surface. Ample space for dining table and chairs with large window to the front and tall radiator.

#### **Lounge 13'9" x 9'6" (4.2 x 2.9)**

Ground floor living room, with window to the front, original fireplace, and feature alcoves.

#### **Lounge 2 11'1" x 9'2" (3.4 x 2.8)**

1st Floor living room with a window to the front, and door to bathroom.

#### **Bathroom 7'10" x 6'6" (2.4 x 2)**

A modern suite comprising a P-shaped bath with shower over, WC, sink in vanity, and tall towel radiator.

#### **Bedroom 1 15'5" x 9'10" (4.7 x 3)**

A 1st floor double bedroom with original fireplace and window to the front.

#### **WC**

Off the first floor half landing is a cloakroom with WC and sink.

#### **Bedroom 2 17'8" x 9'2" (5.4 x 2.8)**

A double bedroom on the top floor with pitched ceiling and window to the front.

#### **Bedroom 3 4.5 x 3**

A 3rd double bedroom with window to the front.

#### **Basement 14'1" x 8'10" (4.3 x 2.7)**

Stepping down from the entrance hall, there is storage space and a cupboard off the stairway.

The basement has built in storage, sink, and services for washing machine/tumble dryer, with the combi boiler housed here.

The corner of the room has a door to an additional bathroom, currently used as storage.

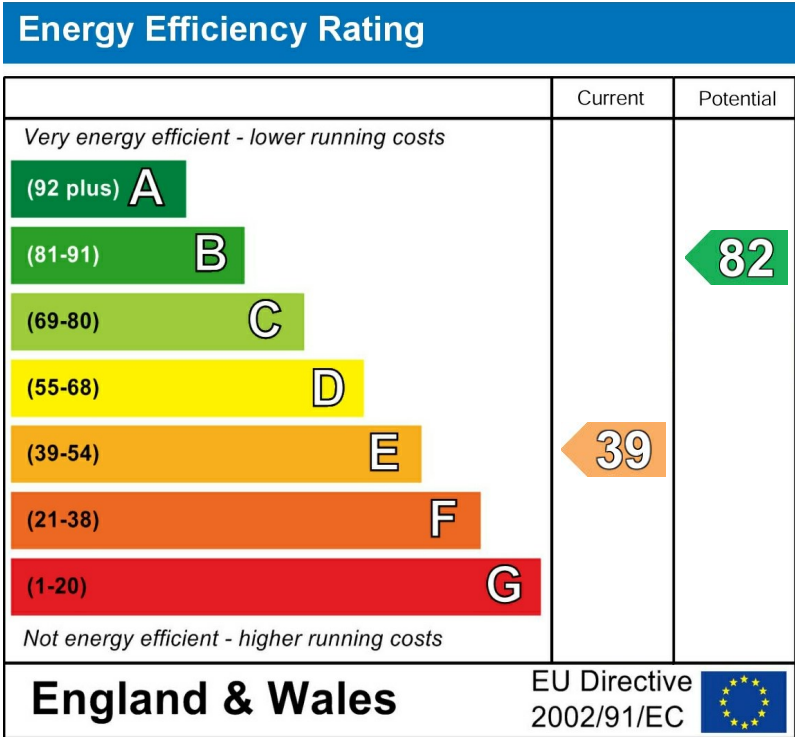
#### **Please Note**

We are advised that mains gas, electric, water and drainage is connected to the property.

The Pembrokeshire County Council Tax is Band F.



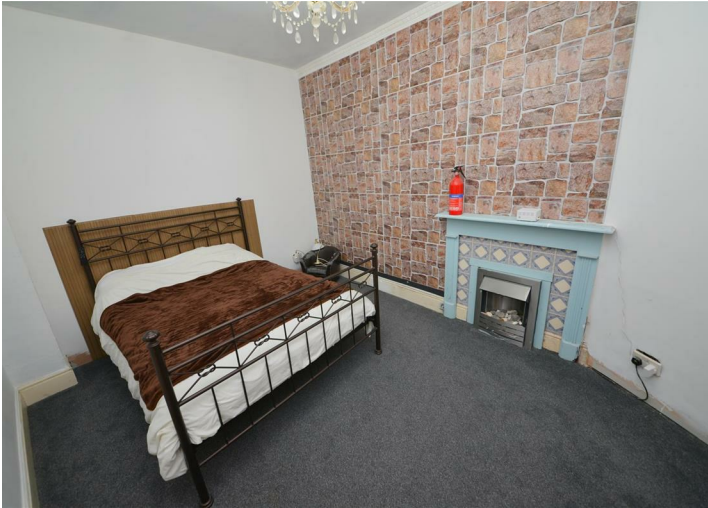
From the High Street, head down the lane between Greggs and Grape Tree. The property is on the left hand side. The lane continues through onto Crackwell Street.



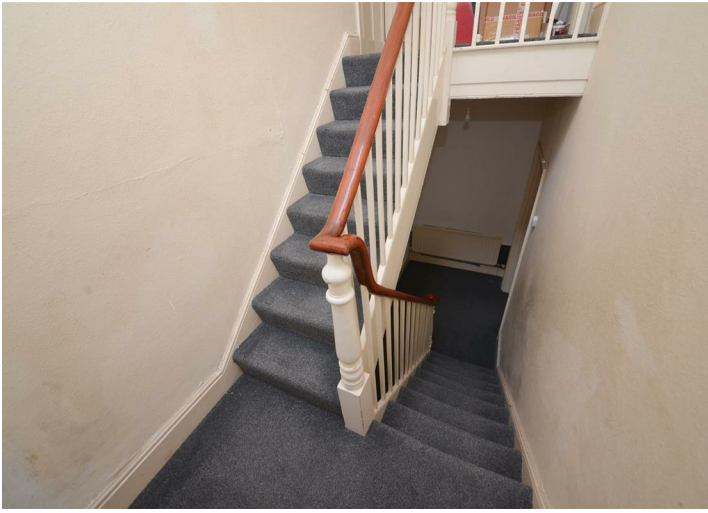












Floor Plan



Measurements are approximate. Not to scale. Illustrative purposes only  
Made with Metropix ©2025

These particulars, whilst believed to be accurate are set out as a general outline only for guidance and do not constitute any part of an offer or contract. Intending purchasers should not rely on them as statements of representation of fact, but must satisfy themselves by inspection or otherwise as to their accuracy. No person in this firms employment has the authority to make or give any representation or warranty in respect of the property.