



High House, 6 St. Marys Street, Tenby, SA70 7HN

£725,000



High House is an exquisite grade II listed town house set over 6 floors with original features including the beautiful staircase. The sash and bay windows add character to the property while allowing natural light to flood in, and a courtyard garden to the rear provides an excellent outdoor area to enjoy the sun in private.

This large property offers generous living space with 5 bedrooms and 3 bathrooms, perfect for a growing family or those who enjoy entertaining guests. Additionally, the basement has been converted into a large wet room with a walk in shower and is ideal for storing wetsuits and beach equipment.

The house is currently run as a successful holiday let with a gross annual income averaging £50,000 per year over the last 8 years.

Situated within the town walls, High House has easy access to all the amenities and attractions that the vibrant town of Tenby has to offer.



LOCK HOUSE C. 1750



Regulated by R.I.C.S. Giles Birt, B.Sc., M.R.I.C.S



- **Within Tenby Town Walls**
- **Sash and Bay Windows**
- **Basement Wet Room**
- **5 Bedrooms, 3 Bathrooms**
- **Successful Holiday Let Business.**
- **Walking Distance to Tenby Beaches**
- **Courtyard**
- **Over 6 Floors**
- **Original Staircase**

Hallway

Enter High House into the porch and through into the Hallway. Natural stone flooring runs through into the kitchen, and doors open to the dining room and kitchen.

Dining room 13'5" x 12'1" (4.1 x 3.7)

An impressive reception room with timber flooring, sash window with shutters to the front, gas fire and column radiator with a mix of centre ceiling light and wall light points. An opening to the rear leads through to the kitchen.

Kitchen 12'9" x 10'2" (3.9 x 3.1)

A modern kitchen with French doors opening to the fully enclosed patio garden. The kitchen comprises breakfast bar, integrated electric hob and oven, fridge/freezer, dishwasher, and sink. There is a column radiator, small sash window to the rear and spot lighting.

Basement / Utility 10'9" x 8'3" (3.29 x 2.54)

Between the kitchen and dining room, a door opens to the stairs that take you down to the basement. This is an impressive conversion ideal for storing wetsuits and other beach equipment. The room is a fully tiled space with wet room shower, utility space with plumbing for washing machine, a natural light tunnel and three radiators.

Lounge 13'9" x 13'9" max (4.2 x 4.2 max)

A first floor sitting room with wooden flooring, large bay window with window seats, gas fire and column radiator. The window overlooks St Mary's Street, with views over the street to the sea beyond The Paragon.

Bedroom 2 10'5" x 9'2" (3.2 x 2.8)

A first floor bedroom with wooden flooring and sash window which looks over the rear patio area. Column radiator and centre ceiling light.

Bathroom 6'10" x 4'3" (2.1 x 1.3)

A spacious and bright bathroom on the first floor, partly tiled with bath and shower attachment, WC, wash hand basin and heated towel rail. There is also a small sash window to the rear.

Master Bedroom 13'10" x 13'5" max (4.22 x 4.1 max)

A spacious double bedroom on the 2nd floor, with wood flooring, a large sash window to the front, with centre lighting and column radiator.

Bedroom 3 10'5" x 10'5" (3.2 x 3.2)

An en-suite bedroom with wooden flooring, sash window to the rear, column radiator and door to en-suite.

En-suite 9'10" x 2'11" (3 x 0.9)

A convenient shower room with tiled shower enclosure, WC, wash hand basin with tiled splash back and heated towel rail.

Bedroom 4 7'10" x 7'2" (2.4 x 2.2)

Pitched ceiling, sash window to the front, wood flooring, column radiator.

Bedroom 5 13'9" x 10'9" (4.2 x 3.3)

Currently used as a twin room, there is ample room for a double bed. The room has pitched ceiling, small sash window to the rear, wooden flooring and column radiator.

Bathroom 6'2" x 10'9" (1.9 x 3.3)

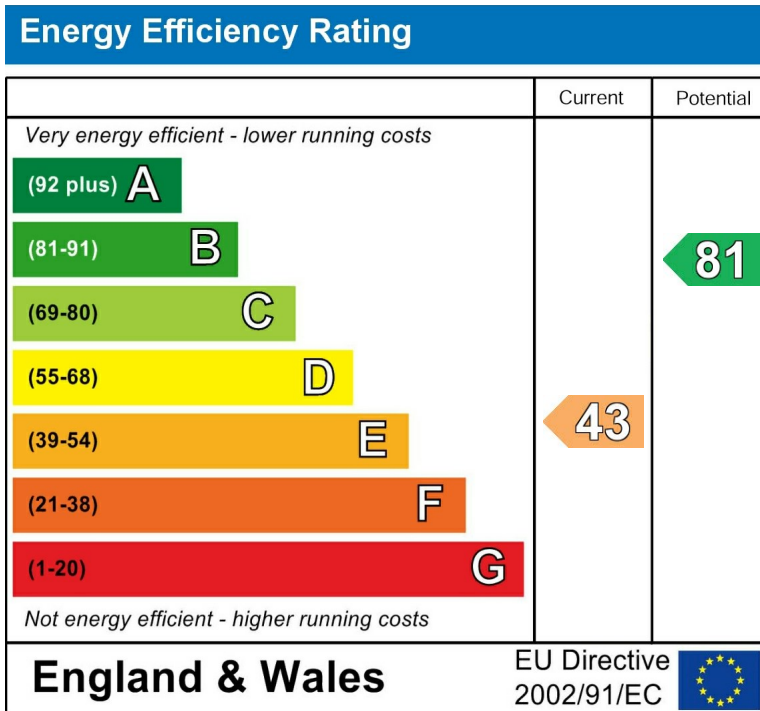
A bright and spacious bathroom with free standing bath, WC and double wash hand basin, pitched ceiling with Velux window and a heated towel rail. Off the bathroom there is an airing cupboard which houses the hot water cylinder.

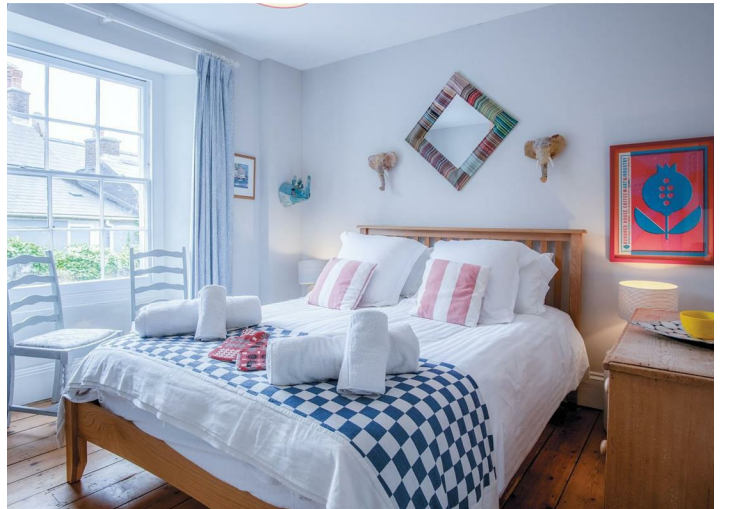
Attic Room 13'5" x 7'6" (4.1 x 2.3)

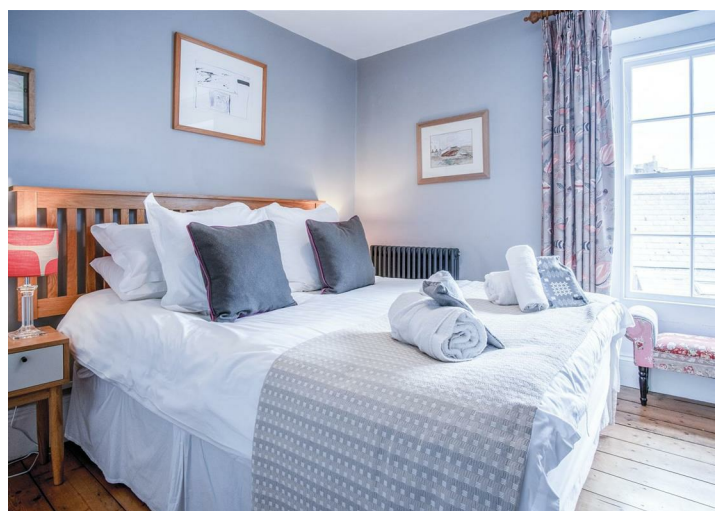
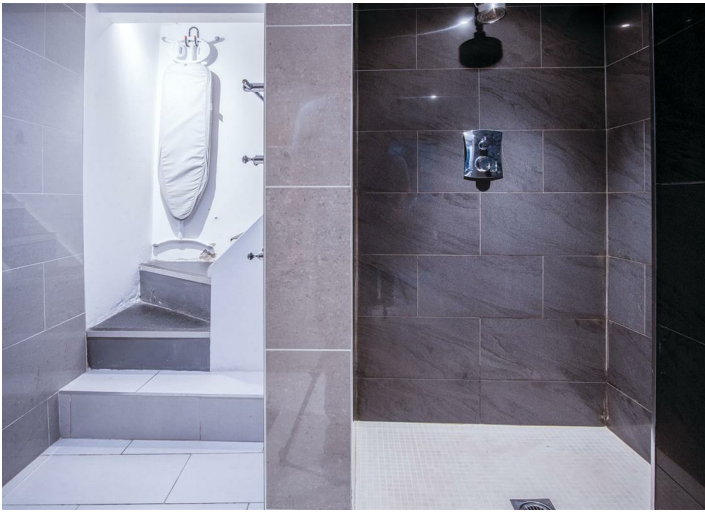
Stairs lead up to the attic room, which can be used as a separate TV room or a snug when larger families stay at the house together. The room has two Velux windows and a radiator and restricted headroom in the eaves.

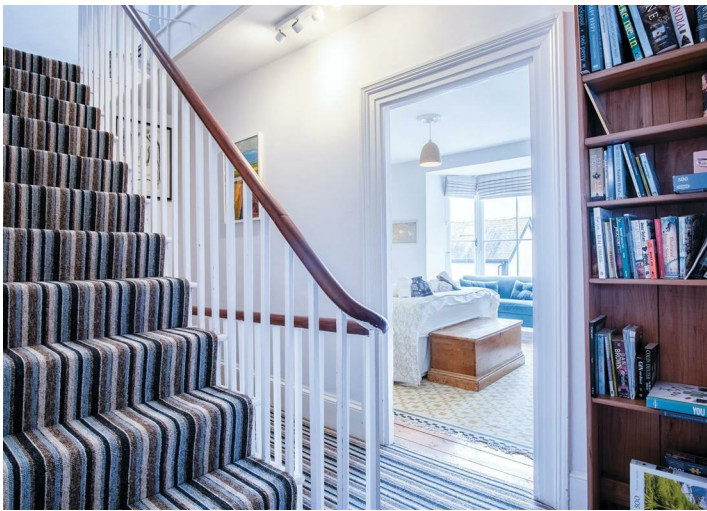
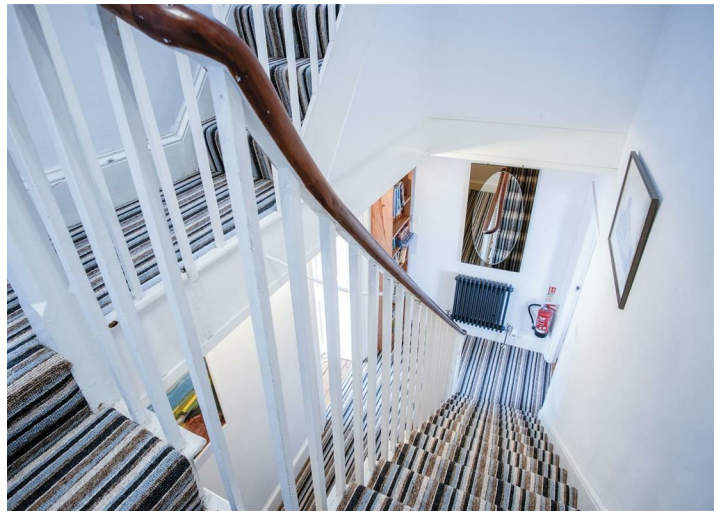
Courtyard

Kitchen opens onto an elegant, natural stone walled courtyard with flagstone floor and built in uplighting. There is ample space for a dining table, chairs and a BBQ. The high stone walls offer complete privacy and there is an additional stone outbuilding which houses the gas boiler.



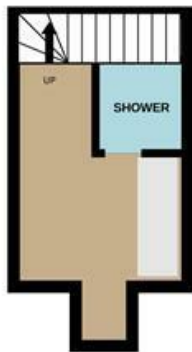




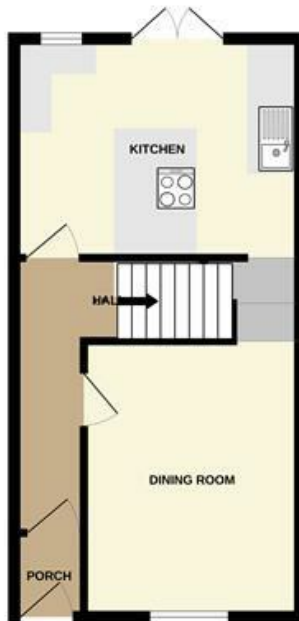


Floor Plan

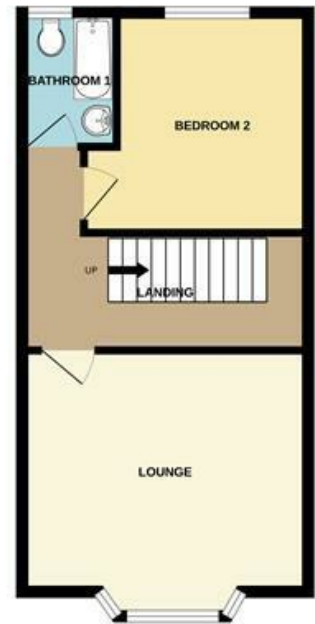
BASEMENT



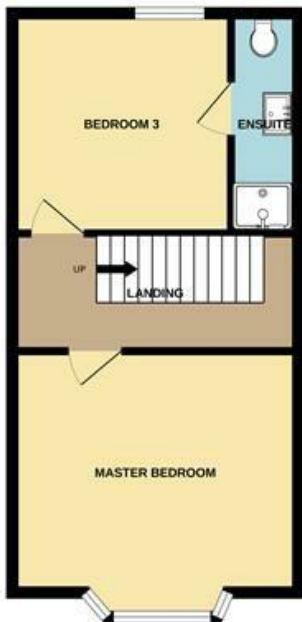
GROUND FLOOR



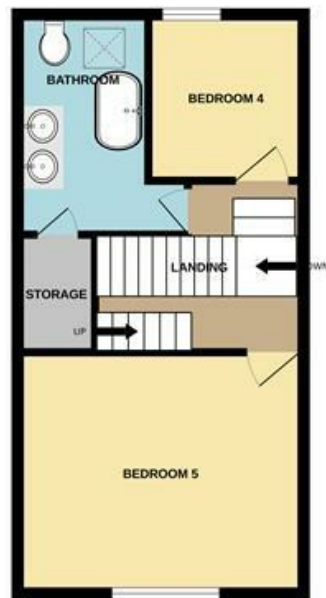
1ST FLOOR



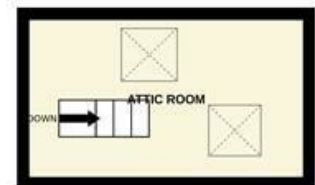
2ND FLOOR



3RD FLOOR



4TH FLOOR



Measurements are approximate. Not to scale. Illustrative purposes only
Made with Metropix ©2024

These particulars, whilst believed to be accurate are set out as a general outline only for guidance and do not constitute any part of an offer or contract. Intending purchasers should not rely on them as statements of representation of fact, but must satisfy themselves by inspection or otherwise as to their accuracy. No person in this firm's employment has the authority to make or give any representation or warranty in respect of the property.