



**Premier
Properties**
Perth



69F North Methven Street, Perth, PH1 5PX Offers Over £139,999

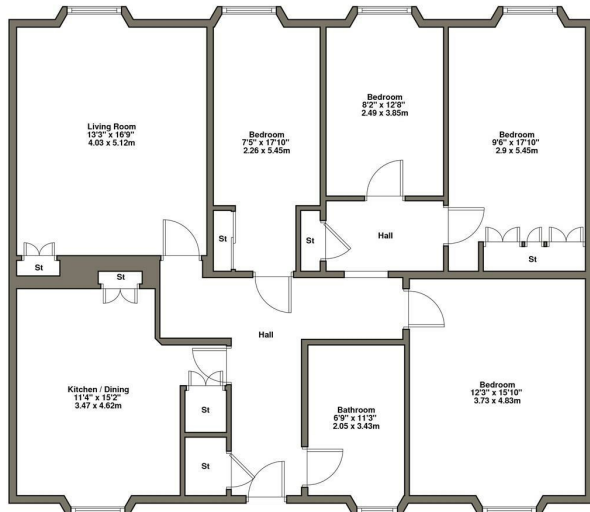


Comprises very spacious accommodation consisting of: Second floor: Entrance hallway, bathroom, kitchen, living room and four bedrooms.

Location: The property has a superb location near the North Inch parklands and is just a stone's throw away from local cafes, shops, restaurants, the Theatre and Concert Hall. It is situated in an ideal location for those commuting to Dundee, Pitlochry, Inverness, Edinburgh, Glasgow and Aberdeen with the road links, train and bus stations all close by.

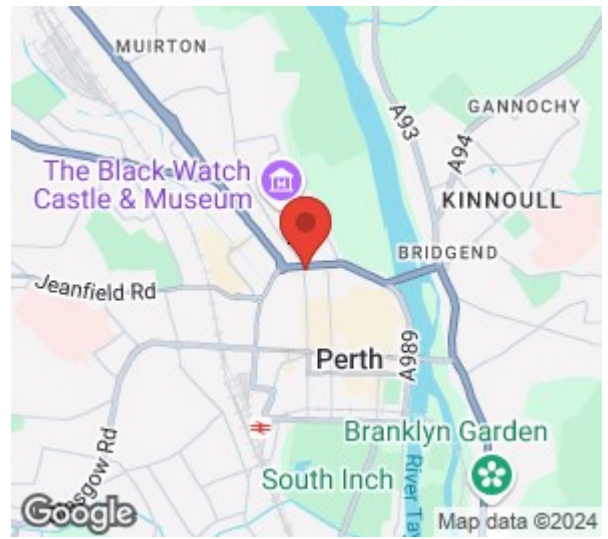
- 4 Bedrooms
- City Centre Location
- Gas Central Heating
- Move In Condition
- On Street Meter Parking
- Single Glazed Windows



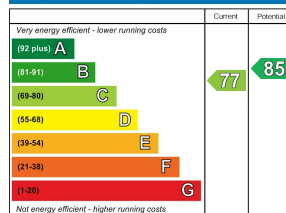


69F North Methven Street, Perth, PH1 5PX

Plan not to scale.
For illustrative purposes only.

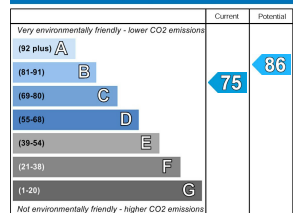


Energy Efficiency Rating



Scotland EU Directive 2002/91/EC

Environmental Impact (CO₂) Rating



Scotland EU Directive 2002/91/EC



These particulars, whilst believed to be accurate are set out as a general outline only for guidance and do not constitute any part of an offer or contract. Intending purchasers should not rely on them as statements of representation of fact, but must satisfy themselves by inspection or otherwise as to their accuracy. No person in this firm's employment has the authority to make or give any representation or warranty in respect of the property.