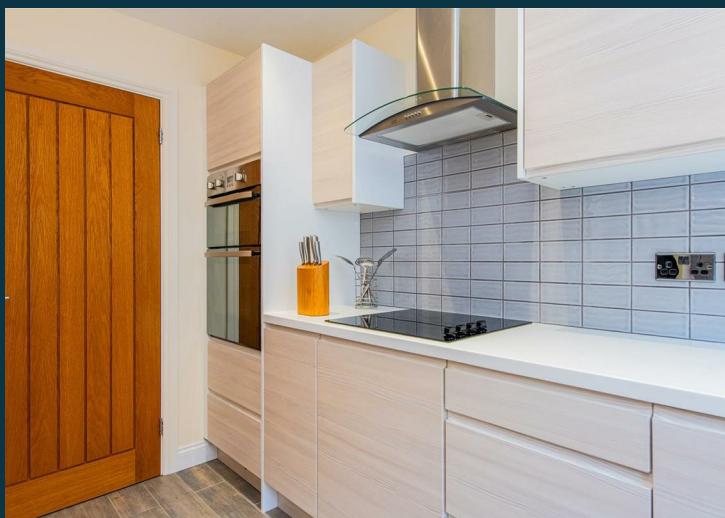


Langdale  
Fleckney  
LE8 8TF

Offers Over £325,000

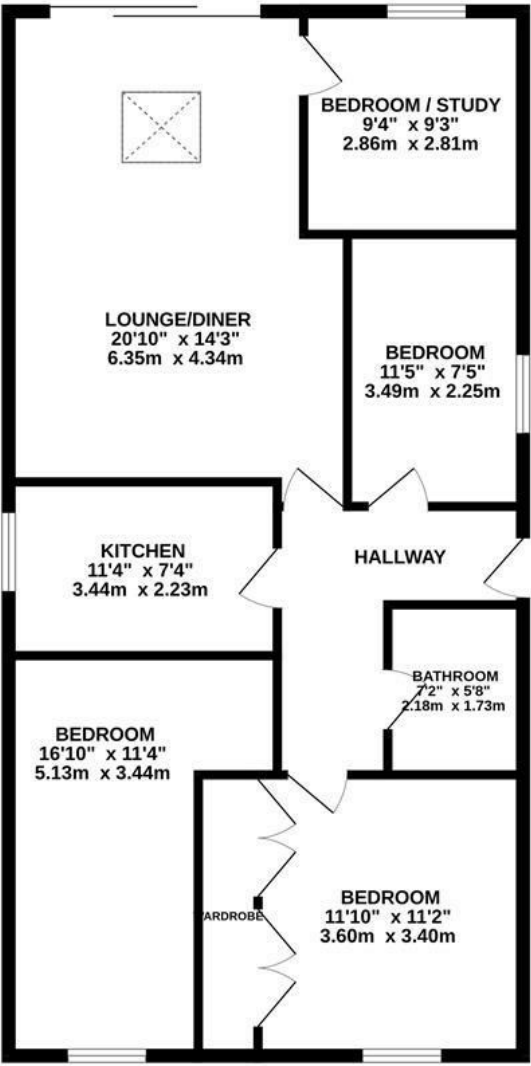


OSCAR JAMES

...expect excellence

# FLOOR PLANS

GROUND FLOOR  
950 sq.ft. (88.3 sq.m.) approx.



TOTAL FLOOR AREA : 950 sq.ft. (88.3 sq.m.) approx.

Whilst every attempt has been made to ensure the accuracy of the floorplan contained here, measurements of doors, windows, rooms and any other items are approximate and no responsibility is taken for any error, omission or mis-statement. This plan is for illustrative purposes only and should be used as such by any prospective purchaser. The services, systems and appliances shown have not been tested and no guarantee as to their operability or efficiency can be given.  
Made with Metropix 6/2025



## AT A GLANCE...



Beautiful open plan lounge / diner



New kitchen with integrated appliances



Four bedrooms



Family bathroom



Well presented garden to the rear, south east facing



Parking for up to 3 vehicles





# WHAT'S GREAT?

Nestled in the peaceful and highly sought-after cul-de-sac of Langdale in the charming village of Fleckney, this stunning detached four-bedroom bungalow offers a rare opportunity to acquire a beautifully presented home that perfectly balances space, comfort, and style. Immaculately maintained throughout, the property is ideal for families, downsizers, or anyone looking for a move-in-ready residence in a quiet yet well-connected location.

Upon entering, you're welcomed into a spacious and inviting open-plan living and dining area, bathed in natural light and thoughtfully designed to offer a flexible layout suited to both everyday living and entertaining. This central space flows effortlessly into a well-equipped separate kitchen, which provides direct access to the meticulously cared-for rear garden.

The bungalow boasts four generously sized bedrooms, each offering a comfortable and tranquil retreat. The master bedroom is particularly impressive, featuring built-in wardrobes that offer excellent storage without compromising on space. The stylish and modern family bathroom is fitted with quality fixtures and designed with both functionality and relaxation in

mind—catering effortlessly to the demands of contemporary family life.

Outside, the property continues to impress with ample off-road parking for up to three vehicles, making daily life convenient for residents and visitors alike.

Offered to the market with no onward chain, this fantastic home is ready for its new owners to move straight in. With its blend of generous living spaces, peaceful surroundings, and exceptional condition throughout.

...expect excellence





# SELLER'S SECRET

The generous bedrooms, built-in storage, ample parking, and no onward chain make it an ideal home for someone wanting to move in with ease.



## Why we like it....

We love this property because it offers the perfect combination of space, comfort, and practicality. Set in a quiet cul-de-sac in Fleckney, this four-bedroom detached bungalow is beautifully maintained and move-in ready, with an airy open-plan living and dining area, a separate kitchen, and a lovely private garden.

# OSCAR JAMES

7 St Marys Road | Market Harborough | LE16  
7DS

01858 458 458

[www.oscar-james.com](http://www.oscar-james.com)

To buy or not to buy....

---

---

---

---

---