

Station House,
Station Road,
Rushton,
Northamptonshire,
NN14 1RL

£750,000

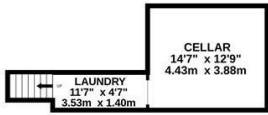


OSCAR JAMES

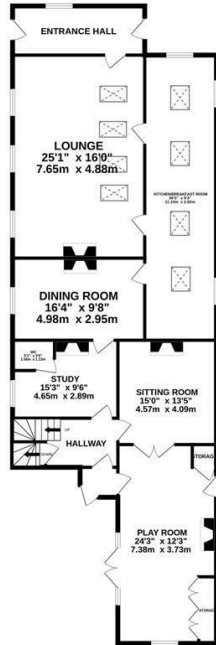
...expect excellence

FLOOR PLANS

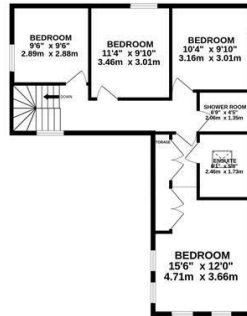
BASEMENT
257 sq.ft. (23.9 sq.m.) approx.



GROUND FLOOR
1584 sq.ft. (147.1 sq.m.) approx.



1ST FLOOR
717 sq.ft. (66.6 sq.m.) approx.



TOTAL FLOOR AREA: 2558 sq.ft. (237.6 sq.m.) approx.

Whilst every attempt has been made to ensure the accuracy of the floorplan contained here, measurements of doors, windows, rooms and any other items are approximate and no responsibility is taken for any error, omission or mis-statement. This plan is for illustrative purposes only and should be used as such by any prospective purchaser. The services, systems and appliances shown have not been tested and no guarantee as to their operability or efficiency can be given.

Made with Metropix ©2023



AT A GLANCE...



Five versatile reception rooms



Large Oak kitchen



Four double bedrooms



Ground floor WC, first floor shower room and en-suite to master bedroom



Lawned garden to the front



Large parking area with covered car port



WHAT'S GREAT?

CHECK OUT OUR AMAZING VIDEO TOUR OF THIS PROPERTY

An incredibly exciting opportunity to own this simply stunning, lovingly converted, former Railway Station situated in the heart of the picturesque village of Rushton.

This gorgeous, Grade II listed property was sympathetically restored and converted by its present owners and now enjoys generous accommodation over two floors with virtually every room guaranteeing to WOW.

Boasting vaulted ceilings, open fires, exposed stone walls and a host of original materials throughout, this wonderful home is steeped in history and has preserved as much of its original heritage as possible while enjoying the comforts of modern day living.

Internally the accommodation comprises; entrance hall, large lounge, second sitting room, study, playroom / ground floor bedroom, dining room and kitchen breakfast room.

On the first floor expect to find four double bedrooms along with a shower room.

The master bedroom enjoys a stylishly appointed ensuite shower room along with a feature free standing

roll-top bath in the bedroom.

In addition, there's a useful cellar which is currently used as a laundry room and store but could easily be converted into so much more!

Outside you'll find a private side terrace, ideal for a hot tub area, there is also a large lawned garden to the front along with a generous driveway / patio area and an enclosed car port.

No amount of words can do this quirky, one off property justice, the pictures don't do it justice, it can only be truly appreciated by way of an internal inspection.

Rushton is a pretty village situated just a few miles from Market Harborough, Kettering and Corby. It enjoys a local pub, primary school and cricket pitch along with superb 5* facilities at Rushton Hall and Spa. It's commuter friendly too with excellent road and rail links.

For more information or to arrange yours, contact sole selling agents, Oscar James today. Be quick though, we don't expect it to be on the

...expect excellence



SELLER'S SECRET

I bought the property as a total wreck, and spent almost two years refurbishing and extending it. It was filmed by George Clarke's Amazing Spaces TV show during the build too.

I've got documented evidence of all the work that's gone into making this a truly magical home.

I've enjoyed living here since it was completed, it's simply too big for me now so it's time to let someone else enjoy this very special property.



Why we like it....

WOW WOW WOW! We absolutely love this fabulous home.

Ever now and again something really special comes along and this is it.

Don't just take our word for it, come and take a look!

To buy or not to buy....

OSCAR JAMES

7 St Marys Road | Market Harborough | LE16

7DS

01858 458 458

www.oscar-james.com