

Location:

The property is in a fantastic location for the local shops, parks, schools and transport links.

Key points:

- 2 Bedrooms
- Poets Corner
- Share of Freehold
- Wonderful period features
- Split level apartment
- Walking distance to Churchfield Road
- 13 Minute walk to Elizabeth Line (Acton Mainline)
- No onward chain
- New windows installed by Anglian Windows (Everest)

Do Better:

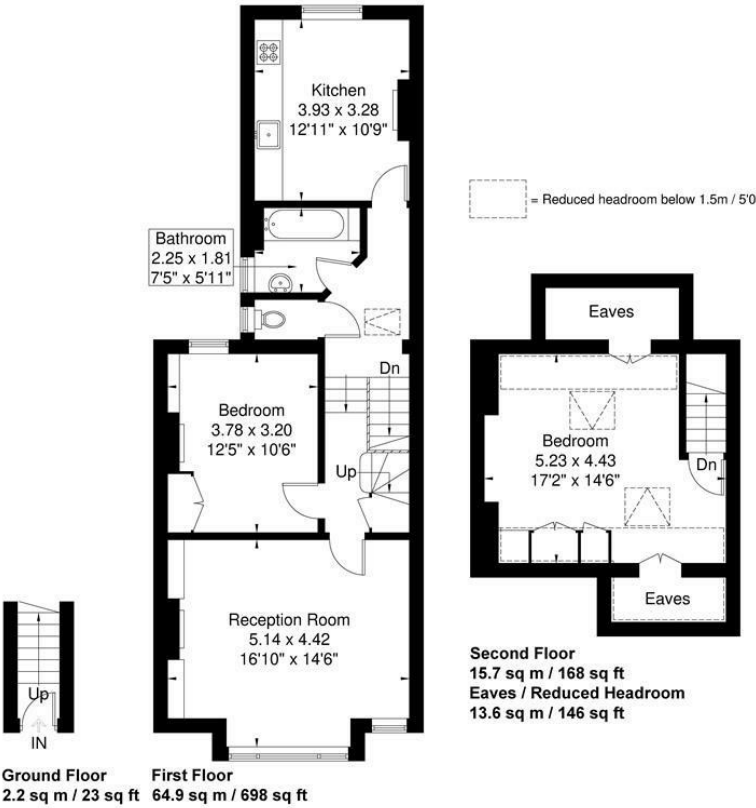
Acton  
sales@astonrowe.co.uk

57-59 Churchfield Road,  
Acton, London, W3 6AY

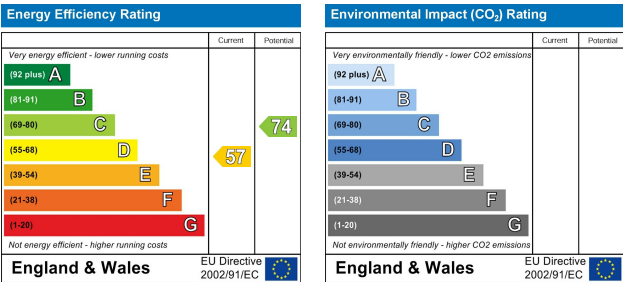
020 8992 3600

Maldon Road

Approximate Gross Internal Area = 82.8 sq m / 889 sq ft  
Eaves / Reduced Headroom = 13.6 sq m / 146 sq ft  
Total = 96.4 sq m / 1035 sq ft



Although every attempt has been made to ensure accuracy, all measurements are approximate.  
The floorplan is for illustrative purposes only and not to scale.  
© www.prerspective.co.uk



Asking Price £675,000

Maldon Road, Acton W3 6SU

- 1 Reception Rooms
- 2 Bedrooms
- 1 Bathrooms



A bright and spacious two-bedroom, split-level apartment situated on one of Acton's premier residential roads in the heart of Poets Corner. Ideal for a first-time buyer or buy to let investor, this property offers a wealth of accommodation space and is set over 1,035 sqft. This modern apartment benefits from two bedrooms, an excellent sized double reception room which creates a great space to relax. The apartment also comprises of a modern separate kitchen and family bathroom. Other benefits include a share of freehold, high ceilings and period features. The property is within walking distance to the new Elizabeth Line and moments from the vibrant café culture of Churchfield Road which offers a great selection of boutique shops, bars and eateries. This property is offered to the market with no onward chain.

**The current owner says:**

**The apartment benefits from share of freehold, high ceiling, period features and offered to the market with no onward chain.**

**What's better:**

**A wonderful 2 bedroom split level apartment in the heart of Poets Corner.**

