

Location:

First Avenue is located within close proximity of both Shepherds Bush & Acton.

- Key points:**
- Fantastic Apartment
 - Two Double Bedrooms
 - Excellent Condition
 - Perfect Location
 - Recently Refurbished

Do Better:

Acton
lettings@astonrowe.co.uk

57-59 Churchfield Road,
Acton, London, W3 6AY

020 8992 3600

First Avenue

Approximate Gross Internal Area = 79.8 sq m / 859 sq ft

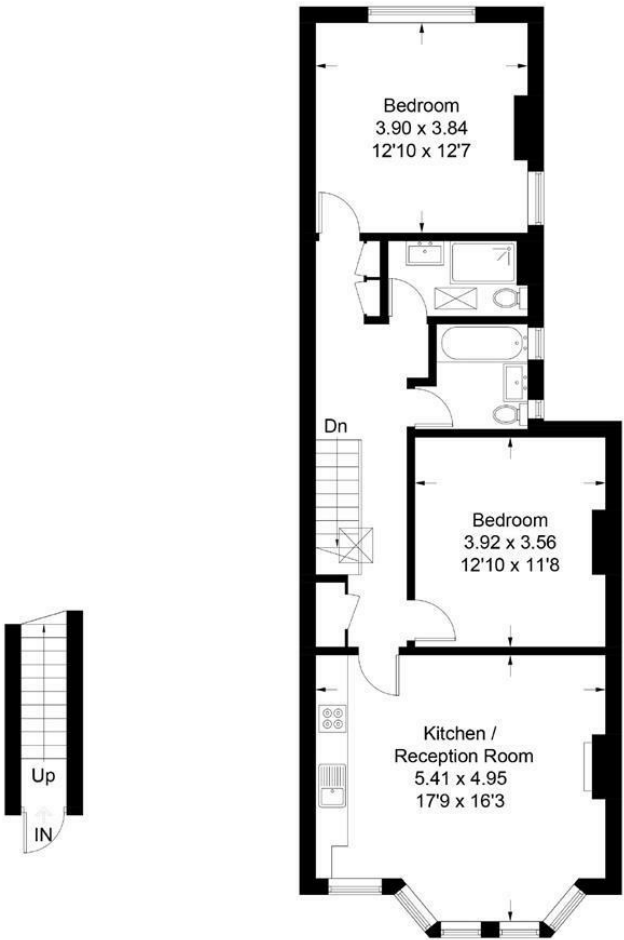
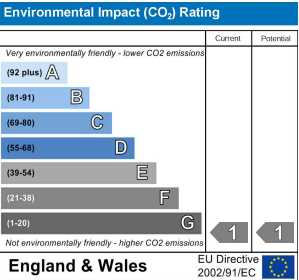
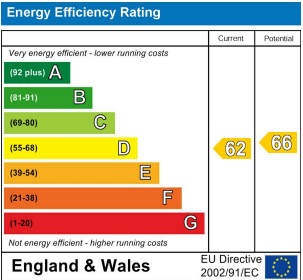


Illustration for identification purposes only, measurements are approximate, not to scale. floorplansUsketch.com © (ID474074)



To Let: £2,300 Per Month

First Avenue, London W3 7JR

- 1 Reception Rooms
- 2 Bedrooms
- 2 Bathrooms

The current tenant says:

We are pleased to present this newly refurbished two bedroom, two bathroom apartment located on the Shepherds Bush and Acton borders. Offering a wealth of space and light, this apartment boasts a two large double bedrooms, a shower room and further bathroom and a modern open plan kitchen living room. The kitchen is fully equipped with dishwasher, washer/dryer and fridge/freezer. Ideal for a couple or professional sharers this property is located in a quiet residential road, close to the transport links of both Shepherds Bush and Acton and the shopping facilities of the Westfield shopping centre.

What's better:

A fantastic two double bedroom apartment

