

Location:

Cecil Road is just moments away from Acton Main Line and North Acton tube station.

Key points:

- Available now
- Three bedroom house
- Two Reception Rooms
- Private Rear Garden
- Close to West Acton Station
- Walking distance to Acton Mainline Elizabeth Line

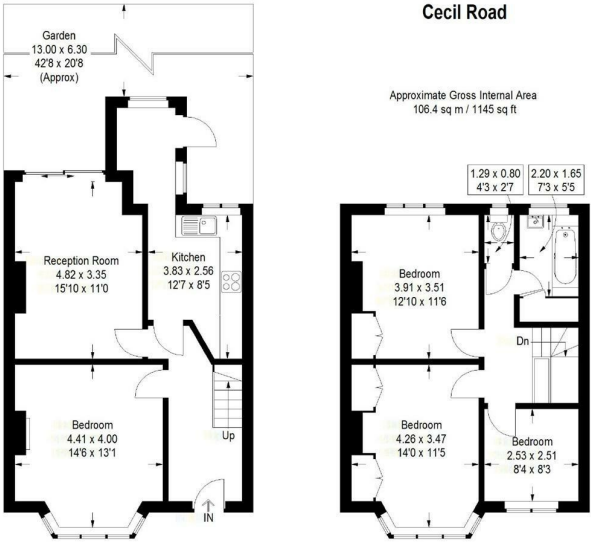
Do Better:

Acton
lettings@astonrowe.co.uk

57-59 Churchfield Road,
Acton, London, W3 6AY

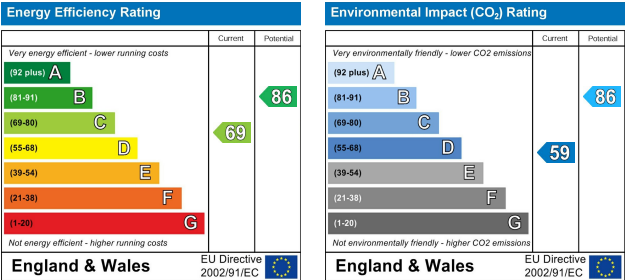
020 8992 3600

Aston Rowe



Ground Floor = 57.2 sq m / 616 sq ft
First Floor = 49.2 sq m / 529 sq ft
Illustration for identification purposes only, measurements are approximate, not to scale.
FloorplansUsketch.com © 2019 (ID 570794)

To Let: £2,800 Per Month
Cecil Road, London W3 6AY



- 2 Reception Rooms
- 3 Bedrooms
- 1 Bathrooms



We are pleased to present the fantastic family home, situated on a popular residential road in West Acton, located moments from North Acton Playing fields. Ideal for a growing family or professionals, this well refurbished home boasts two impressive reception rooms, modern family kitchen, two generous double bedrooms and smaller double. The property has a mature rear garden with outside entertaining space. Located in a popular residential area, and is well located for West Acton tube station. and Acton Mainline Elizabeth line. The A40 is also easy to access.

Council tax Band E
EPC Rating C

The current tenant says:

The property is within walking distance of North Acton tube Station and offers great local amenities based on Horn Lane.

What's better:

A three bedroom home with two reception rooms

