

Location:

Milton Road is less than 200m from Acton Central Station and a fifteen minute walk to Acton Mainline and the Elizabeth Line. The vibrant café culture of Churchfield Road offers a great selection of boutique shops, bars and eateries.

Key points:

- Five bedrooms
- Victorian mid-terraced house
- 1,781 sq.ft / 165.6 sq.m
- Poets Corner

Do Better:

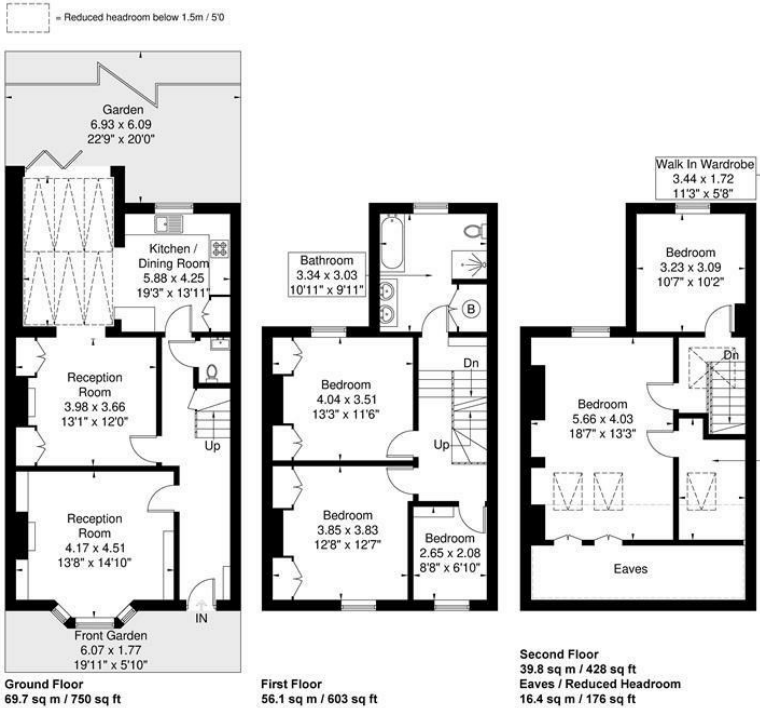
Acton  
sales@astonrowe.co.uk

57-59 Churchfield Road,  
Acton, London, W3 6AY

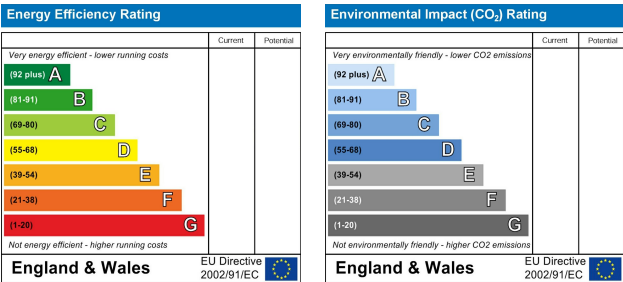
020 8992 3600

Milton Road

Approximate Gross Internal Area = 165.6 sq m / 1781 sq ft  
Eaves / Reduced Headroom = 16.4 sq m / 176 sq ft  
Total = 182 sq m / 1957 sq ft



Although every attempt has been made to ensure accuracy, all measurements are approximate.  
The floorplan is for illustrative purposes only and not to scale.  
© www.prspective.co.uk



£1,300,000

Milton Road, London W3 6QA

- 2 Reception Rooms
- 5 Bedrooms
- 2 Bathrooms





The current owner says:

**The property is in fantastic location for the local shops, schools, parks and transport links.**

A beautifully presented five bedroom Victorian terraced house, located in the heart of Acton's highly desirable Poets Corner.

The ground floor offers a large front reception room, with a traditional bay window and a centrepiece fireplace. The second reception room is equally of good size and lead leads nicely into the kitchen/dining area. The secluded private rear garden has been paved and is east-facing.

High ceilings and period features have been retained throughout and the open and airy feel of the home is ideal both for family living and also for entertaining.

The remainder of the property presents two bedrooms, a family bathroom and study room / third on the first floor. The second floor offers two further bedrooms, including the master bedroom and walk in wardrobe, which can be converted into an en-suite.

Milton Road is less than 200m from Acton Central Station and a fifteen minute walk to Acton Mainline and the Elizabeth Line. The vibrant café culture of Churchfield Road offers a great selection of boutique shops, bars and eateries.

**What's better:**

**A beautifully presented five/six bedroom Victorian terraced house, located in the heart of Acton's highly desirable Poets Corner.**

