

Location:

Key points:

- One bedroom flat
- Period building
- Modern flat
- Walking distance to Acton Mainline station.

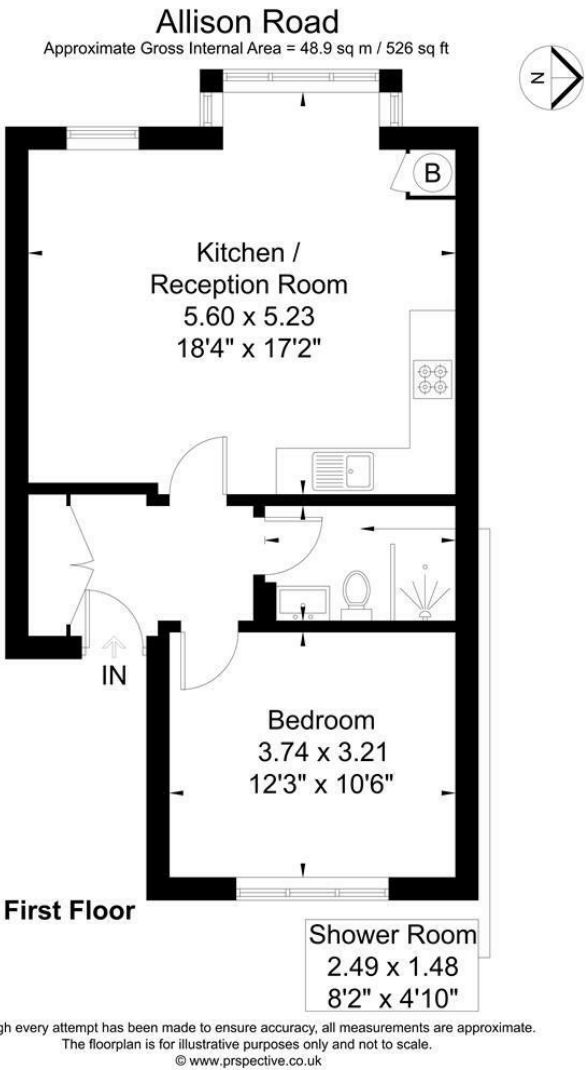
Do Better:

Acton
lettings@astonrowe.co.uk

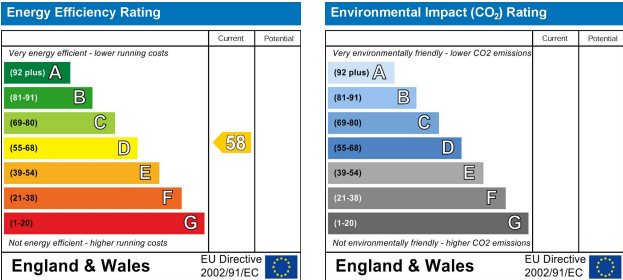
57-59 Churchfield Road,
Acton, London, W3 6AY

020 8992 3600

Aston Rowe



To Let: £1,800
Allison Road, Acton W3 6JF



- 1 Reception Rooms
- 1 Bedrooms
- 1 Bathrooms



A one bedroom flat on Allison Road which is located a short walk to Acton Mainline Elizabeth Line. Ideal for a couple or single professional the property consists off spacious open plan kitchen reception, double bedroom and modern Bathroom.

Allison Road is walking distance to Churchfield Road, Acton Park and Acton Central overground.

The current tenant says:

Walking distance to Churchfield Road and Acton Park

What's better:

A one bedroom flat walking distance to Acton Mainline Elizabeth Line station.

