

Location:

Situated in the heart of Acton Central, the Vale offers plenty of transport links including bus links on Uxbridge road and is a short distance to Stamford Brook and East Acton train stations.

Key points:

- Three Double Bedrooms
- Acton Central
- Modern Decor
- First Floor
- Two Bathrooms

Do Better:

Acton  
lettings@astonrowe.co.uk

57-59 Churchfield Road,  
Acton, London, W3 6AY

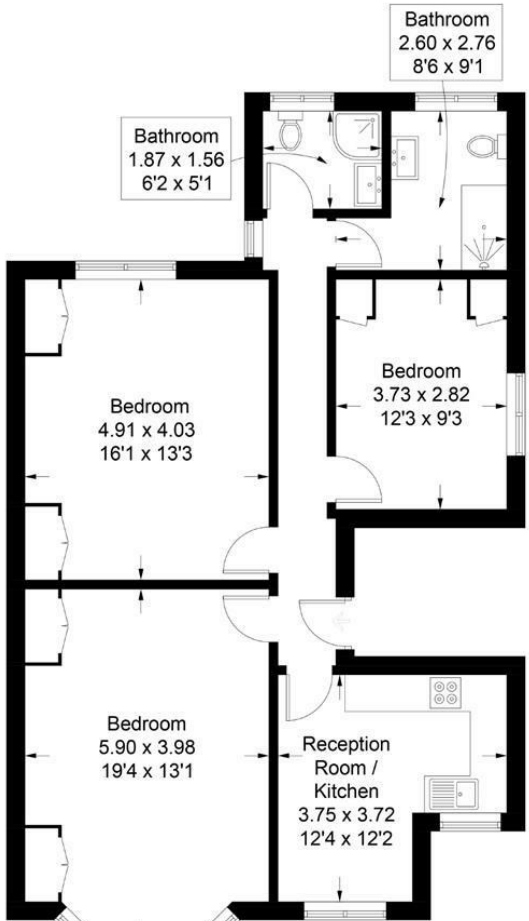
020 8992 3600

Aston Rowe



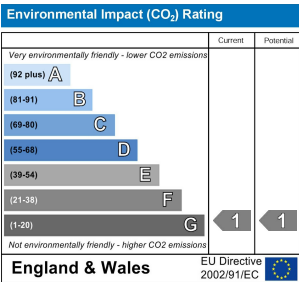
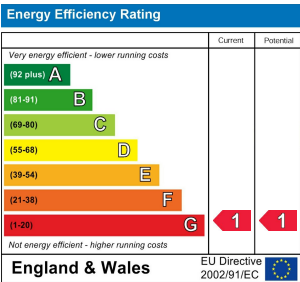
The Vale

Approximate Gross Internal Area = 83.1 sq m / 894 sq ft



First Floor

Illustration for identification purposes only, measurements are approximate, not to scale. floorplansUsketch.com © (ID636582)



To Let: £2,600 Per Month  
The Vale, London W3 7RG

- 1 Reception Rooms
- 3 Bedrooms
- 2 Bathrooms



The current tenant says:

We are pleased to offer this immaculately presented 3 double bedroom apartment, set on the first floor of this impressive conversation. Ideal for a family or professionals, this property is tastefully finished with a modern kitchen and luxury bathrooms and car parking. This property offers quick and easy access to Acton or Shepherds Bush for tube and shopping facilities.

What's better:

**A large three double bedroom apartment  
in an excellent location.**

