

Location:

Birkbeck Grove is conveniently situated close to the wonderful green open spaces of Acton Park and Southfield Park while shops, cafes and restaurants can be found on nearby Churchfield Road and Chiswick High Road.

Key points:

- Two bedrooms
- Ground floor
- Private 38ft west-facing garden
- 744 Sq.ft / 69.2 Sq.m
- Quiet tree-lined road

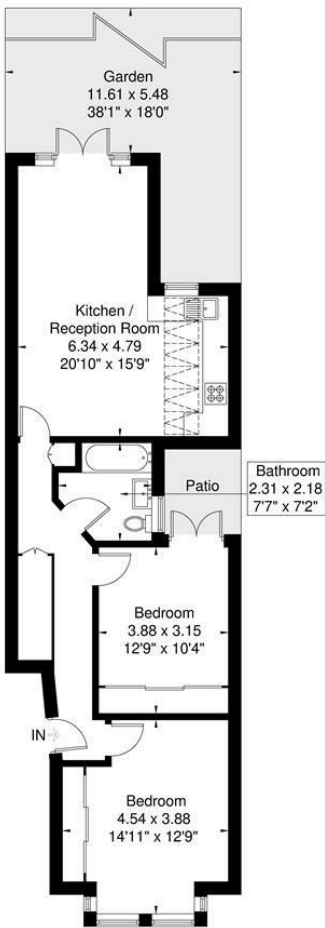
Do Better:

Acton
sales@astonrowe.co.uk

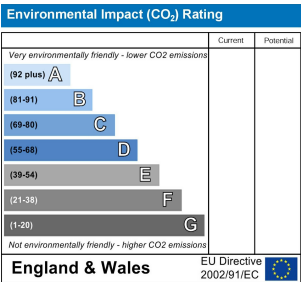
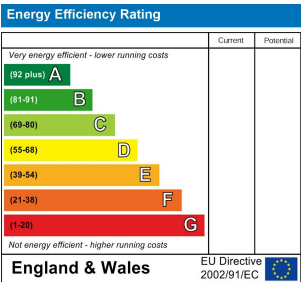
57-59 Churchfield Road,
Acton, London, W3 6AY

020 8992 3600

Birkbeck Grove
Approximate Gross Internal Area = 69.2 sq m / 744 sq ft



Although every attempt has been made to ensure accuracy, all measurements are approximate. The floorplan is for illustrative purposes only and not to scale.
© www.prspective.co.uk



£625,000

Birkbeck Grove, London W3 7QD

- 1 Reception Rooms
- 2 Bedrooms
- 1 Bathrooms



The current owner says:

The property is in a fantastic location for the local shops, schools, parks and transport links.

A well presented two bedroom, ground floor garden flat located on the Acton / Chiswick borders.

The property comprises an open-plan modern eat in kitchen / reception room leading onto a private South-West facing garden.

There are also two double bedrooms with fitted wardrobes and a large family bathroom.

Birkbeck Grove is conveniently situated close to the wonderful green open spaces of Acton Park and Southfield Park while shops, cafes and restaurants can be found on nearby Churchfield Road and Acton High Street.

What's better:

A well presented two bedroom, ground floor garden flat located on the Acton / Chiswick borders.

