

Location:

The commuter has easy access to both A4/M4 direct access to Central London and Heathrow Airport. Chiswick Rail is well connected with Clapham Junction a few stops away.

Key points:

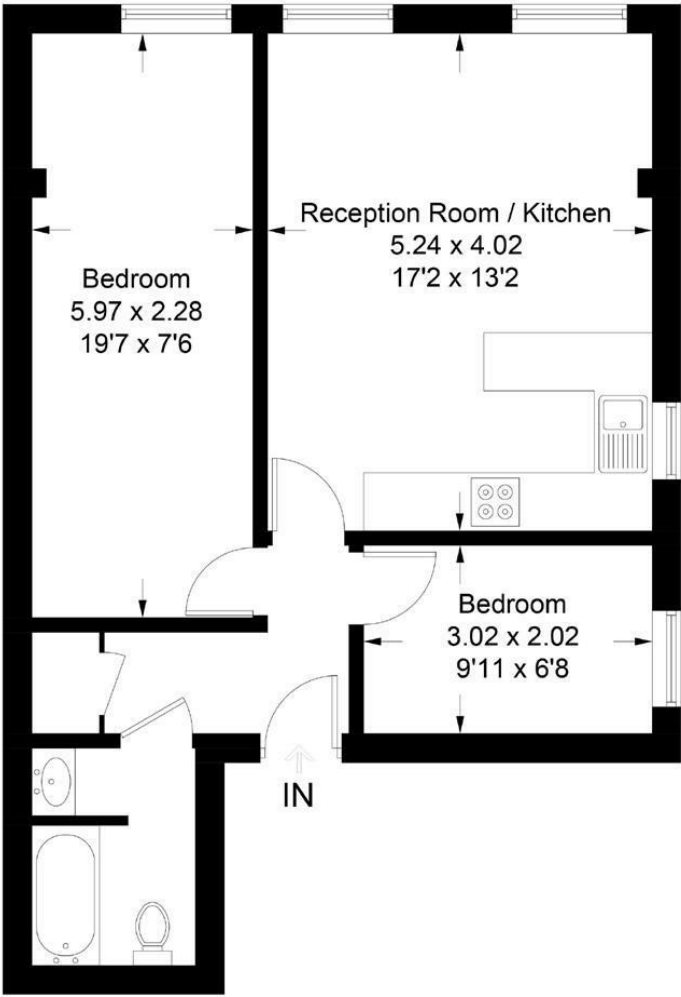
- Close to the river
- Premier road
- Off street parking
- Direct access to a communal garden

Do Better:

Acton  
lettings@astonrowe.co.uk

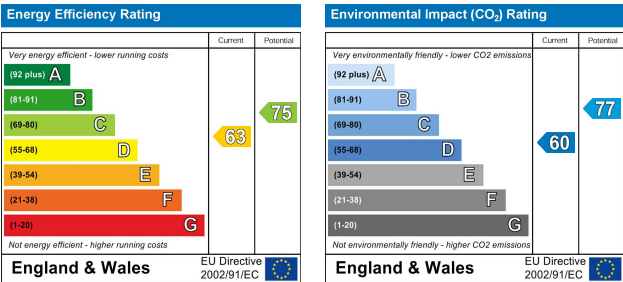
57-59 Churchfield Road,  
Acton, London, W3 6AY

020 8992 3600



Ground Floor

Illustration for identification purposes only, measurements are approximate, not to scale. FloorplansUsketch.com © 2017 (ID392664)



To Let: £2,600 Per Month  
Grove Park Gardens, London W4  
3RY

- 1 Reception Rooms
- 2 Bedrooms
- 1 Bathrooms





Peacefully located in the Grove Park area of Chiswick on a premier road, this fantastic two bedroom ground floor flat offers a stylish and beautifully presented living space within an attractive period conversion. Recently refurbished to a high standard of internal decor, the open plan kitchen has integrated appliances with a breakfast bar, exposed brick wall and real wood floors. The reception room has direct access to a well-manicured communal garden. There are high ceilings throughout the property with one very generous double bedroom and a smaller double or study. Very light and bright flat with double glazing and brand new modern bathroom. The property further benefits from unallocated parking on the driveway for 2 cars. The property is moments from the River Thames and the amenities of Fauconberg Village. A superb range of shops, cafes, boutiques and eateries can be found nearby along with Chiswick rail station at the end of the road and Chiswick House a short walk away.

**The current tenant says:**  
**Chiswick Rail train station is 5 minutes walk away**

**What's better:**  
**Large communal garden**

