

Location:

Grasmere Avenue is a quiet tree-lined road, a short walk from Churchfield Road's many independent shops, cafes and restaurants. Springfield Park, Acton Park and David Lloyd Health Club are a stone's throw away.

Key points:

- Two-bedrooms
- Ground floor
- Private rear garden
- 768 sq.ft / 71.4 sq.m
- Newly refurbished
- Share of freehold

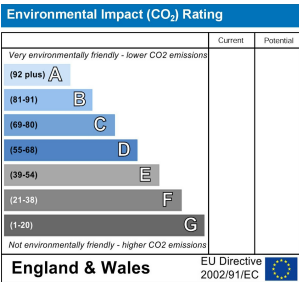
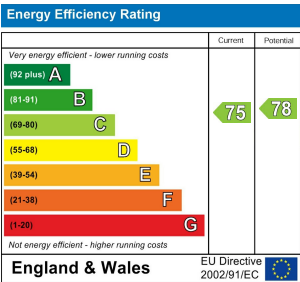
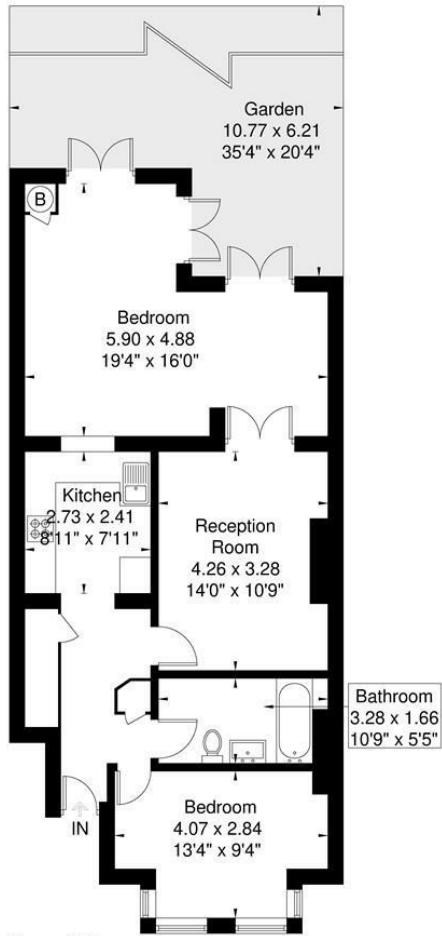
Do Better:

Acton
sales@astonrowe.co.uk

57-59 Churchfield Road,
Acton, London, W3 6AY

020 8992 3600

Grasmere Avenue
Approximate Gross Internal Area = 71.4 sq m / 768 sq ft



£600,000

Grasmere Avenue, London W3 6JU

- 1 Reception Rooms
- 2 Bedrooms
- 1 Bathrooms



The current owner says:

The property is in a fantastic location for the local shops, schools, parks and transport links.

A bright and spacious two-bedroom ground floor garden flat, located on a quiet tree-lined road in Acton.

The property has been recently refurbished and comprises of two bedrooms, one bathroom, living room and separate kitchen.

Other benefits include a share of the freehold and further potential to reconfigure the existing layout and extend (STPP).

Grasmere Avenue is a quiet tree-lined road, a short walk from Churchfield Road's many independent shops, cafes and restaurants. Springfield Park, Acton Park and David Lloyd Health Club are a stone's throw away. The property offers easy access to both the A40 (Western Avenue) and M4 while transport links can be found at Acton Main Line & Elizabeth Line (Crossrail link), Acton Central (London Overground) and Acton Town (District and Piccadilly line). Local schools include Derwentwater, Ark Byron, Ark Priory, St. Vincent's Primary Schools and Twyford Church of England Secondary School.

What's better:

A bright and spacious two-bedroom ground floor garden flat, located on a quiet tree-lined road in Acton.

