

Location:

Moments from Churchfield Road, offering a vibrant cafe culture and a great selection of boutique shops, bars and eateries. The Elizabeth Line is only a 6-minute walk away.

Key points:

- One bedroom
- Ground floor garden flat
- 611 sq.ft / 56.8 sq.m
- Potential to extend (STPP)
- Private rear garden with a summer house/studio
- Share of freehold
- No onward chain

Do Better:

Acton
sales@astonrowe.co.uk

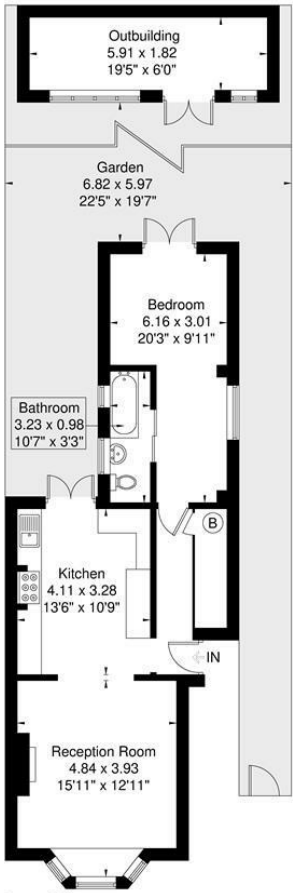
57-59 Churchfield Road,
Acton, London, W3 6AY

020 8992 3600

Aston Rowe



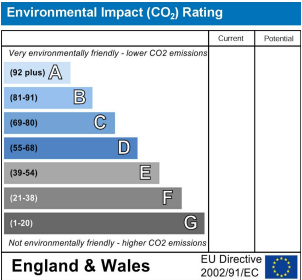
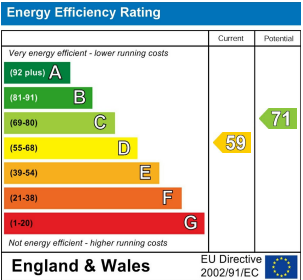
Essex Road
Approximate Gross Internal Area = 56.8 sq m / 611 sq ft
Outbuilding = 10.6 sq m / 114 sq ft
Total = 67.4 sq m / 725 sq ft



Ground Floor
Although every attempt has been made to ensure accuracy, all measurements are approximate.
The floorplan is for illustrative purposes only and not to scale.
© www.perspective.co.uk

£550,000

Essex Road, London W3 9JA



- 1 Reception Rooms
- 1 Bedrooms
- 1 Bathrooms



The current owner says:

The property is in a fantastic location for the local shops, schools, parks and transport links.

A beautifully presented one bedroom, ground floor garden flat, set over 611 sqft, located to Acton Main Line station for the Elizabeth Line.

The property boasts a front reception room with bay window, a modern kitchen, a large double bedroom and bathroom.

The private rear garden can be accessed by both the kitchen and bedroom and benefits from a summer house/WFH office space.

Other benefits include, a share of freehold and potential to extend (STPP).

Moments from Churchfield Road, offering a vibrant cafe culture and a great selection of boutique shops, bars and eateries.

The Elizabeth Line is only a 6-minute walk from Essex Road and the estimated train times from Acton Mainline station are:

- Bond Street - 9 minutes.
- Tottenham Court Road - 13 minutes.
- Liverpool Street - 19 minutes.
- Canary Wharf - 23 minutes.
- Heathrow - Between 18 - 26 minutes.

What's better:

A beautifully presented one bedroom, ground floor garden flat, set over 611 sqft, located to Acton Main Line station for the Elizabeth Line.

