

Location:

Moments from Churchfield Road, offering a vibrant cafe culture and a great selection of boutique shops, bars and eateries. The Elizabeth Line is only a 6-minute walk away.

Key points:

- Three/four bedrooms
- Split-level
- 1,488 sq.ft / 134.6 sq.m
- Fantastic room proportions throughout
- Share of freehold
- No onward chain

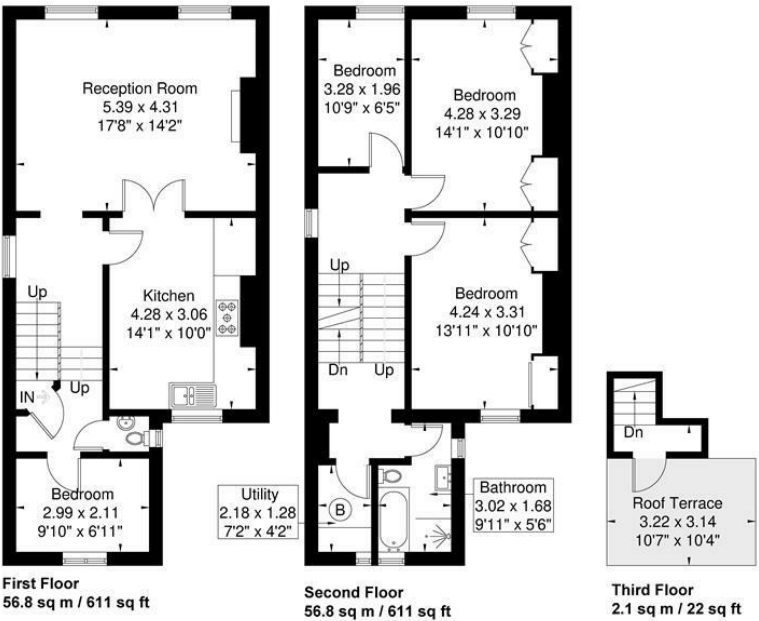
Do Better:

Acton
sales@astonrowe.co.uk

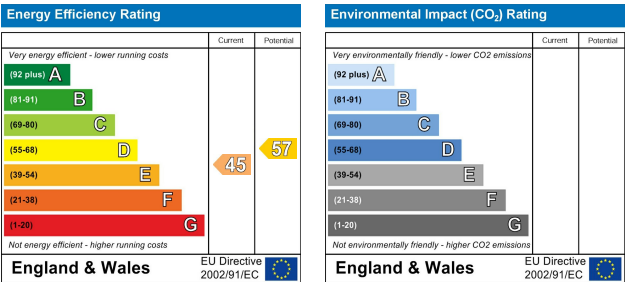
57-59 Churchfield Road,
Acton, London, W3 6AY

020 8992 3600

Essex Road
Approximate Gross Internal Area = 134.6 sq m / 1448 sq ft



Although every attempt has been made to ensure accuracy, all measurements are approximate.
The floorplan is for illustrative purposes only and not to scale.
© www.perspective.co.uk



£750,000

Essex Road, London W3 9JA

- 2 Reception Rooms
- 4 Bedrooms
- 2 Bathrooms



The current owner says:

The property is in a fantastic location for the local shops, schools, parks and transport links.

A bright and spacious three/four bedroom split-level flat, set over 1,448 sqft, located on a quiet tree-lined road in Acton.

The first floor offers a large reception room (17'8x14'2), eat-in-kitchen, w/c and bedroom.

The second floor offers three further bedrooms, utility and family bathroom. There are stairs leading out onto a useable roof terrace.

Please note that the roof terrace is unofficial and not demised to the property

Moments from Churchfield Road, offering a vibrant cafe culture and a great selection of boutique shops, bars and eateries.

The Elizabeth Line is only a 6-minute walk from Essex Road and the estimated train times from Acton Mainline station are:

- Bond Street - 9 minutes.
- Tottenham Court Road - 13 minutes.
- Liverpool Street - 19 minutes.
- Canary Wharf - 23 minutes.
- Heathrow - Between 18 - 26 minute

What's better:

A bright and spacious three/four bedroom split-level flat, set over 1,448 sqft, located on a quiet tree-lined road in Acton.

