

Location:

Moments from the vibrant café culture of Churchfield Road and a great selection of boutique shops, bars and eateries. The property is a 13 minute walk from the new Crossrail station/Elizabeth Line at Acton Mainline Station. Local schools include St Vincent's (RC) Primary, The Japanese School and Twyford (C of E) High.

Key points:

- Four bedrooms
- Three bathrooms (two en-suite)
- Semi-detached
- Off-street parking for two cars
- 100ft+ rear garden
- Further potential to extend (STPP)
- No onward chain
- ***Guide Price: £1,000,000 - £1,100,000***

Do Better:

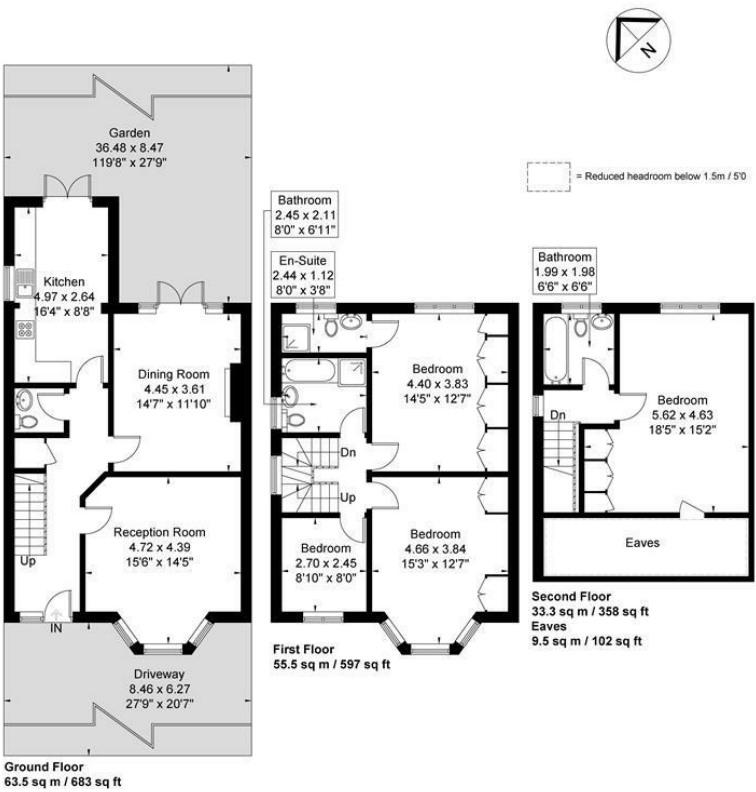
Acton
sales@astonrowe.co.uk

57-59 Churchfield Road,
Acton, London, W3 6AY

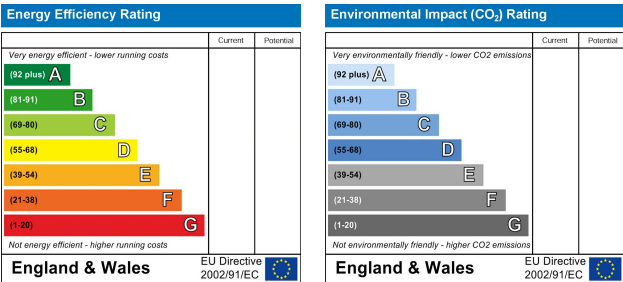
020 8992 3600

Creswick Road

Approximate Gross Internal Area = 152.3 sq m / 1638 sq ft
Eaves / Reduced Headroom = 9.5 sq m / 102 sq ft
Total = 161.8 sq m / 1740 sq ft



Although every attempt has been made to ensure accuracy, all measurements are approximate.
The floorplan is for illustrative purposes only and not to scale.
© www.perspective.co.uk



Aston Rowe



Offers Over £1,000,000

Creswick Road, London W3 9HG

- 2 Reception Rooms
- 4 Bedrooms
- 3 Bathrooms



The current owner says:

The property is in a fantastic location for the local shops, parks, schools and transport links.

A well proportioned four bedroom, semi-detached house in Acton.

The property offers spacious accommodation over three floors and benefits from a 100ft+long rear garden and off-street parking for two cars.

Moments from the vibrant café culture of Churchfield Road and a great selection of boutique shops, bars and eateries. The property is a 13 minute walk from the new Crossrail station/Elizabeth Line at Acton Mainline Station.

Local schools include St Vincent's (RC) Primary, The Japanese School and Twyford (C of E) High.

Please note that the photographs seen are from when the property was previously marketed for let and will be updated in due course

What's better:

A large four bedroom semi-detached home in Acton

