

Location:

Located on a quiet tree-lined road between Acton and Ealing Common, the property is within short walking distance of Acton Mainline (Elizabeth Line), Acton Central (Overground), Ealing Common (Piccadilly and District line) and West Acton tube stations (Central Line).

Key points:

- One bedroom apartment
- Ground floor
- Allocated parking space
- Share of freehold
- Low service charges
- Chain free

Do Better:

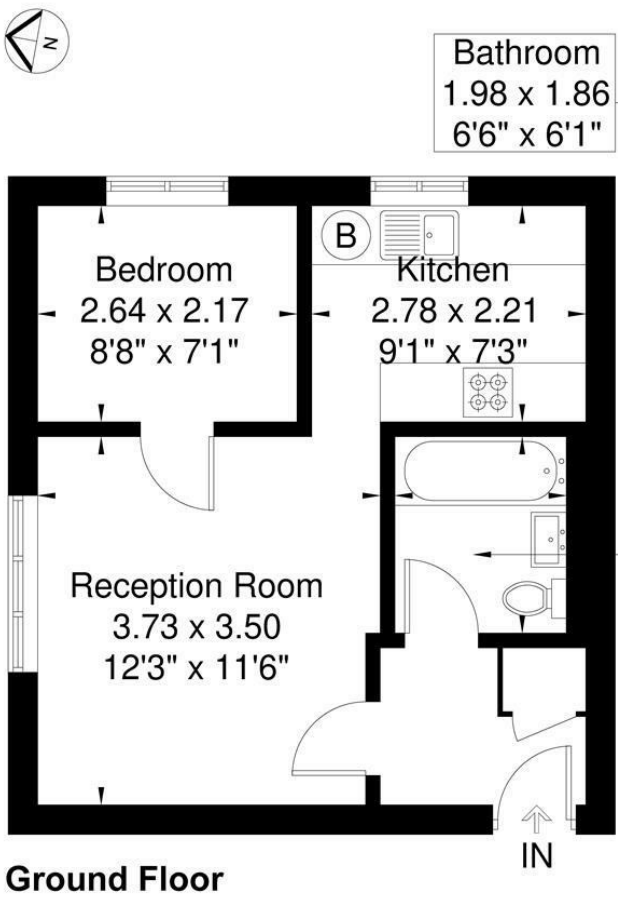
Acton
sales@astonrowe.co.uk

57-59 Churchfield Road,
Acton, London, W3 6AY

020 8992 3600

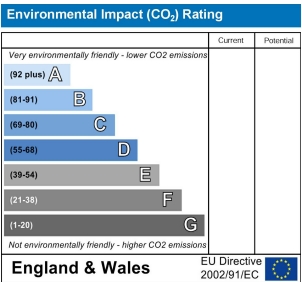
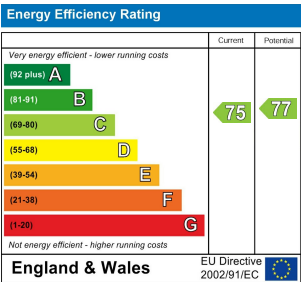
Ardross Court

Approximate Gross Internal Area = 34.1 sq m / 367 sq ft



Although every attempt has been made to ensure accuracy, all measurements are approximate. The floorplan is for illustrative purposes only and not to scale.

© www.perspective.co.uk



Offers Over £250,000

Crefffield Road, London W3 9PX

- 1 Reception Rooms
- 1 Bedrooms
- 1 Bathrooms



The current owner says:

The property is in a fantastic location for the local shops, parks, and transport links.

A newly refurbished one bedroom apartment set within an attractive, well-maintained purpose built development in Acton.

Positioned on the ground floor, the property offers a entrance hallway, newly fitted kitchen, bright and spacious living room, bathroom and bedroom with built in storage.

The property also comes with an allocated parking space and benefits from beautifully maintained communal gardens.

Located on a quiet tree-lined road between Acton and Ealing Common, the property is within short walking distance of Acton Mainline (Elizabeth Line), Acton Central (Overground), Ealing Common (Piccadilly and District line) and West Acton tube stations (Central Line). Access to the A40 trunk road in to central London is very good.

What's better:

A newly refurbished one bedroom apartment set within an attractive, well-maintained purpose built development in Acton.

