

Location:

Ramsay Road is a quiet tree-lined road, moments from the Ofsted outstanding Ark Priory Primary School and within half a mile of both South Acton and Acton Town stations offering excellent access into town.

Key points:

- Five bedrooms
- Two bathrooms
- End-of-terrace
- 1,805 sq.ft / 167.7 sq.m
- West facing patio garden
- Storage shed
- Acton/Chiswick borders
- Ark Priory Academy nearby

Do Better:

Aston Rowe

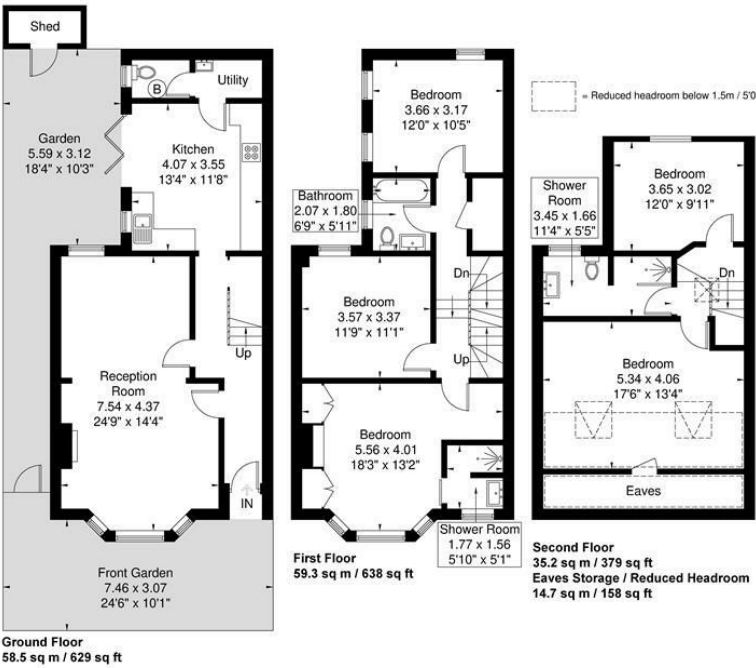
Acton
sales@astonrowe.co.uk

57-59 Churchfield Road,
Acton, London, W3 6AY

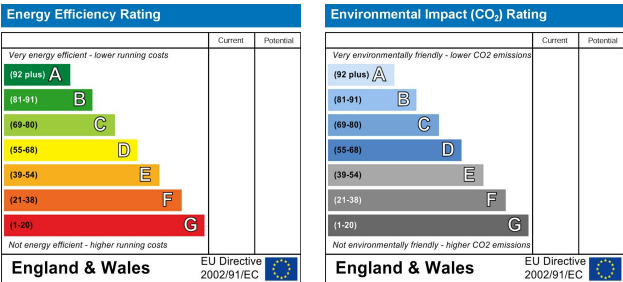
020 8992 3600

Ramsay Road

Approximate Gross Internal Area = 153.0 sq m / 1647 sq ft
Eaves Storage / Reduced Headroom = 14.7 sq m / 158 sq ft
Total = 167.7 sq m / 1805 sq ft



Although every attempt has been made to ensure accuracy, all measurements are approximate.
The floorplan is for illustrative purposes only and not to scale.
© www.perspective.co.uk



Offers Over £1,000,000

Ramsay Road, London W3 8AZ

- 2 Reception Rooms
- 5 Bedrooms
- 2 Bathrooms



The current owner says:

The property is in a fantastic location for the local schools, shops, parks and transport links.

A charming five bedroom family home located on the popular Acton, Chiswick borders.

Upon entry, the entrance hall leads to a beautiful reception/dining room with an abundance of natural light from the bay window. The room boasts fabulous high ceilings and a feature fireplace. At the rear of the property is a w/c , utility and the eat-in-kitchen with doors that open to the west facing patio garden.

On to the first floor, a bedroom looks out on the garden at the rear of the property. The principal bedroom is at the front of the house with a further bedroom adjacent and of a good size. There is a large family bathroom. The second floor houses two further bedrooms and a further sizeable bathroom.

Square Footage: 1,805 sq ft - inc Eaves.

Ramsay Road is situated in South Acton, a quiet residential area on the borders of Chiswick. Acton is also nearby for everyday amenities, and there are wonderful boutique shops, bars and restaurants situated on Churchfield Road.

In terms of travel, Acton town (Piccadilly and District Line) is approximately 0.6 miles away, and the Overground service runs from South Acton Train Station (approximately 0.2 miles) (Richmond 12 minutes).

What's better:

A charming five bedroom family home, circa 1,805 sq.ft, located on the popular Acton, Chiswick borders.

