

Location:

Greenview Close is centrally located close to the amenities of Acton and Shepherd's Bush. Both Acton Central and East Acton stations are close by for links to and from central London.

Key points:

- Two bedrooms
- Two bathrooms (one en-suite)
- Secure underground parking space
- Well maintained purpose built development
- 812 sq.ft
- Overlooking Acton Park
- No onward chain

Do Better:

Acton
sales@astonrowe.co.uk

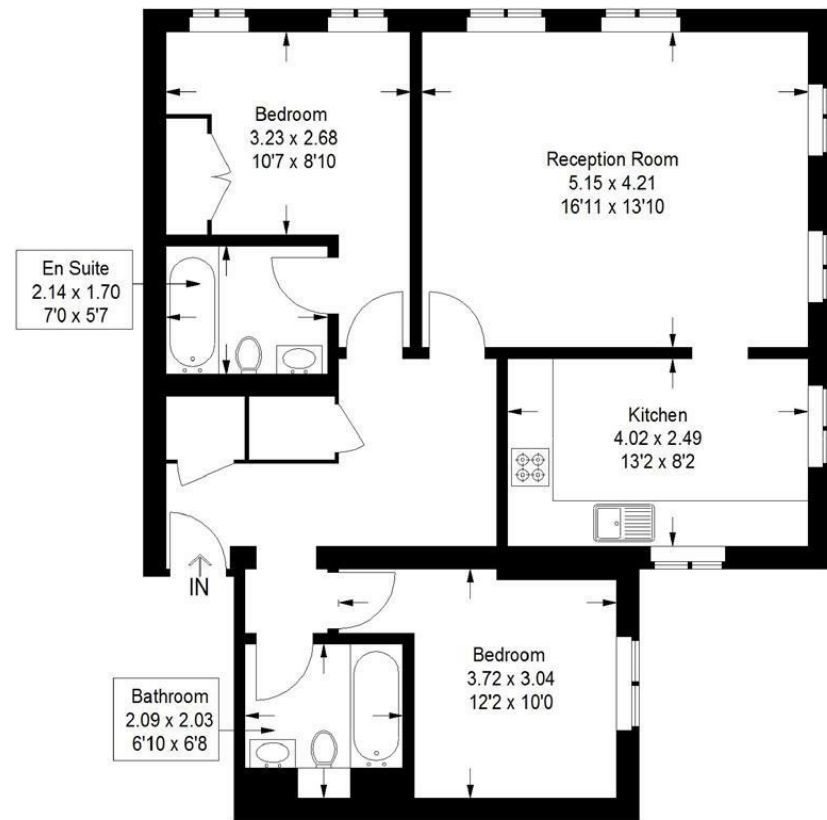
57-59 Churchfield Road,
Acton, London, W3 6AY

020 8992 3600

Aston Rowe



Greenview Close
Approximate Gross Internal Area
75.4 sq m / 812 sq ft



Third Floor
75.4 sq m / 812 sq ft

Illustration for identification purposes only, measurements are approximate, not to scale. floorplansUsketch.com © (ID695264)

Energy Efficiency Rating		Environmental Impact (CO ₂) Rating	
Current	Potential	Current	Potential
76	78	76	78

England & Wales EU Directive 2002/91/EC

£425,000

Greenview Close, London W3 7DZ

- 1 Reception Rooms
- 2 Bedrooms
- 2 Bathrooms

The current owner says:

This property is a few moments walk from the David Lloyd health club, has stunning views over Acton Park and is steeped in local history.

A bright and spacious two bedroom, third floor flat located within a well maintained purpose built development in Acton.

Positioned on the third floor, the property comprises two double bedrooms, two bathrooms, large reception room and separate kitchen.

Further benefits include plenty of storage, off-street parking in the secure gated car park and communal gardens. This property is ideal for a first time buyer or investor and is minutes walk from the overground at Acton Central, walking distance from the Elizabeth Line at Acton Main Line and a short bus journey from the Central and Piccadilly lines at Acton Town, travelling around London could not be easier from Acton. Offered to the market with no onward chain.

Please note that the photographs seen are from when the property was previously marketed for let and will be updated in due course



What's better:

A bright and spacious two bedroom, two bathroom apartment with off-street parking in Acton.

