

Location:

10 Minute walk to Goldhawk Road
and Shepherd's Bush Market
Station

Key points:

- 2 Double bedrooms
- Share of freehold
- 27ft Private garden
- Own front door
- Modern apartment
- Lovely tree lined road
- Opposite Godolphin gardens
- 10 Minute walk to Goldhawk
Road and Shepherd's Bush
Market Station

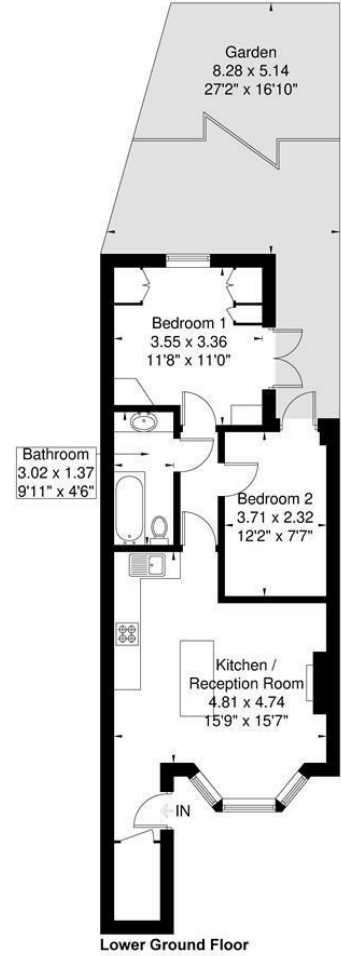
Do
Better:

Acton
sales@astonrowe.co.uk

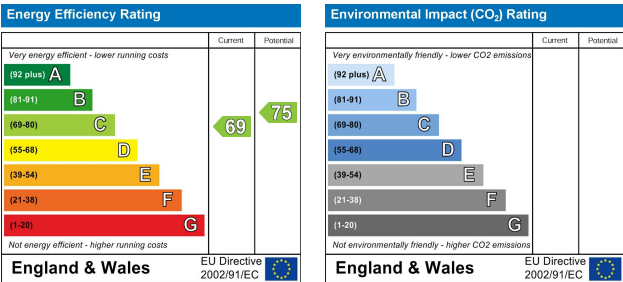
57-59 Churchfield Road,
Acton, London, W3 6AY

020 8992 3600

Godolphin Road
Approximate Gross Internal Area = 53.4 sq m / 574 sq ft



Although every attempt has been made to ensure accuracy, all measurements are approximate.
The floorplan is for illustrative purposes only and not to scale.
© www.prspective.co.uk



Asking Price £575,000

Godolphin Road, London W12 8JF

- 1 Reception Rooms
- 2 Bedrooms
- 1 Bathrooms



The current owner says:

The location of the property is great for transport around London.

A well-presented two bedroom garden apartment located in the heart of Shepherd's Bush set on a wonderful treelined road and situated opposite Godolphin Community Gardens

The property is positioned on the lower ground floor of an attractive period building and comprises of two double bedrooms, open-plan shaker style kitchen/ living room with bay window and modern family bathroom. The apartment benefits from 27 ft landscaped garden perfect for entertaining and al-fresco dining. Further benefits include share of freehold, own front door and great storage throughout.

Godolphin Road is nestled between Goldhawk Road and Uxbridge Road with its selection of local favourites such as The Princess Victoria Pub, Wild Thyme and Bush Hall. There are a number of excellent schools in the area and Godolphin Road is a ten minute walk from Goldhawk Road and Shepherd's Bush Market underground stations. Shepherd's Bush station, with both the Central Line and Overground, is also a short walk with Westfield which offers an amazing array of shops, bars and award-winning restaurants.

What's better:

A wonderful two bedroom garden apartment in W12.

