

Location:

Woodhurst Road is located close to the amenities of Acton and Shepherd's Bush. Both Acton Central and Acton Main Line stations are close by for links to and from central London.

Key points:

- 5 Bedrooms
- Poets Corner
- Walking distance to Elizabeth Line
- Potential to extend S.T.P.P via Ealing Council
- Fantastic family home
- South facing garden
- 2 Bathrooms
- 2,334 sqft

Do Better:

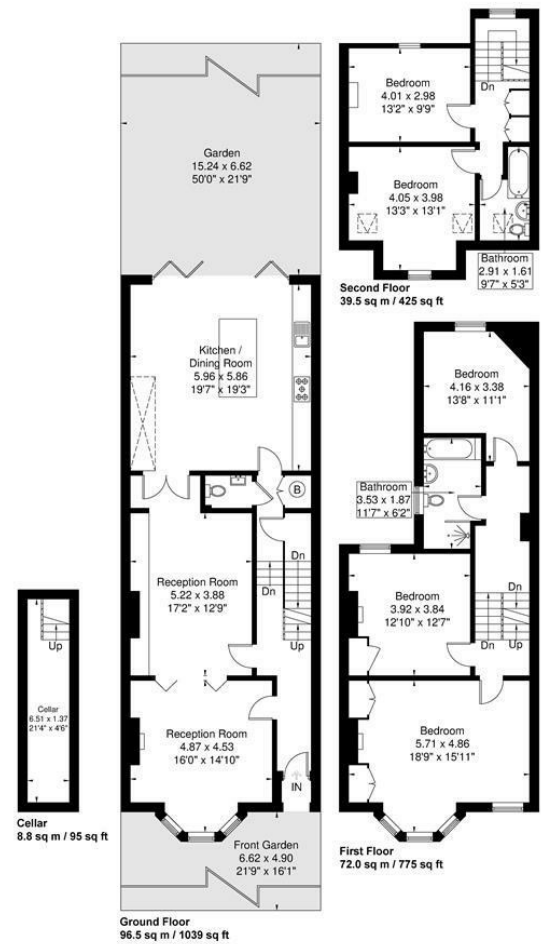
Acton
sales@astonrowe.co.uk

57-59 Churchfield Road,
Acton, London, W3 6AY

020 8992 3600



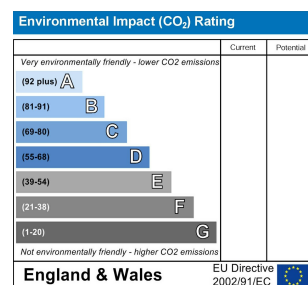
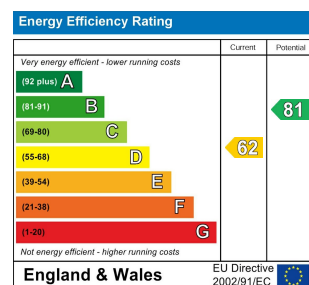
Woodhurst Road
Approximate Gross Internal Area = 216.8 sq m / 2334 sq ft



Although every attempt has been made to ensure accuracy, all measurements are approximate. The floorplan is for illustrative purposes only and not to scale.
© www.perspective.co.uk

Asking Price £1,650,000

Woodhurst Road, London W3 6SS



- 2 Reception Rooms
- 5 Bedrooms
- 2 Bathrooms



SOLD STC - Aston Rowe are proud to present this exceptional five - bedroom family home situated on arguably one of Poets Corners' most desirable roads. Ideal for a large or growing family, this home offers traditional features with a modern finish throughout. The ground floor comprises two attractive reception rooms and open plan modern kitchen/dining area with bi-folding doors leading on to a private 50 ft south-facing landscaped garden. The first floor offers a double bedrooms at the rear, a family bathroom, second bedroom, and a charming master bedroom with an abundance of built-in storage. The second floor comprises two good-sized double bedroom with an extra family bathroom. The property has the potential to extend on the outrigger S.T.P.P via Ealing Council. Moments from Churchfield Road, offering a vibrant cafe culture and a great selection of boutique shops, bars, and eateries.

The current owner says:
A superb family home which offers excellent entertaining space and an opportunity for a growing family.

What's better:
A wonderful 5 bedroom family home in Poets Corner.

