

Location:

Cumberland Park is moments from the vibrant café culture of Churchfield Road which offers a great selection of boutique shops, bars and eateries.

Key points:

- Newly converted apartment
- First floor
- 421 sq ft / 39.2 sq m
- Parking permit available
- Share of freehold

Do Better:

Acton

sales@astonrowe.co.uk

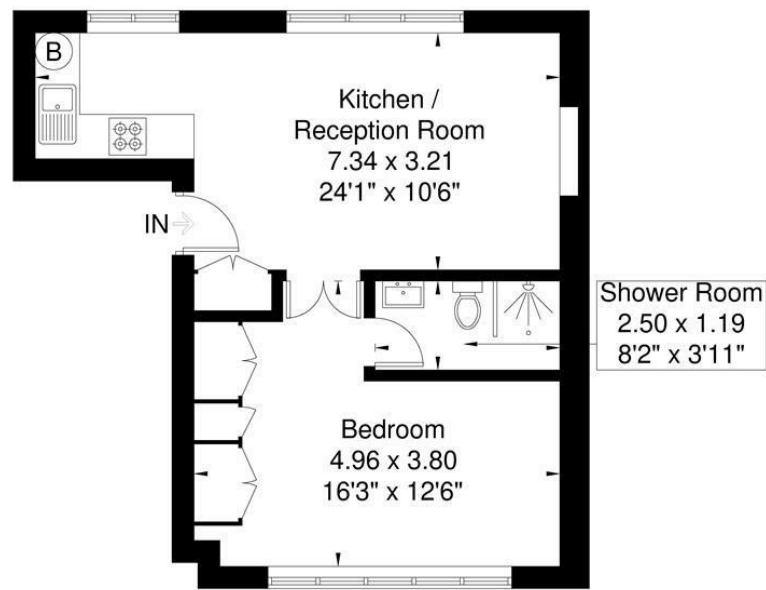
57-59 Churchfield Road,
Acton, London, W3 6AY

020 8992 3600

Aston Rowe



Cumberland Park
Approximate Gross Internal Area = 39.2 sq m / 421 sq ft



First Floor

Although every attempt has been made to ensure accuracy, all measurements are approximate. The floorplan is for illustrative purposes only and not to scale. © www.perspective.co.uk

Energy Efficiency Rating		Environmental Impact (CO ₂) Rating	
Current	Potential	Current	Potential

England & Wales EU Directive 2002/91/EC

£399,000

Cumberland Park, London W3 6SX

- 1 Reception Rooms
- 1 Bedrooms
- 1 Bathrooms



The current owner says:

The property is in a fantastic location for the local shops, parks, schools and transport links.

A bright and spacious one bedroom, first floor apartment located on a quiet tree-lined road in Acton.

Forming part of a new development in an imposing, detached building, this apartment is offered as part of a collection of three recently converted properties.

The apartment benefits from a large bedroom area with built in wardrobes and a good sized shower room. The open-plan kitchen/living area offers a range of modern appliances.

Cumberland park is a much sought after residential tree-lined road that is centrally located for easy access to both Acton Central station (over ground services) and Acton Main Line station for the Elizabeth Line. Moments from the vibrant café culture of Churchfield Road which offers a great selection of boutique shops, bars and eateries.

What's better:

Forming part of a new development in an imposing, detached building, this apartment is offered as part of a collection of three recently converted properties.

