

Location:

Cowper Road is less than 200m from Acton Central Station and a fifteen minute walk to Acton Mainline and the Elizabeth Line. The vibrant café culture of Churchfield Road offers a great selection of boutique shops, bars and eateries.

Key points:

- Semi-detached house
- Two bedrooms
- Poets Corner
- 737 SQ.FT / 68.5 SQ.M
- Chain free

Do Better:

Acton
sales@astonrowe.co.uk

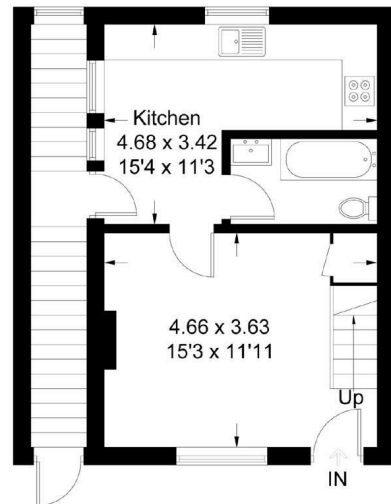
57-59 Churchfield Road,
Acton, London, W3 6AY

020 8992 3600

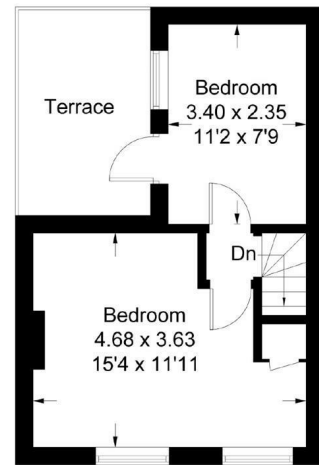


Cowper Road

Approximate Gross Internal Area
68.5 sq m / 737 sq ft

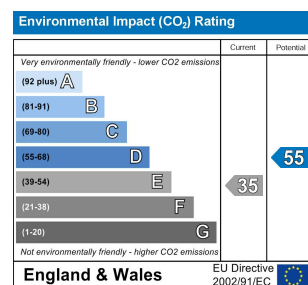
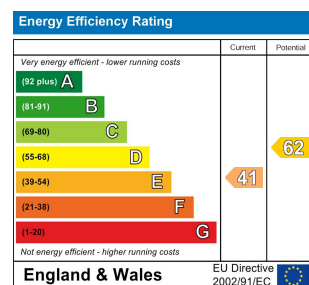


Ground Floor



First Floor

Illustration for identification purposes only, measurements are approximate, not to scale. FloorplansUsketch.com © 2016 (ID254848)



£600,000

Cowper Road, London W3 6PZ

- 1 Reception Rooms
- 2 Bedrooms
- 1 Bathrooms



A charming two bedroom, semi-detached house, located in the heart of Poets Corner, Acton.

The ground floor of the property offers a large front reception room, family bathroom, separate kitchen area and a utility area which runs along the side of the house. The first floor offers two bedrooms and private terrace.

Cowper Road is less than 200m from Acton Central Station and a fifteen minute walk to Acton Mainline and the Elizabeth Line. The vibrant café culture of Churchfield Road offers a great selection of boutique shops, bars and eateries.

Please note that the photographs seen are from when the property was marketed for let

The current owner says:

The property is in a fantastic location for the local shops, parks, schools and transport links.

What's better:

A charming two bedroom, semi-detached house, located in the heart of Poets Corner, Acton.

