

Location:

Berrymead Gardens is ideally located nearby to Acton Town, Acton Central and Acton Mainline Stations for Piccadilly, overground and Elizabeth lines. Acton High Street and Churchfield Road offer a great selection of shops, bars and restaurants.

Key points:

- Two bedrooms
- Second floor flat
- 615 SQ.FT / 57 SQ.M
- Long lease
- Chain free

Do Better:

Acton
sales@astonrowe.co.uk

57-59 Churchfield Road,
Acton, London, W3 6AY

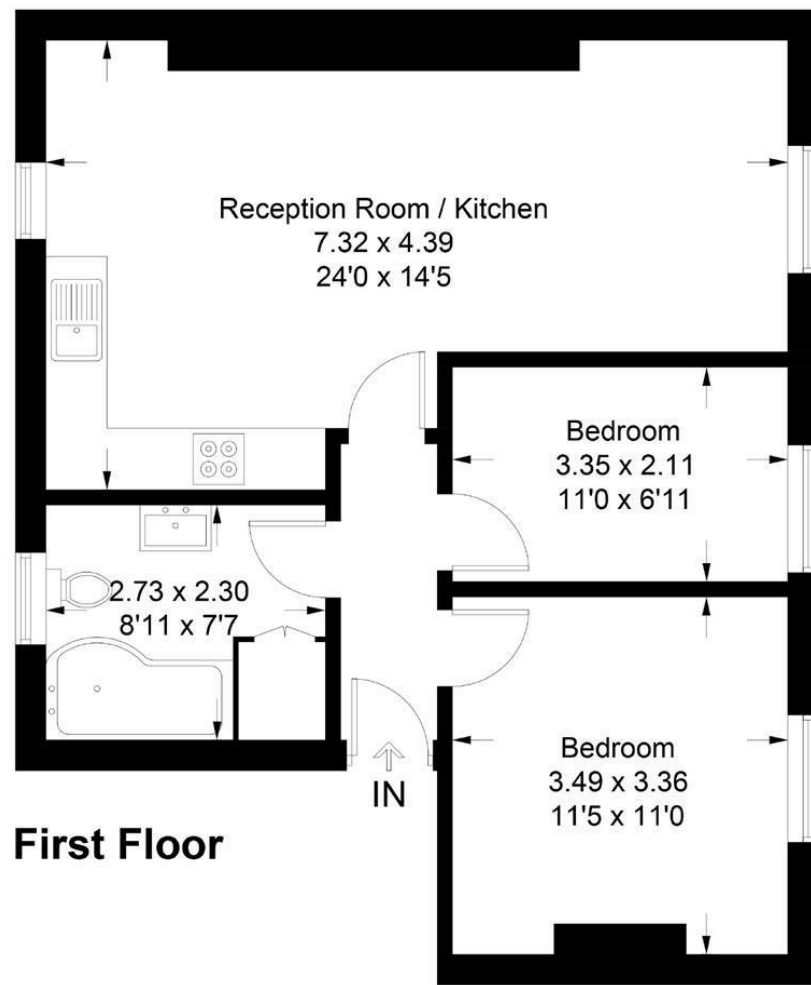
020 8992 3600

Aston Rowe



Berrymead Gardens

Approximate Gross Internal Area = 57.1 sq m / 615 sq ft



First Floor

Illustration for identification purposes only, measurements are approximate, not to scale. floorplansketch.com © (ID554797)

Energy Efficiency Rating		Environmental Impact (CO ₂) Rating	
Current	Potential	Current	Potential
54	54	59	59

Energy Efficiency Rating: A (92+), B (81-91), C (69-80), D (55-68), E (39-54), F (21-38), G (1-20). Current: 54, Potential: 54.

Environmental Impact (CO₂) Rating: A (92+), B (81-91), C (69-80), D (55-68), E (39-54), F (21-38), G (1-20). Current: 59, Potential: 59.

England & Wales EU Directive 2002/91/EC

£385,000

Berrymead Gardens, London W3

SAA

- 1 Reception Rooms
- 2 Bedrooms
- 1 Bathrooms



A bright and spacious two bedroom, second floor apartment in Acton.

The apartment benefits from two bedrooms, one bathroom and an open-plan kitchen/living area, perfect for entertaining.

Situated on a quiet residential road in Acton, the property is moments from Acton High Street and Churchfield Road, offering a great selection of shops, bars and restaurants.

Berrymead Gardens is ideally located nearby to both Acton Town, Acton Central and Acton Mainline Stations for Piccadilly, overground and Elizabeth lines.

Please note that the photographs seen are from when the property was marketed for let

The current owner says:

The property is in a fantastic location for the local shops, schools, parks and transport links.

What's better:

A two bedroom, second floor flat in Acton.

