

Location:

Park Place is in an excellent location, only a short walk to Ealing Broadway and South Ealing tube station and shopping centre, yet only a 7 minute walk to the open spaces on Walpole Park.

Key points:

- Private Gated Development
- 2 Bedroom Freehold House
- EPC Rating C
- Allocated Off Street Parking
- Electric Heating Throughout With Underfloor Heating
- Bosch Integrated Appliances
- Solar Energy Generation
- ICW 10 Year building Warranty
- Bike Storage
- Landscaped Garden

Do Better:

Acton

sales@astonrowe.co.uk

57-59 Churchfield Road,
Acton, London, W3 6AY

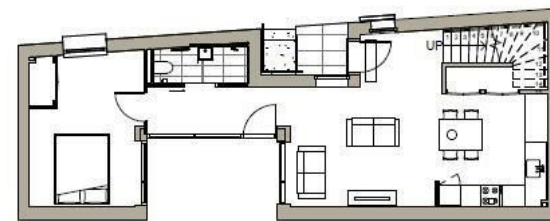
020 8992 3600

Aston Rowe

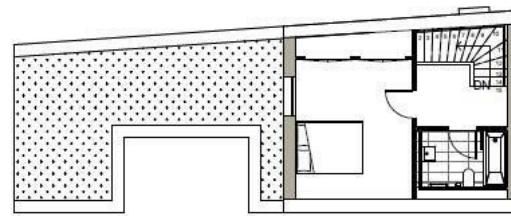


House Two

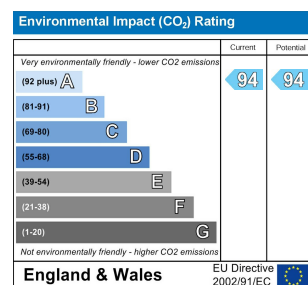
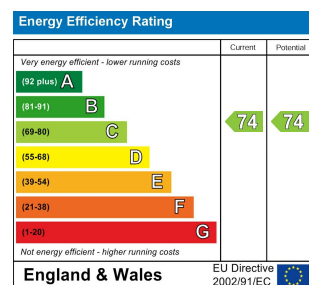
968 sq ft
(excluding terrace)
2 Bedrooms



GROUND FLOOR



FIRST FLOOR



Asking Price £950,000

Park Place, London W5 5NQ

- 1 Reception Rooms
- 2 Bedrooms
- 2 Bathrooms



Aston Rowe are proud to present a two-bedroom newly built house with 10 Year ICW Build Warranty set within an exclusive gated development in a sought-after pocket of Olde Ealing.

This well-designed, airy living space flows into a semi-open kitchen and dining area, which opens directly onto a private south-facing courtyard. The property features two spacious double bedrooms, both equipped with generous built-in storage; one bedroom includes an ensuite shower room. There is also a fully fitted bathroom. Additional highlights include underfloor heating, Bosch integrated appliances, Carrera-style marble worktops, and engineered oak flooring. The property is equipped with wireless alarm and video entry systems, as well as allocated off-street parking and designated areas for bicycles and refuse. Located within a secure gated development, it offers enhanced privacy while being just a 14-minute walk from Ealing Broadway.

The current owner says:

The property is in a private gated development with off street parking and benefits from a 10 year ICW build warranty.

What's better:

A wonderful two bedroom private gated new build home in the heart of Ealing.

