

Location:

Triumph House is a modern, purpose built development, located on Gunnersbury Lane within half a mile of both Acton Town and Ealing Common stations offering excellent access into town. Acton Mainline Station for the Elizabeth Line is also within walking distance.

Key points:

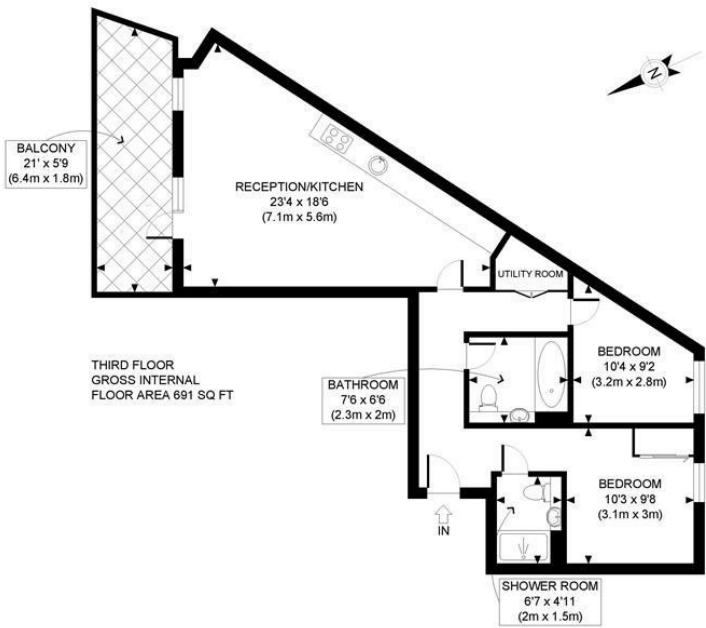
- Two bedrooms
- Two bathrooms (one en-suite)
- Top floor
- Private balcony
- Modern, purpose built development
- Long lease
- No onward chain

Do Better:

Acton
sales@astonrowe.co.uk

57-59 Churchfield Road,
Acton, London, W3 6AY

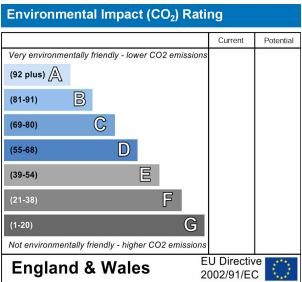
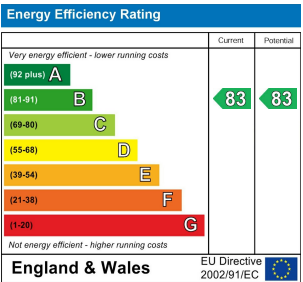
020 8992 3600



APPROX. GROSS INTERNAL FLOOR AREA: 691 SQ FT/ 64 SQM

PROPERTY PHOTO PLANS
ONE STOP SHOP FOR PROPERTY MARKETING

This plan is for illustrative purposes only and should be used as such by any prospective client. Whilst every attempt has been made to ensure the accuracy of the Floor Plan contained here, measurements of the doors, windows, rooms and any other items are approximate and no responsibility is taken for any errors, omissions, or misstatement. The services, systems and appliances shown have not been tested and no guarantee as to the operability or efficiency can be given.



£450,000

Gunnersbury Lane, London W3 8EA

- 1 Reception Rooms
- 2 Bedrooms
- 2 Bathrooms



The current owner says:

The property is in a fantastic location for the local shops, schools, parks and transport links.

A bright and spacious two bedroom, two bathroom apartment set within a modern development in Acton.

The property is set on the top floor and comprises of two bedrooms, two bathrooms (one en-suite), and an open-plan kitchen/living area with doors out to a private 21'x6' balcony.

Other benefits include a long lease and no onward chain.

Triumph House is a modern, purpose built development, located on Gunnersbury Lane within half a mile of both Acton Town and Ealing Common stations offering excellent access into town. Acton Mainline Station for the Elizabeth Line is also within walking distance.

What's better:

A bright and spacious two bedroom, two bathroom apartment set within a modern development in Acton.

