

Location:

Churchfield Road is centrally located close to the amenities of Acton and Shepherd's Bush. Both Acton Central and Acton Main Line stations are close by for links to and from central London.

Key points:

- Available now
- Newly refurbished
- Modern decor throughout
- Heart Of Acton Central

Do Better:

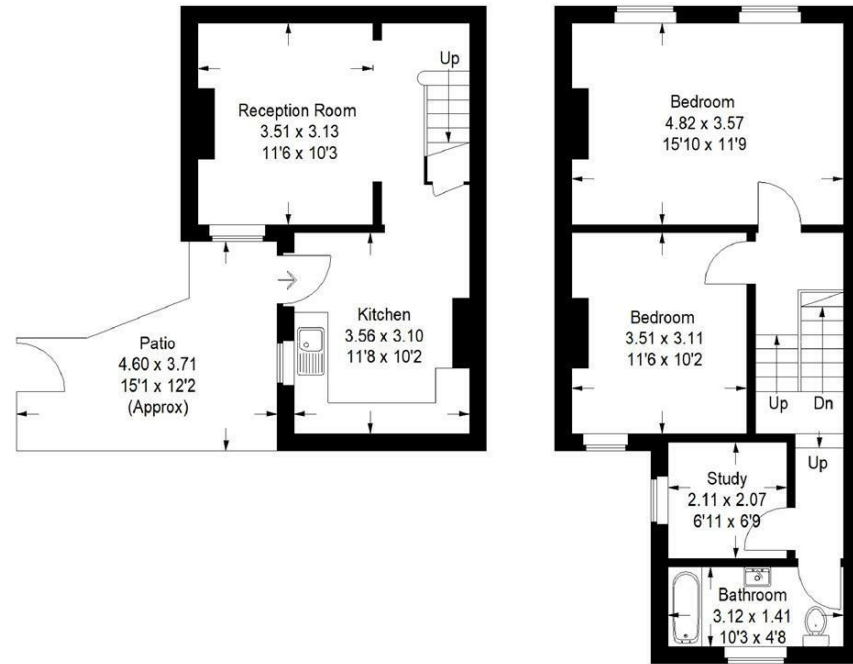
Acton
lettings@astonrowe.co.uk

57-59 Churchfield Road,
Acton, London, W3 6AY

020 8992 3600

Churchfield Road

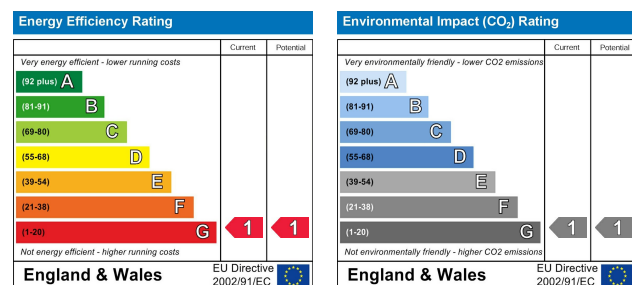
Approximate Gross Internal Area = 75.1 sq m / 808 sq ft
External Area = 12 sq m / 129 sq ft



Ground Floor
28.7 sq m / 309 sq ft

First Floor
46.4 sq m / 499 sq ft

Illustration for identification purposes only, measurements are approximate, not to scale.
FloorplansUsketch.com © 2020 (ID656352)



To Let: £2,400 Per Month

Churchfield Road, London W3 6DH

- 1 Reception Rooms
- 3 Bedrooms
- 1 Bathrooms

The current tenant says:

Aston Rowe are pleased to present this newly refurbished 2 bedroom with office/study/childs bedroom situated in the heart of Acton Central. Ideal for professional sharers or a small family the property consists of a spacious kitchen reception area, 2 double bedrooms and a single sized room on the top floor. Situated in a very convenient location moments from Acton Central station, at the heart of Acton's popular poets corner suburb. Its also well located for access to the A40 and the M4 for road communications.



What's better:

Spacious three bedroom flat in the heart of Poets corner

