

**Location:**

Located moments from the new Acton Main Line Crossrail station, this property is in the heart of Acton and is a short walk to the Central, District & Piccadilly tube lines.

**Key points:**

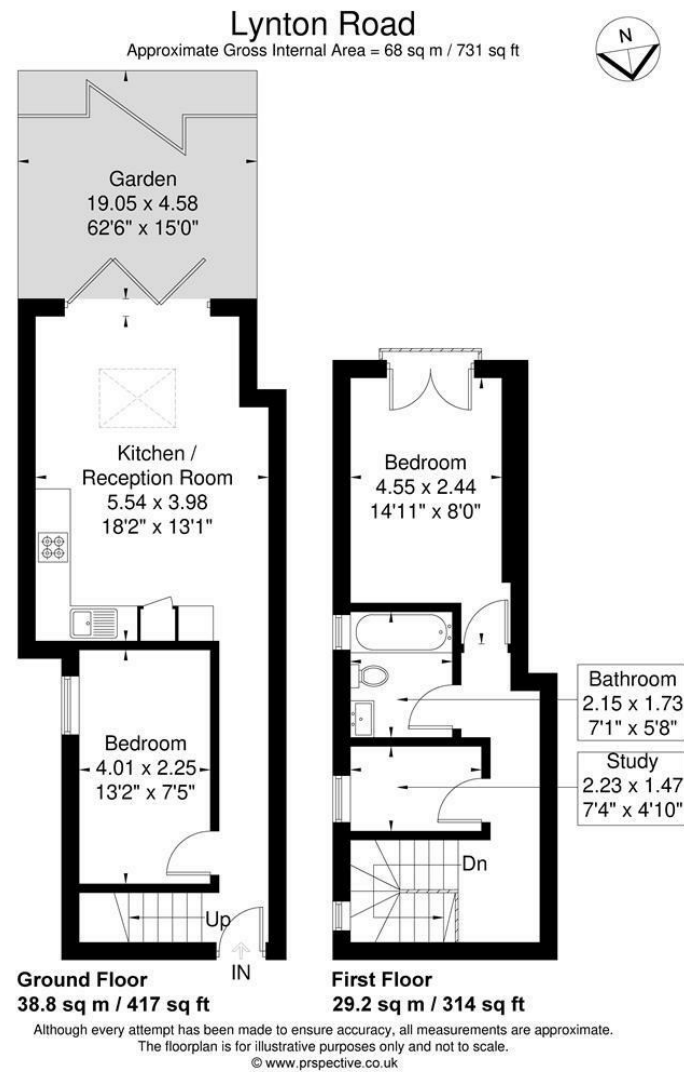
- Newly converted
- 2 Double bedrooms
- 5 minute walk to Acton Mainline
- 62ft South facing garden
- Share of freehold
- Private parking
- Modern apartment throughout
- Split level

# Do Better:

**Acton**  
sales@astonrowe.co.uk

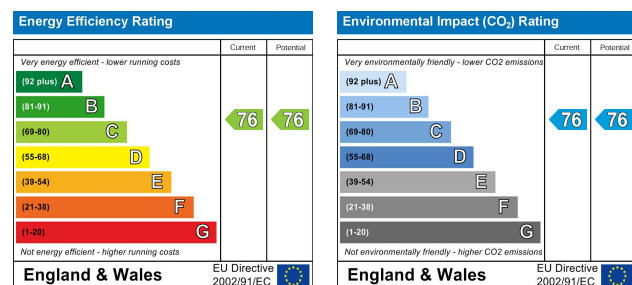
57-59 Churchfield Road,  
Acton, London, W3 6AY

020 8992 3600



**Asking Price £675,000**

**Lynton Road, London W3 9HP**



- 1 Reception Rooms
- 2 Bedrooms
- 1 Bathrooms



The current owner says:

**The property benefits from a share of freehold and off street parking.**

A luxurious two bedroom split level ground floor apartment with a private South facing landscaped garden, situated within a five-minute walk to Acton Mainline station which benefits from the Elizabeth Line. Forming part of a luxury new development in an imposing, semi-detached building, this apartment is offered as part of a collection of four recently converted properties. The apartment benefits from two double bedrooms and open plan kitchen/living area perfect for entertaining. Moments from Churchfield Road, offering a vibrant cafe culture and a great selection of boutique shops, bars and eateries. The apartments are a 5 minute walk from the new Elizabeth Line and a few minutes walk to Churchfield Road, offering a great selection of boutique shops, bars and restaurants.

Lynton Road is located within a 5 minute walk of Acton Main Line and the estimated train times from Acton Mainline station are:

- Bond Street - 9 minutes.
- Tottenham Court Road - 11 minutes.
- Liverpool Street - 16 minutes.
- Stratford Station - 25 minutes.
- Canary Wharf Station - 23 minutes.
- Heathrow - Between 18 minutes - 26 minutes for T2/3/4 and 5.
- Reading Station - 46 minutes.

**What's better:**

**A two bedroom ground floor split level apartment with a 62ft South facing garden.**

