

Location:

Canada Road is a popular residential road just minutes away from Acton Main Line and North Acton tube stations. In addition, the property has excellent access onto the A40, A4 and M4.

Key points:

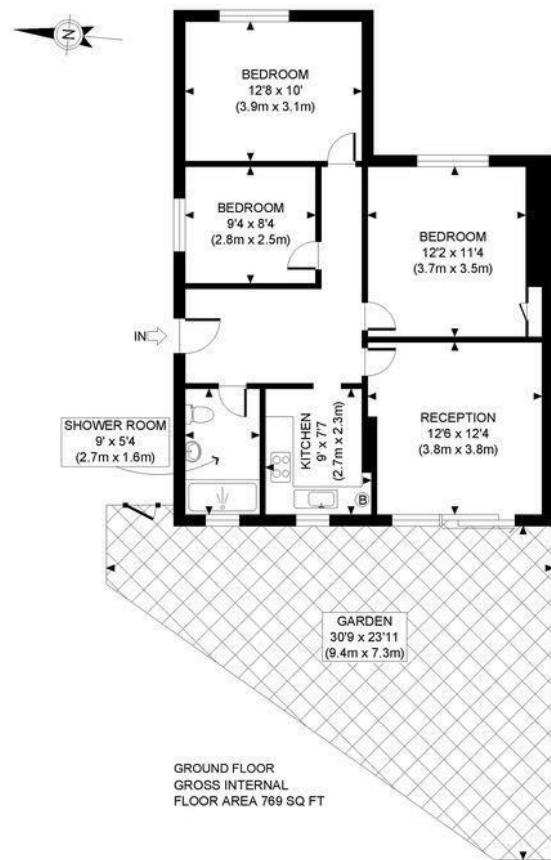
- 3 Double bedrooms
- Own front door
- No onward chain
- Private garden
- 769 sqft
- Walking distance to Elizabeth line

Do Better:

Acton
sales@astonrowe.co.uk

57-59 Churchfield Road,
Acton, London, W3 6AY

020 8992 3600



APPROX. GROSS INTERNAL FLOOR AREA: 769 SQ FT/ 71 SQM

PROPERTY PHOTO PLANS.CO.UK
ONE STOP SHOP FOR PROPERTY MARKETING

This plan is for illustrative purposes only and should be used as such by any prospective client. Whilst every attempt has been made to ensure the accuracy of the Floor Plan contained here, measurements of the doors, windows, rooms and any other items are approximate and no responsibility is taken for any errors, omissions, or misstatement. The services, systems and appliances shown have not been tested and no guarantee as to the operability or efficiency can be given.

Energy Efficiency Rating		Environmental Impact (CO ₂) Rating	
Current	Potential	Current	Potential
64	77		

Energy Efficiency Rating: 64 (Current), 77 (Potential)

Environmental Impact (CO₂) Rating: (Current and Potential ratings are not explicitly shown in the image)



Asking Price £495,000

Canada Road, London W3 0NP

- 1 Reception Rooms
- 3 Bedrooms
- 1 Bathrooms



A bright and spacious three bedroom garden apartment set over 769 sqft and ideal for a first time purchase or buy to let investor. This property boasts a private entrance and a generous reception room. The accommodation further benefits from three double bedrooms, shower room and fully fitted kitchen leading to a private garden. The property is a short walk to the new Elizabeth Line and with easy access to North Acton Underground Station (Central Line Zone 2) and M4,A40/M40 (Western Avenue) into central London and the West. Offered to the market with no onward chain.

The current owner says:

The property benefits from a private garden, three good sized bedrooms and its own front door.

What's better:

A three bedroom garden apartment in W3.

