

Location:

Located in a popular residential area close to the West and North Acton stations (Central) and Acton Main Line. A40 and A406 are nearby for easy access in and out of London.

Key points:

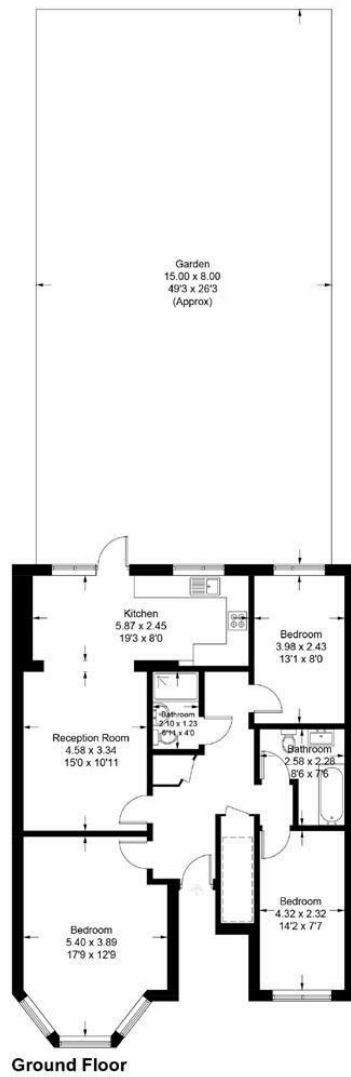
- Newly Refurbished
- Three Double Bedrooms
- Two Bathrooms
- Private Garden
- Modern Finish
- Off street parking

Do Better:

Acton
lettings@astonrowe.co.uk

57-59 Churchfield Road,
Acton, London, W3 6AY

020 8992 3600



Cecil Road
 Approximate Gross Internal Area
 91.7 sq m / 987 sq ft
 (Excluding Reduce Headroom)
 Approximate Gross External Area
 120 sq m / 1292 sq ft

= Reduced headroom below 1.5m / 5'0"

Illustration for identification purposes only, measurements are approximate, not to scale. floorplansUsketch.com © (ID637591)

Energy Efficiency Rating		Environmental Impact (CO ₂) Rating			
	Current	Potential		Current	Potential
Very energy efficient - lower running costs					
(92 plus) A			Very environmentally friendly - lower CO ₂ emissions		
(81-91) B			(92 plus) A		
(69-80) C			(81-91) B		
(55-68) D			(69-80) C		
(39-54) E			(55-68) D		
(21-38) F			(39-54) E		
(1-20) G			(21-38) F		
Not energy efficient - higher running costs					
Not environmentally friendly - higher CO ₂ emissions					
England & Wales		EU Directive 2002/91/EC		England & Wales	
				EU Directive 2002/91/EC	

To Let: £3,000 Per Month
Cecil Road, London W3 0DA

- 1 Reception Rooms
- 3 Bedrooms
- 2 Bathrooms



We are pleased to present this stunning three double bedroom apartment set in a popular location opposite the North Acton Playing Fields. This ground floor apartment has been finished to an extremely high standard and benefits from a modern open plan kitchen/reception room with direct access on to a private garden. The kitchen boasts a range of brand new appliances and the layout is perfect for entertaining. There are three double bedrooms as well as two bathrooms on offer perfect for a family or professional sharers. The flat also benefits from off street parking for one car.

The current tenant says:

The property is just moments away from North Acton station and Acton Mainline station which will be the cross link to central London.

What's better:

A gorgeous three double bedroom apartment in Acton.

