

**Location:**

The property is in a fantastic location for the local shops, parks, schools and transport links.

**Key points:**

- End terraced home
- 4 Bedrooms
- 2 Bathrooms
- Poets Corner
- Family House
- Finished off to an exceptionally high standard

# Do Better:

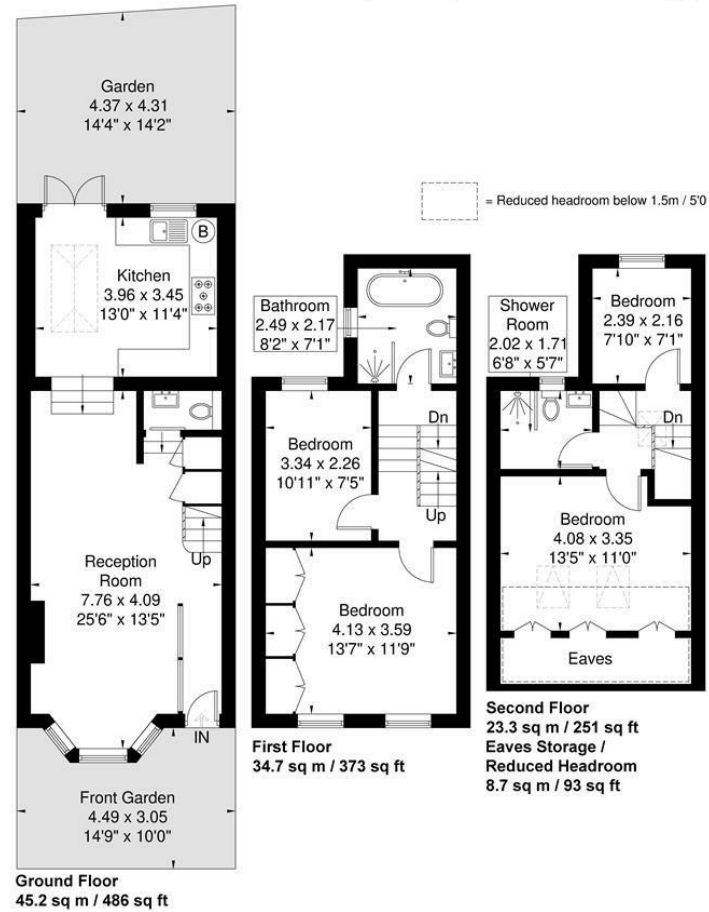
**Acton**  
sales@astonrowe.co.uk

103 Churchfield Road,  
Acton, London, W3 6AH

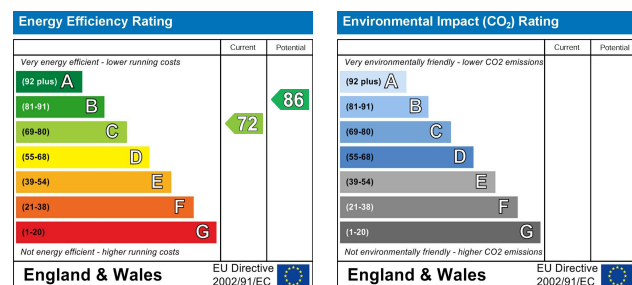
020 8992 3600

## Myrtle Road

Approximate Gross Internal Area = 103.2 sq m / 1112 sq ft  
Eaves Storage / Reduced Headroom = 8.7 sq m / 93 sq ft  
Total = 111.9 sq m / 1205 sq ft



Although every attempt has been made to ensure accuracy, all measurements are approximate. The floorplan is for illustrative purposes only and not to scale.  
© www.perspective.co.uk



**Asking Price £1,200,000**

**Myrtle Road, London W3 6EA**

- 2 Reception Rooms
- 4 Bedrooms
- 2 Bathrooms



Aston Rowe are proud to present this beautifully presented four bedroom end terraced house in one of Acton's most desirable roads in Poets Corner. Finished off to an exceptionally high standard this fabulous property is contemporary and modern throughout, and is set over three floors. The accommodation includes an impressive double reception room with herringbone flooring throughout with steps leading down to an open plan kitchen/dining area with underfloor heating, which looks out on to a well designed and landscaped garden with great storage and perfect for Al-fresco dining. This impressive home benefits from four bedrooms, two beautifully designed bathrooms and a downstairs WC. Myrtle Road is moments walk from Churchfield Road, offering a vibrant cafe culture and a great selection of boutique shops, bars and eateries. Transport links include Acton Central Overground and Acton Mainline Station for the new Elizabeth line.

## The current owner says:

Myrtle Road is moments walk from the amenities of Churchfield Road while also being within short walking distance of both Acton Central and Acton Mainline Stations for Overground and Elizabeth lines.

## What's better:

Being within walking distance to Churchfield Road and offering a vibrant cafe culture.

