

**Location:**

Goldsmith Avenue is a quiet residential road located close to the amenities of Acton and Shepherd's Bush. Both Acton Central and Acton Main Line stations are within walking distance.

**Key points:**

- 5 Bedrooms
- Poets Corner
- Family home
- Victorian style tiled entrance
- Potential to extend to rear S..T.P.P
- Potential to extend to loft space S..T.P.P

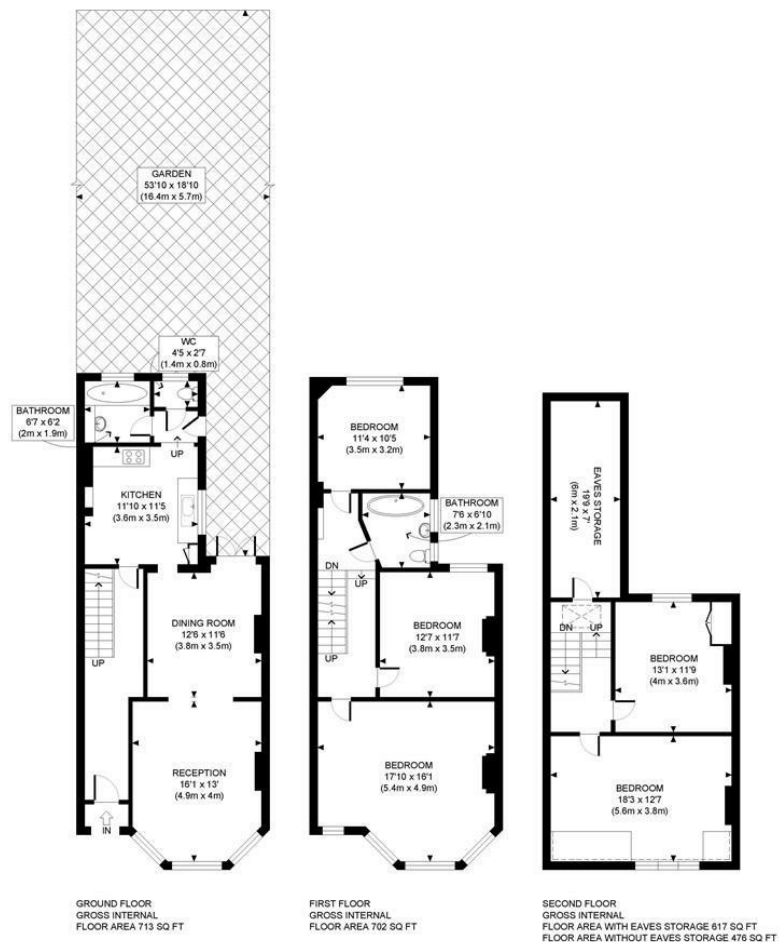
# Do Better:

**Acton**  
sales@astonrowe.co.uk

103 Churchfield Road,  
Acton, London, W3 6AH

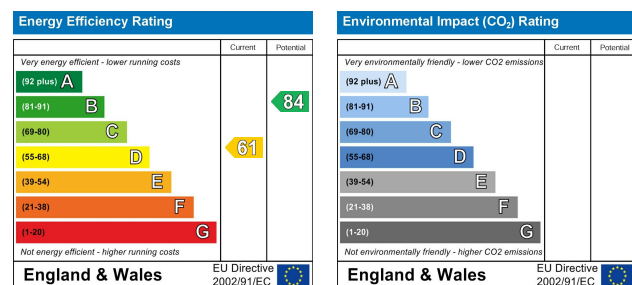
020 8992 3600

# Aston Rowe



**PROPERTY PHOTO PLANS**.CO.UK  
ONE STOP SHOP FOR PROPERTY MARKETING

This plan is for illustrative purposes only and should be used as such by any prospective client. Whilst every attempt has been made to ensure the accuracy of the Floor Plan contained here, measurements of the doors, windows, rooms and any other items are approximate and no responsibility is taken for any errors, omissions, or misstatement. The services, systems and appliances shown have not been tested and no guarantee as to the operability or efficiency can be given.



## Offers In Excess Of £1,400,000

## Goldsmith Avenue, Acton W3 6HW

- 2 Reception Rooms
- 5 Bedrooms
- 2 Bathrooms



A beautifully presented five bedroom terraced period house, situated on one of Actons premier residential roads in Poets Corner. This family home offers over 1,891 sqft of accommodation and comprises two large reception rooms with a working fireplaces, high ceilings, period features and a downstairs bathroom. A modern spacious kitchen with doors leading out to the mature rear garden. The first floor homes the family bathroom with a C.P. Hart roll top bath, two double bedrooms and master bedroom to the front with a lovely bay window. The second floor accommodates two further double bedrooms and considerable eaves space. Moments from the vibrant café culture of Churchfield Road and a great selection of boutique shops, bars and eateries.

The current owner says:

**A superb period property which offers excellent entertaining space and an opportunity for a growing family.**

**What's better:**

**A lovely 5 bedroom terraced family home in Poets Corner, W3.**

