



Newington Causeway, SE1

£399,950



- Beautifully Presented
- Concierge
- Gated Development
- Lots Of Natural Light
- On-Site Leisure Facilities
- Central Location





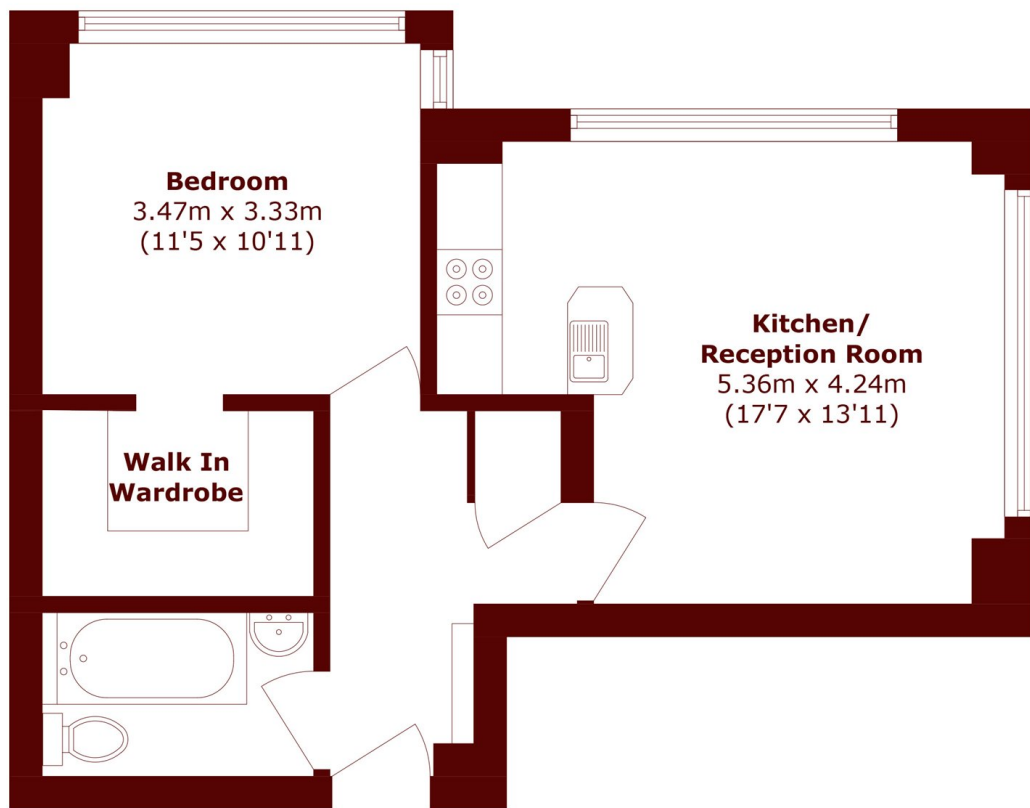
ABOUT THE PROPERTY

A beautifully presented one bedroom apartment set within this popular gated development. The property features a bright dual aspect open plan kitchen/ reception room, enhanced by high ceilings and large windows that flood the space with natural light, creating an airy and welcoming feel. The spacious double bedroom is equally impressive, benefiting from floor to ceiling windows and a generous walk-in wardrobe. The apartment is completed by a modern bathroom and offers well proportioned living space throughout.

Residents of Metro Central Heights benefit from an impressive range of on site amenities, including a fully equipped gym, swimming pool, steam room, and Jacuzzi, as well as the 24-hour concierge service.

This property is just moments from Elephant & Castle stations (Bakerloo and Northern lines), offering superb access across London. The area has seen major regeneration, with Elephant Park featuring new restaurants, cafés, green spaces, and a soon to open shopping centre. Elephant & Castle Underground is only 200m away, with the Overground around 350m. Frequent buses serve the City and West End, while Borough Market and London Bridge are within walking distance.





Total area (approx.): 46.8 sq. m (503.8 sq. ft)

Marsh & Parsons Kennington

295 Kennington Road,
London, SE11 4QE
020 7587 1533