



Lambeth Walk, SE11

£550,000



- Four Bedrooms
- Ground Floor
- Chain Free
- Balcony
- Excellent Location
- Communal Gardens



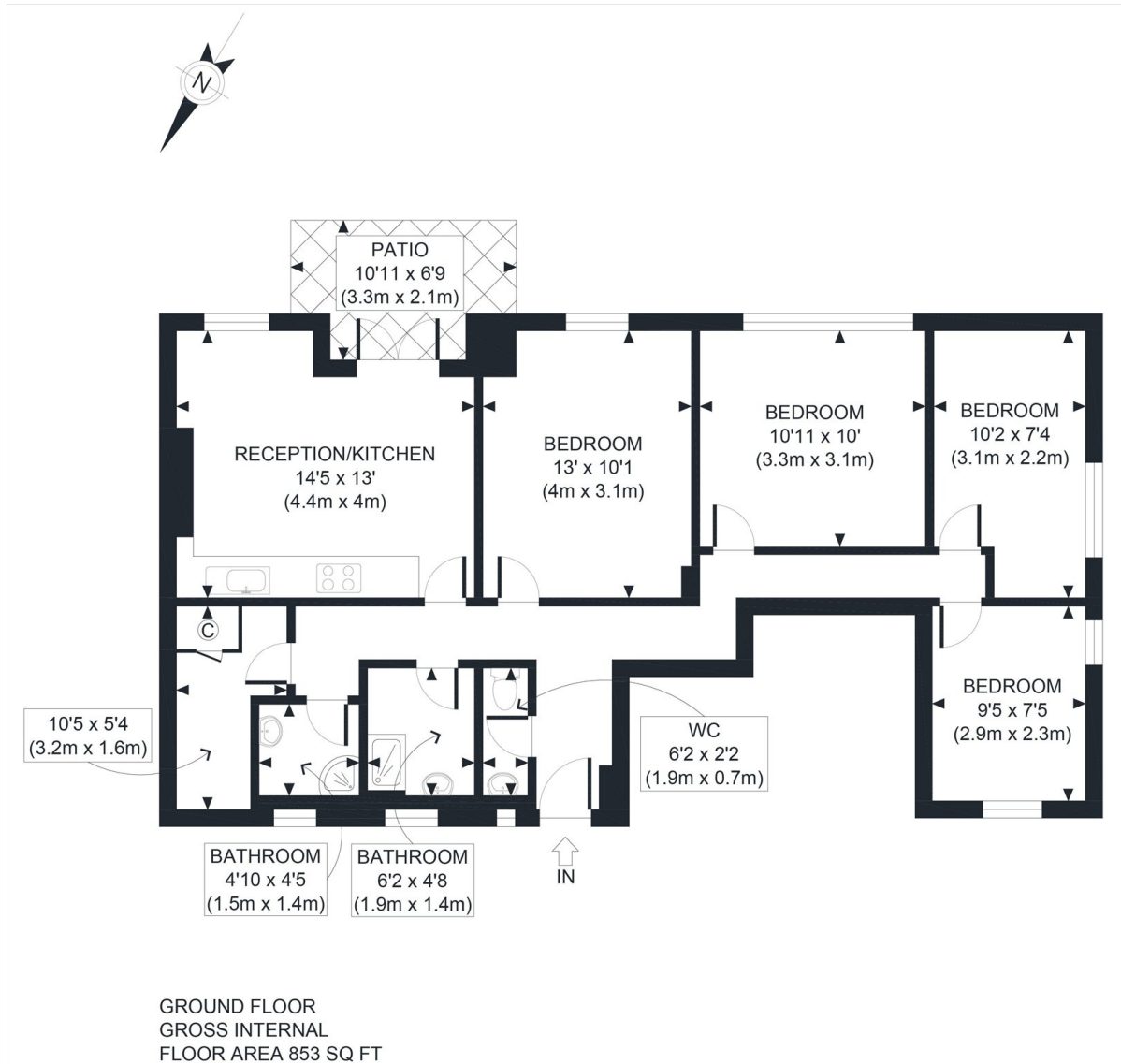


ABOUT THE PROPERTY

Set within a well-maintained block on Lambeth Walk, in the highly sought after China Walk Estate, this spacious apartment is presented in excellent condition throughout. The property features a bright open plan reception room with direct access to a private balcony overlooking the communal gardens. Accommodation comprises four well-proportioned bedrooms, two modern shower rooms, and a separate utility room.

Ideally located moments from Lambeth North Underground Station, Lambeth Bridge, and London's vibrant South Bank, the area offers an exceptional selection of bars, restaurants, and cultural attractions. Lambeth North Underground Station and a wide selection of bus routes within easy reach provide convenient access across the capital. In addition, a wide range of local amenities, shops, cafés, and restaurants are nearby, while the South Bank, Westminster, and the River Thames are all within close proximity.





APPROX. GROSS INTERNAL FLOOR AREA 853 SQ FT / 79 SQM

Ref:

Copyright **photoplan**

Disclaimer: Floor plan measurements are approximate and are for illustrative purposes only. While we do not doubt the floor plan accuracy and completeness, you or your advisors should conduct a careful, independent investigation of the property in respect of monetary valuation

Marsh & Parsons Kennington

295 Kennington Road,
London, SE11 4QE
020 7587 1533